

Why SKF?

Bushings and hubs



Since most power transmission products are fitted to the shaft via keyway and with interference fit to ensure minimal shaft wear, the adoption of a bush system to provide fast interchange was designed many years ago to allow ease of machining and use. The use of shaft fixing and hubs to help them be installed is now common and the SKF range of shaft fixings are based on current global standards.

The taper lock system is employed in the majority of pulleys, sprockets and couplings, and has also a range of shaft adapter hubs to fit to such items as fan blades and conveyor drums. The QD series is predominantly aimed at the North and Latin American markets, but SKF covers this range for global supply in inch and metric size shafts, the latter being a standard range fitted to narrow wedge pulleys.

Keyless bushings are also being offered. With 16 different types available in the range, there is a wide opportunity to select and fit a keyless bush to further offer a reduction in machining costs and promote a less stressed shaft.

Product features

- Taper bushes are designed for quick and easy installation and removal with basic tools, resulting in minimum downtime each time they are fitted
- The wide range of metric and imperial bore sizes 9–290 mm (C/h–12 in) available offers you off-the-shelf availability and eliminates the need for time consuming machining of products
- Each bush has a number of different bore sizes which translates to a reduction in the number of components that have to be held in stock therefore reducing inventory costs
- The taper bush is designed to accommodate under or oversize shafts allowing for a powerful grip even on worn shafts

User benefits

- Enhance worker safety
- Improve hygiene
- Improve product quality
- Improve reliability
- Increase production
- Reduce downtime
- Reduce energy consumption
- Reduce maintenance costs
- Reduce need for maintenance
- Reduce operating costs
- Reduce waste
- Shorten delivery times

Common applications

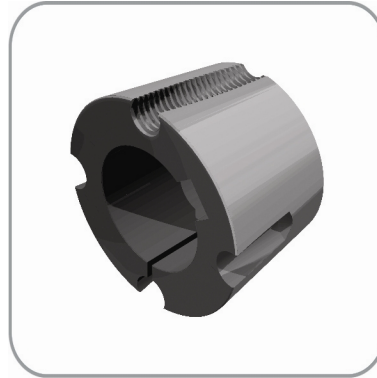
- Conveyors
- Crushers
- Debarking drums
- Drills
- Elevators
- Fans
- Horizontal mills
- Motors
- Pumps
- Screens

Keyless bushings



- Designed to create an interference fit with uniform pressure distribution
- Zero backlash installation, suffering from none of the problems associated with keyways and splines
- Complete axial and radial adjustability, simple installation and removal
- Generous machining tolerances along with as turned surface finishes equals considerably lower costs

Taper bushings



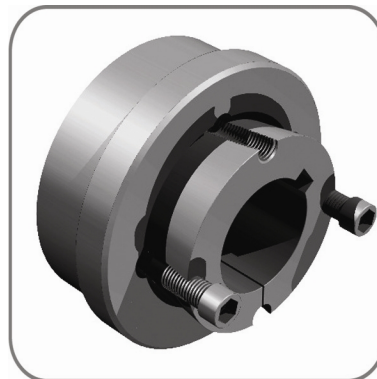
- Accommodate under or oversize shafts allowing for a powerful grip even on worn shafts
- Designed for quick and easy installation and removal with basic tools, resulting in minimum downtime
- Wide range of available bore sizes (9-290 mm and 3/8-12 in) eliminates needs for machining

Bolt-on hubs



- Provide a convenient means of securing devices that must be fastened firmly to shafts
- Designed for use with the taper bushings

Weld-on hubs



- Very useful for welding into devices that must be fastened firmly to shafts
- Made of steel, drilled, tapped and taper bored to receive taper bushings

© SKF is a registered trademark of the SKF Group.

© SKF Group 2009

The contents of this publication are the copyright of the publisher and may not be reproduced (even extracts) unless permission is granted. Every care has been taken to ensure the accuracy of the information contained in this publication but no liability can be accepted for any loss or damage whether direct, indirect or consequential arising out of the use of the information contained herein.

August 2009

skf.com

