

QD Pulleys and Bushings





Contents

6-9	QD Bushings and hubs
10-20	Classical V-belt pulleys (QD bushed)
21-31	Narrow wedge belt pulleys (QD bushed)

The SKF® brand now stands for more than ever before, and means more to you as a valued customer.

While SKF maintains its leadership as the hallmark of quality bearings throughout the world, new dimensions in technical advances, product support and services have evolved SKF into a truly solutions-oriented supplier, creating greater value for customers.

These solutions encompass ways to bring greater productivity to customers, not only with breakthrough application-specific products, but also through leading-edge design simulation tools and consultancy services, plant asset efficiency maintenance programmes, and the industry's most advanced supply management techniques.

The SKF brand still stands for the very best in rolling bearings, but it now stands for much more.

SKF – the knowledge engineering company

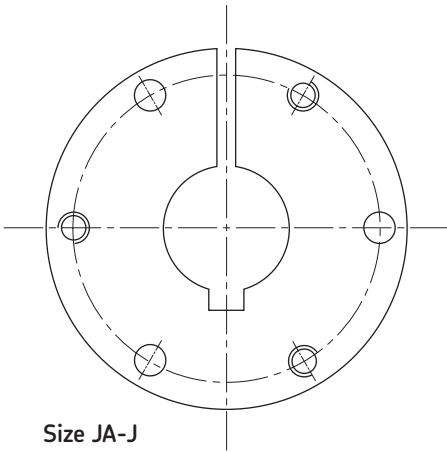
www.skfptp.com

QD Bushings and Hubs

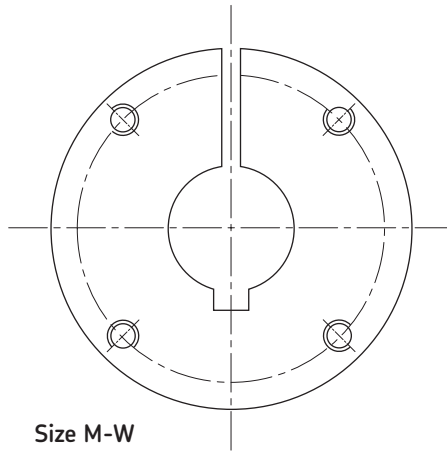




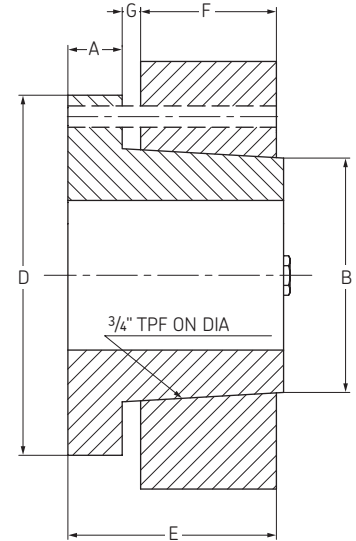
QD Bushings



Size JA-J



Size M-W



Bushing ID	Bore range for:				A	B	D	E	F	G	Set screw size	Average weight		Designation
	min	max		kg								lbs		
		Std key way	Shallow key way											
JA	3/8	1	1-1/4	0,31	1,38	2,00	1,00	0,56	0,12	10-24	0,4	0,9	PHF JA-...	
SH	1/2	1-3/8	1-11/16	0,43	1,88	2,63	1,31	0,81	0,12	1/4	0,5	1	PHF SH-...	
SDS	1/2	1-11/16	2	0,43	2,18	3,18	1,31	0,75	0,12	1/4	0,5	1	PHF SDS-...	
SD	1/2	1-11/16	1-15/16	0,43	2,18	3,18	1,81	1,25	0,12	1/4	0,7	1,5	PHF SD-...	
SK	1/2	2-1/8	2-1/2	0,56	2,81	3,88	1,93	1,25	0,22	5/16	0,9	2	PHF SK-...	
SF	1/2	2-5/16	2-13/16	0,63	3,13	4,63	2,06	1,25	0,22	5/16	1,4	3	PHF SF-...	
E	7/8	2-7/8	3-1/2	0,88	3,83	6,00	2,75	1,63	0,25	3/8	4,5	10	PHF E-...	
F	1	3-5/16	3-15/16	1,00	4,43	6,63	3,75	2,50	0,34	1/2	5,2	11,5	PHF F-...	
J	1-7/16	3-3/4	4-1/2	1,13	5,14	7,25	4,63	3,18	0,38	5/8	8,2	18	PHF J-...	
M	2-15/16	4-3/4	5-1/2	1,25	6,50	9,00	6,75	5,18	0,41	3/4	16,8	37	PHF M-...	
N	2-7/16	5-1/8	6	1,50	7,00	10,00	8,12	6,25	0,56	3/4	25,9	57	PHF N-...	
P	2-15/16	5-15/16	7	1,75	8,25	11,75	9,38	7,25	0,63	7/8	54,4	120	PHF P-...	
W	4	7-1/2	8-1/2	2,00	10,42	15,00	11,38	9,00	0,50	1	113,4	250	PHF W-...	
S	6	8-1/4	10	2,75	12,13	17,75	15,25	12	0,75	1-1/4	181,4	400	PHF S-...	

To complete the designation add bore size in inch or millimetres (standard bore sizes available on next page). Eg.: PHF SDS-1-11/16 and PHF SDS-25MM.



QD Bushings

Dimensions

► QD Bushings

► Classical V-belt pulleys

► . Narrow wedge belt pulleys

Inch bores and keyway

Bushing	Bores	Keyway
JA	$\frac{3}{8} - \frac{7}{8}$	No Keyway
	$\frac{1}{2} - 1$	STD
	$1 \frac{1}{16} - 1 \frac{1}{8}$	$\frac{1}{4} - \frac{1}{16}$
	$1 \frac{3}{16}$	$\frac{1}{4} - \frac{1}{16}$
SH	$1 \frac{1}{4}$	No Keyway
	$\frac{1}{2} - 1 \frac{3}{8}$	STD
	$1 \frac{7}{16} - 1 \frac{1}{2}$	$\frac{3}{8} \times \frac{1}{16}$
	$1 \frac{9}{16} - 1 \frac{5}{8}$	$\frac{3}{8} \times \frac{1}{16}$
SDS	$1 \frac{11}{16}$	No Keyway
	$\frac{1}{2} - 1 \frac{11}{16}$	STD
	$1 \frac{3}{4}$	$\frac{3}{8} \times \frac{1}{8}$
	$1 \frac{13}{16}$	$\frac{1}{2} \times \frac{1}{8}$
	$1 \frac{7}{8} - 1 \frac{15}{16}$	$\frac{1}{2} \times \frac{1}{16}$
SD	2	No Keyway
	$\frac{1}{2} - 1 \frac{11}{16}$	STD
	$1 \frac{3}{4}$	$\frac{3}{8} \times \frac{1}{8}$
	$1 \frac{13}{16}$	$\frac{1}{2} \times \frac{1}{8}$
	$1 \frac{7}{8}$	$\frac{1}{2} \times \frac{1}{16}$
SK	$1 \frac{15}{16}$	$\frac{1}{2} \times \frac{1}{16}$
	2	No Keyway
	$\frac{1}{2} - 2 \frac{1}{8}$	STD
	$2 \frac{3}{16} - 2 \frac{1}{4}$	$\frac{1}{2} \times \frac{1}{8}$
	$2 \frac{5}{16} - 2 \frac{1}{2}$	$\frac{5}{8} \times \frac{1}{16}$
SF	$2 \frac{9}{16} - 2 \frac{5}{8}$	No Keyway
	$\frac{1}{2} - 2 \frac{1}{4}$	STD
	$2 \frac{5}{16} - 2 \frac{1}{2}$	$\frac{5}{8} \times \frac{1}{16}$
	$2 \frac{9}{16} - 2 \frac{3}{4}$	$\frac{5}{8} \times \frac{1}{16}$
E	$2 \frac{13}{16} - 2 \frac{7}{8}$	$\frac{3}{4} \times \frac{1}{16}$
	$2 \frac{15}{16}$	$\frac{3}{4} \times \frac{1}{32}$
	$\frac{7}{8} - 2 \frac{7}{8}$	STD
	$2 \frac{15}{16} - 3 \frac{1}{4}$	$\frac{3}{4} \times \frac{1}{8}$
F	$3 \frac{3}{8} - 3 \frac{1}{2}$	$\frac{7}{8} \times \frac{1}{16}$
	$1 - 3 \frac{5}{16}$	STD
	$3 \frac{3}{8} - 3 \frac{3}{4}$	$\frac{7}{8} \times \frac{3}{16}$
J	$3 \frac{7}{8} - 3 \frac{15}{16}$	$1 \times \frac{1}{8}$
	4	No Keyway
	$1 \frac{1}{4} - 3 \frac{3}{4}$	STD
M	$3 \frac{13}{16} - 4 \frac{1}{2}$	$1 \times \frac{1}{8}$
	$2 - 4 \frac{3}{4}$	STD
N	$4 \frac{13}{16} - 5 \frac{1}{2}$	$1 \frac{1}{4} \times \frac{1}{4}$
	$2 \frac{7}{16} - 5$	STD
P	$5 \frac{7}{8} - 5 \frac{1}{2}$	$1 \frac{1}{4} \times \frac{1}{4}$
	$5 \frac{9}{16} - 6$	$1 \frac{1}{2} \times \frac{1}{4}$
	$2 \frac{15}{16} - 5 \frac{15}{16}$	STD
W	$6 - 6 \frac{1}{2}$	$1 \frac{1}{2} \times \frac{1}{4}$
	$6 \frac{9}{16} - 7$	$1 \frac{3}{4} \times \frac{1}{8}$
	$4 - 7 \frac{1}{2}$	STD
	$7 \frac{9}{16} - 8 \frac{1}{2}$	$2 \times \frac{1}{4}$

Metric bores and keyway

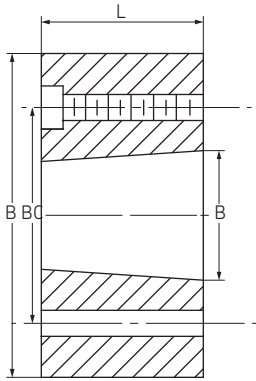
Bushing	Bore (mm)	Keyway - WxT (mm)*
SH	24, 25	8 x 7
	28, 30	
	32, 35	10 x 8
SDS	24, 25	8 x 7
	28, 30	
	32, 35	10 x 8
SD	38	
	40, 42	12 x 8
	24, 25	8 x 7
SK	28, 30	
	32, 35	10 x 8
	38	
	40, 42	12 x 8
SF	48, 50	14 x 9
	55	16 x 10
	28, 30	8 x 7
	32, 35	10 x 8
	38	
E	40, 42	12 x 8
	48, 50	14 x 9
	55	16 x 10
	60	18 x 11
	35, 38	10 x 8
F	40, 42	12 x 8
	48, 50	14 x 9
	55	16 x 10
	60, 65	18 x 11
	70, 75	20 x 12
	48, 50	14 x 9
J	55	16 x 10
	60, 65	18 x 11
	70, 75	20 x 12
	80, 85	22 x 14
	90	25 x 14
	50	14 x 9
	55	16 x 10
	60, 65	18 x 11
	70, 75	20 x 12
	80, 85	22 x 14
	90, 95	25 x 14
	100	28 x 16

* Important

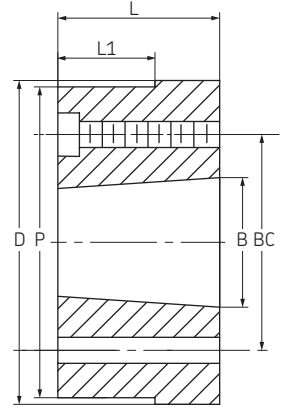
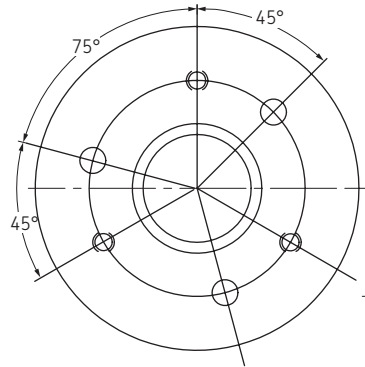
The metric system does not refer to keyseat or keyway dimensions as does the English system, instead dimensions are given for the key itself which is rectangular in shape, not square as in the English system



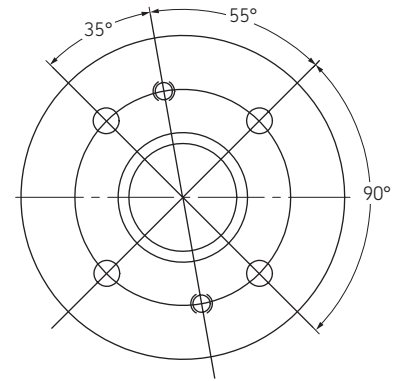
Weld-on hubs



Type 1



Type 2



Bushing	Dimensions (mm)						Type drilling	Approx Weight (kg)	Mounting	Designation
	D	L	B	P	L1	BC				
JA	57,2	14,3	34,9	-	-	42,1	1	0,18	Std or Reverse Mount	PHH WJA...
SH	76,2	20,6	47,5	-	-	57,2	1	0,45		PHH WSH...
SDS	88,9	19,1	55,6	-	-	68,3	1	0,57		PHH WSDS...
SK	111,1	31,8	71,5	-	-	84,1	1	1,36		PHH WSK...
SF	127,0	31,8	79,4	-	-	98,4	1	1,81		PHH WSF...
E	158,8	41,3	97,3	-	-	127,0	1	4,08		PHH WE...
F	177,8	63,5	112,7	-	-	142,9	1	7,26		PHH WF...
J	196,9	81,0	130,6	-	-	158,8	1	10,21	PHH WJ...	
M	241,3	131,8	164,9	235,0	90,5	200,0	2	22,69	Std Mount only	PHH WM...
N	266,7	158,8	177,5	260,4	114,3	215,9	2	34,03		PHH WN...
P	330,2	184,2	209,3	-	-	254,0	2	70,33		PHH WP...
W	393,7	228,6	265,1	-	-	323,9	2	136,12		PHH WW...
S	495,3	304,8	308,0	476,3	-	381,0	2	253,18		PHH WS...

Pulleys



Classical V-belt pulleys

A and B section QD bushed



1 Groove

Pitch Diameter		O.D.	Pulley Type	Bushing	Bore		E	L	M	Weight lbs	Weight kg	Designation
B Belts	A Belts				min	max						
3,4	3,0	3,75	E-1	SH	1/2	1 5/8	7/32	1 5/16	21/32	4,4	2,0	PHP 1-B34-SH
3,6	3,2	3,95	D-1	SH	1/2	1 5/8	19/32	1 5/16	5/32	4,9	2,2	PHP 1-B36-SH
3,8	3,4	4,15	D-1	SH	1/2	1 5/8	19/32	1 5/16	5/32	5,3	2,4	PHP 1-B38-SH
4,0	3,6	4,35	C-1	SH	1/2	1 5/8	11/32	1 5/16	3/32	6,0	2,7	PHP 1-B40-SH
4,2	3,8	4,55	C-1	SH	1/2	1 5/8	11/32	1 5/16	3/32	6,4	2,9	PHP 1-B42-SH
4,4	4,0	4,75	C-1	SH	1/2	1 5/8	11/32	1 5/16	3/32	7,5	3,4	PHP 1-B44-SH
4,6	4,2	4,95	C-1	SDS	1/2	2	11/32	1 5/16	3/32	8,8	4,0	PHP 1-B46-SDS
4,8	4,4	5,15	C-1	SDS	1/2	2	11/32	1 5/16	3/32	9,5	4,3	PHP 1-B48-SDS
5,0	4,6	5,35	C-1	SDS	1/2	2	11/32	1 5/16	3/32	10,4	4,7	PHP 1-B50-SDS
5,2	4,8	5,55	C-1	SDS	1/2	2	11/32	1 5/16	3/32	11,0	5,0	PHP 1-B52-SDS
5,4	5,0	5,75	C-1	SDS	1/2	2	11/32	1 5/16	3/32	11,7	5,3	PHP 1-B54-SDS
5,6	5,2	5,95	C-1	SDS	1/2	2	11/32	1 5/16	3/32	12,3	5,6	PHP 1-B56-SDS
5,8	5,4	6,15	C-2	SDS	1/2	2	11/32	1 5/16	3/32	13,0	5,9	PHP 1-B58-SDS
6,0	5,6	6,35	C-2	SDS	1/2	2	11/32	1 5/16	3/32	13,7	6,2	PHP 1-B60-SDS
6,2	5,8	6,55	C-2	SDS	1/2	2	11/32	1 5/16	3/32	14,3	6,5	PHP 1-B62-SDS
6,4	6,0	6,75	C-2	SDS	1/2	2	11/32	1 5/16	3/32	15,0	6,8	PHP 1-B64-SDS
6,6	6,2	6,95	C-2	SDS	1/2	2	11/32	1 5/16	3/32	15,9	7,2	PHP 1-B66-SDS
6,8	6,4	7,15	C-3	SDS	1/2	2	11/32	1 5/16	3/32	16,5	7,5	PHP 1-B68-SDS
7,0	6,6	7,35	C-3	SDS	1/2	2	11/32	1 5/16	3/32	17,2	7,8	PHP 1-B70-SDS
7,4	7,0	7,75	D-3	SDS	1/2	2	17/32	1 5/16	7/32	19,4	8,8	PHP 1-B74-SDS
8,0	7,6	8,35	D-3	SDS	1/2	2	17/32	1 5/16	7/32	21,2	9,6	PHP 1-B80-SDS
8,6	8,2	8,95	D-3	SDS	1/2	2	17/32	1 5/16	7/32	22,0	10,0	PHP 1-B86-SDS
9,4	9,0	9,75	D-3	SDS	1/2	2	17/32	1 5/16	7/32	23,1	10,5	PHP 1-B94-SDS
11,0	10,6	11,35	D-3	SDS	1/2	2	17/32	1 5/16	7/32	24,3	11,0	PHP 1-B110-SDS
12,4	12,0	12,75	D-3	SDS	1/2	2	17/32	1 5/16	7/32	26,5	12,0	PHP 1-B124-SDS
13,6	13,2	13,95	D-3	SDS	1/2	2	17/32	1 5/16	7/32	30,9	14,0	PHP 1-B136-SDS
15,4	15,0	15,75	C-3	SK	1/2	2 5/8	21/32	1 15/16	9/32	35,3	16,0	PHP 1-B154-SK
16,0	15,6	16,35	C-3	SK	1/2	2 5/8	21/32	1 15/16	9/32	36,6	16,6	PHP 1-B160-SK
18,4	18,0	18,75	C-3	SK	1/2	2 5/8	21/32	1 15/16	9/32	39,7	18,0	PHP 1-B184-SK
20,0	19,6	20,35	C-3	SK	1/2	2 5/8	21/32	1 15/16	9/32	44,1	20,0	PHP 1-B200-SK

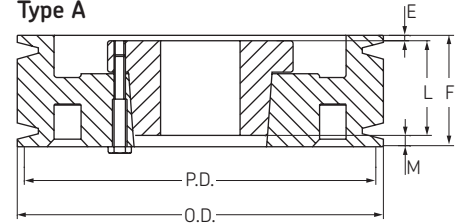
F = 7/8" (1-B34-SH - 1-B70-SDS) F = 1" (1-B74-SDS - 1-B200-SK)

2 Groove

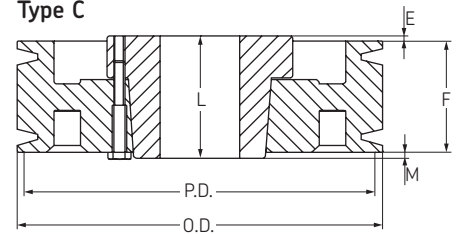
Pitch Diameter		O.D.	Pulley Type	Bushing	Bore		E	L	M	Weight lbs	Weight kg	Designation
B Belts	A Belts				min	max						
3,4	3,0	3,75	E-1	SH	1/2	1 5/8	1 3/32	1 5/16	21/32	7,1	3,2	PHP 2-B34-SH
3,6	3,2	3,95	D-1	SH	1/2	1 5/8	15/32	1 5/16	29/32	7,5	3,4	PHP 2-B36-SH
3,8	3,4	4,15	D-1	SH	1/2	1 5/8	15/32	1 5/16	29/32	8,6	3,9	PHP 2-B38-SH
4,0	3,6	4,35	A-1	SH	1/2	1 5/8	1/32	1 5/16	13/32	9,0	4,1	PHP 2-B40-SH
4,2	3,8	4,55	A-1	SH	1/2	1 5/8	1/32	1 5/16	13/32	9,7	4,4	PHP 2-B42-SH
4,4	4,0	4,75	A-1	SH	1/2	1 5/8	1/32	1 5/16	13/32	10,1	4,6	PHP 2-B44-SH
4,6	4,2	4,95	A-1	SDS	1/2	2	1/32	1 5/16	13/32	11,0	5,0	PHP 2-B46-SDS
4,8	4,4	5,15	A-1	SDS	1/2	2	1/32	1 5/16	13/32	11,9	5,4	PHP 2-B48-SDS
5,0	4,6	5,35	A-1	SDS	1/2	2	1/32	1 5/16	13/32	13,2	6,0	PHP 2-B50-SDS
5,2	4,8	5,55	A-1	SDS	1/2	2	1/32	1 5/16	13/32	13,9	6,3	PHP 2-B52-SDS
5,4	5,0	5,75	A-1	SDS	1/2	2	1/32	1 5/16	13/32	14,6	6,6	PHP 2-B54-SDS
5,6	5,2	5,95	A-2	SDS	1/2	2	1/32	1 5/16	13/32	15,2	6,9	PHP 2-B56-SDS
5,8	5,4	6,15	A-2	SDS	1/2	2	1/32	1 5/16	13/32	15,9	7,2	PHP 2-B58-SDS
6,0	5,6	6,35	A-2	SDS	1/2	2	1/32	1 5/16	13/32	16,5	7,5	PHP 2-B60-SDS
6,2	5,8	6,55	A-2	SDS	1/2	2	1/32	1 5/16	13/32	17,2	7,8	PHP 2-B62-SDS
6,4	6,0	6,75	A-2	SDS	1/2	2	1/32	1 5/16	13/32	18,1	8,2	PHP 2-B64-SDS
6,6	6,2	6,95	A-2	SDS	1/2	2	1/32	1 5/16	13/32	19,0	8,6	PHP 2-B66-SDS
6,8	6,4	7,15	A-3	SDS	1/2	2	1/32	1 5/16	13/32	19,8	9,0	PHP 2-B68-SDS
7,0	6,6	7,35	D-1	SK	1/2	2 5/8	11/32	1 15/16	5/32	20,5	9,3	PHP 2-B70-SK
7,4	7,0	7,75	D-3	SK	1/2	2 5/8	11/32	1 15/16	5/32	23,4	10,6	PHP 2-B74-SK
8,0	7,6	8,35	D-3	SK	1/2	2 5/8	11/32	1 15/16	5/32	24,3	11,0	PHP 2-B80-SK
8,6	8,2	8,95	D-3	SK	1/2	2 5/8	11/32	1 15/16	5/32	25,6	11,6	PHP 2-B86-SK
9,4	9,0	9,75	D-3	SK	1/2	2 5/8	11/32	1 15/16	5/32	28,7	13,0	PHP 2-B94-SK
11,0	10,6	11,35	D-3	SK	1/2	2 5/8	11/32	1 15/16	5/32	30,9	14,0	PHP 2-B110-SK
12,4	12,0	12,75	D-3	SK	1/2	2 5/8	11/32	1 15/16	5/32	39,7	18,0	PHP 2-B124-SK
13,6	13,2	13,95	D-3	SK	1/2	2 5/8	11/32	1 15/16	5/32	44,1	20,0	PHP 2-B136-SK
15,4	15,0	15,75	D-3	SK	1/2	2 5/8	11/32	1 15/16	5/32	50,7	23,0	PHP 2-B154-SK
16,0	15,6	16,35	D-3	SK	1/2	2 5/8	11/32	1 15/16	5/32	52,9	24,0	PHP 2-B160-SK
18,4	18,0	18,75	D-3	SK	1/2	2 5/8	11/32	1 15/16	5/32	63,9	29,0	PHP 2-B184-SK
20,0	19,6	20,35	D-3	SF	1/2	2 15/16	15/32	2 1/16	5/32	72,8	33,0	PHP 2-B200-SF
25,0	24,6	25,35	D-3	SF	1/2	2 15/16	15/32	2 1/16	5/32	90,4	41,0	PHP 2-B250-SF
30,0	29,6	30,35	D-3	SF	1/2	2 15/16	15/32	2 1/16	5/32	112,4	51,0	PHP 2-B300-SF
38,0	37,6	38,35	D-3	SF	1/2	2 15/16	15/32	2 1/16	5/32	141,1	64,0	PHP 2-B380-SF

F = 1 3/4"

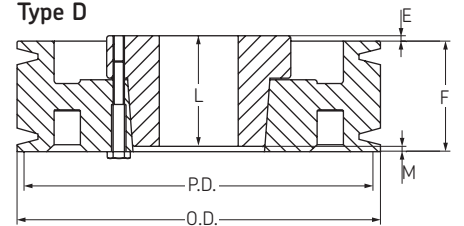
Type A



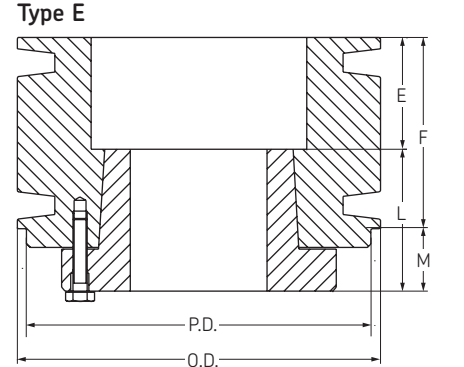
Type C



Type D



Type E





Classical V-belt pulleys

A and B section QD bushed

► QD Bushings

► Classical V-belt pulleys

► . Narrow wedge belt pulleys

3 Groove

Pitch Diameter		O.D.	Pulley Type	Bushing	Bore		E	L	M	Weight lbs	Weight kg	Designation
B Belts	A Belts				min	max						
3,4	3,0	3,75	E-1	SH	1/2	1 5/8	1 37/32	1 5/16	21/32	9,7	4,4	PHP 3-B34-SH
3,6	3,2	3,95	D-1	SH	1/2	1 5/8	15/32	1 5/16	1 21/32	10,4	4,7	PHP 3-B36-SH
3,8	3,4	4,15	D-1	SH	1/2	1 5/8	15/32	1 5/16	1 21/32	11,7	5,3	PHP 3-B38-SH
4,0	3,6	4,35	D-1	SH	1/2	1 5/8	15/32	1 5/16	1 21/32	12,3	5,6	PHP 3-B40-SH
4,2	3,8	4,55	D-1	SH	1/2	1 5/8	15/32	1 5/16	1 21/32	13,0	5,9	PHP 3-B42-SH
4,4	4,0	4,75	D-1	SH	1/2	1 5/8	15/32	1 5/16	1 21/32	13,9	6,3	PHP 3-B44-SH
4,6	4,2	4,95	A-1	SD	1/2	2	13/32	1 13/16	9/32	14,8	6,7	PHP 3-B46-SD
4,8	4,4	5,15	A-1	SD	1/2	2	13/32	1 13/16	9/32	15,7	7,1	PHP 3-B48-SD
5,0	4,6	5,35	A-1	SD	1/2	2	13/32	1 13/16	9/32	16,3	7,4	PHP 3-B50-SD
5,2	4,8	5,55	A-1	SD	1/2	2	13/32	1 13/16	9/32	17,2	7,8	PHP 3-B52-SD
5,4	5,0	5,75	A-1	SD	1/2	2	13/32	1 13/16	9/32	18,1	8,2	PHP 3-B54-SD
5,6	5,2	5,95	A-1	SD	1/2	2	13/32	1 13/16	9/32	18,7	8,5	PHP 3-B56-SD
5,8	5,4	6,15	A-1	SD	1/2	2	13/32	1 13/16	9/32	19,4	8,8	PHP 3-B58-SD
6,0	5,6	6,35	A-1	SD	1/2	2	13/32	1 13/16	9/32	20,1	9,1	PHP 3-B60-SD
6,2	5,8	6,55	A-1	SD	1/2	2	13/32	1 13/16	9/32	20,7	9,4	PHP 3-B62-SD
6,4	6,0	6,75	A-1	SD	1/2	2	13/32	1 13/16	9/32	21,4	9,7	PHP 3-B64-SD
6,6	6,2	6,95	A-1	SD	1/2	2	13/32	1 13/16	9/32	22,0	10,0	PHP 3-B66-SD
6,8	6,4	7,15	B-3	SD	1/2	2	13/32	1 13/16	9/32	23,1	10,5	PHP 3-B68-SD
7,0	6,6	7,35	D-1	SK	1/2	2 5/8	3/32	1 15/16	21/32	24,3	11,0	PHP 3-B70-SK
7,4	7,0	7,75	D-3	SK	1/2	2 5/8	3/32	1 15/16	21/32	26,5	12,0	PHP 3-B74-SK
8,0	7,6	8,35	D-3	SK	1/2	2 5/8	3/32	1 15/16	21/32	27,6	12,5	PHP 3-B80-SK
8,6	8,2	8,95	D-3	SK	1/2	2 5/8	3/32	1 15/16	21/32	28,7	13,0	PHP 3-B86-SK
9,4	9,0	9,75	D-3	SK	1/2	2 5/8	3/32	1 15/16	21/32	35,3	16,0	PHP 3-B94-SK
11,0	10,6	11,35	D-3	SK	1/2	2 5/8	3/32	1 15/16	21/32	41,9	19,0	PHP 3-B110-SK
12,4	12,0	12,75	D-3	SK	1/2	2 5/8	3/32	1 15/16	21/32	52,9	24,0	PHP 3-B124-SK
13,6	13,2	13,95	D-3	SK	1/2	2 5/8	3/32	1 15/16	21/32	59,5	27,0	PHP 3-B136-SK
15,4	15,0	15,75	D-3	SK	1/2	2 5/8	3/32	1 15/16	21/32	66,1	30,0	PHP 3-B154-SK
16,0	15,6	16,35	D-3	SK	1/2	2 5/8	3/32	1 15/16	21/32	72,8	33,0	PHP 3-B160-SK
18,4	18,0	18,75	D-3	SK	1/2	2 5/8	3/32	1 15/16	21/32	83,8	38,0	PHP 3-B184-SK
20,0	19,6	20,35	D-3	SF	1/2	2 15/16	7/32	2 1/16	21/32	94,8	43,0	PHP 3-B200-SF
25,0	24,6	25,35	D-3	SF	1/2	2 15/16	7/32	2 1/16	21/32	119,0	54,0	PHP 3-B250-SF
30,0	29,6	30,35	D-3	SF	1/2	2 15/16	7/32	2 1/16	21/32	147,7	67,0	PHP 3-B300-SF
38,0	37,6	38,35	D-3	E	7/8	3 1/2	17/32	2 3/4	9/32	198,4	90,0	PHP 3-B380-E

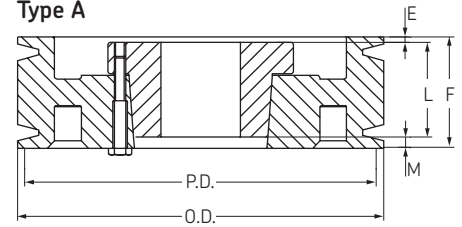
F = 2 1/2" (3-B34-SH - 3-B380-E)

4 Groove

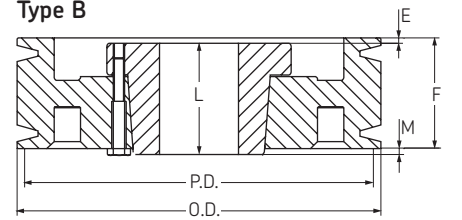
Pitch Diameter		O.D.	Pulley Type	Bushing	Bore		E	L	M	Weight lbs	Weight kg	Designation
B Belts	A Belts				min	max						
3,4	3,0	3,75	E-1	SD	1/2	2	2 15/32	1 13/16	1 1/32	12,1	5,5	PHP 4-B34-SD
3,6	3,2	3,95	E-1	SD	1/2	2	2 15/32	1 13/16	1 1/32	12,8	5,8	PHP 4-B36-SD
3,8	3,4	4,15	E-1	SD	1/2	2	2 15/32	1 13/16	1 1/32	13,7	6,2	PHP 4-B38-SD
4,0	3,6	4,35	E-1	SD	1/2	2	2 2/32	1 13/16	21/32	14,6	6,6	PHP 4-B40-SD
4,2	3,8	4,55	E-1	SD	1/2	2	2 2/32	1 13/16	21/32	15,2	6,9	PHP 4-B42-SD
4,4	4,0	4,75	E-1	SD	1/2	2	2 2/32	1 13/16	21/32	15,9	7,2	PHP 4-B44-SD
4,6	4,2	4,95	A-1	SD	1/2	2	21/32	1 13/16	25/32	16,8	7,6	PHP 4-B46-SD
4,8	4,4	5,15	A-1	SD	1/2	2	21/32	1 13/16	25/32	17,6	8,0	PHP 4-B48-SD
5,0	4,6	5,35	A-1	SD	1/2	2	21/32	1 13/16	25/32	18,5	8,4	PHP 4-B50-SD
5,2	4,8	5,55	A-1	SD	1/2	2	21/32	1 13/16	25/32	18,7	8,5	PHP 4-B52-SD
5,4	5,0	5,75	A-1	SD	1/2	2	21/32	1 13/16	25/32	20,3	9,2	PHP 4-B54-SD
5,6	5,2	5,95	A-1	SD	1/2	2	21/32	1 13/16	25/32	21,2	9,6	PHP 4-B56-SD
5,8	5,4	6,15	A-1	SD	1/2	2	21/32	1 13/16	25/32	22,0	10,0	PHP 4-B58-SD
6,0	5,6	6,35	A-1	SD	1/2	2	21/32	1 13/16	25/32	22,9	10,4	PHP 4-B60-SD
6,2	5,8	6,55	A-1	SD	1/2	2	21/32	1 13/16	25/32	23,8	10,8	PHP 4-B62-SD
6,4	6,0	6,75	A-1	SD	1/2	2	21/32	1 13/16	25/32	26,5	12,0	PHP 4-B64-SD
6,6	6,2	6,95	A-1	SD	1/2	2	21/32	1 13/16	25/32	27,3	12,4	PHP 4-B66-SD
6,8	6,4	7,15	A-3	SD	1/2	2	21/32	1 13/16	25/32	28,7	13,0	PHP 4-B68-SD
7,0	6,6	7,35	A-1	SK	1/2	2 5/8	7/32	1 15/16	1 2/32	29,8	13,5	PHP 4-B70-SK
7,4	7,0	7,75	A-3	SK	1/2	2 5/8	7/32	1 15/16	1 2/32	30,9	14,0	PHP 4-B74-SK
8,0	7,6	8,35	A-3	SK	1/2	2 5/8	7/32	1 15/16	1 2/32	34,2	15,5	PHP 4-B80-SK
8,6	8,2	8,95	A-3	SK	1/2	2 5/8	7/32	1 15/16	1 2/32	37,5	17,0	PHP 4-B86-SK
9,4	9,0	9,75	A-3	SK	1/2	2 5/8	7/32	1 15/16	1 2/32	41,9	19,0	PHP 4-B94-SK
11,0	10,6	11,35	A-3	SK	1/2	2 5/8	7/32	1 15/16	1 2/32	48,5	22,0	PHP 4-B110-SK
12,4	12,0	12,75	A-3	SK	1/2	2 5/8	7/32	1 15/16	1 2/32	63,9	29,0	PHP 4-B124-SK
13,6	13,2	13,95	A-3	SK	1/2	2 5/8	7/32	1 15/16	1 2/32	75,0	34,0	PHP 4-B136-SK
15,4	15,0	15,75	A-3	SF	1/2	2 15/16	5/32	2 1/16	1 1/32	86,0	39,0	PHP 4-B154-SF
16,0	15,6	16,35	A-3	SF	1/2	2 15/16	5/32	2 1/16	1 1/32	92,6	42,0	PHP 4-B160-SF
18,4	18,0	18,75	A-3	SF	1/2	2 15/16	5/32	2 1/16	1 1/32	103,6	47,0	PHP 4-B184-SF
20,0	19,6	20,35	A-3	SF	1/2	2 15/16	5/32	2 1/16	1 1/32	112,4	51,0	PHP 4-B200-SF
25,0	24,6	25,35	D-3	E	7/8	3 1/2	5/32	2 3/4	21/32	160,9	73,0	PHP 4-B250-E
30,0	29,6	30,35	D-3	E	7/8	3 1/2	5/32	2 3/4	21/32	189,6	86,0	PHP 4-B300-E
38,0	37,6	38,35	D-3	E	7/8	3 1/2	5/32	2 3/4	21/32	240,3	109,0	PHP 4-B380-E

F = 3 1/4" (4-B34-SD - 4-B380-E)

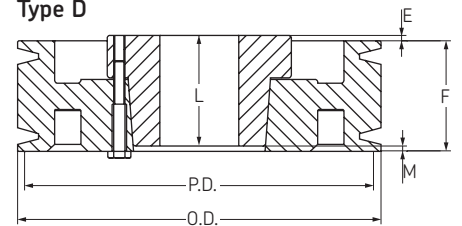
Type A



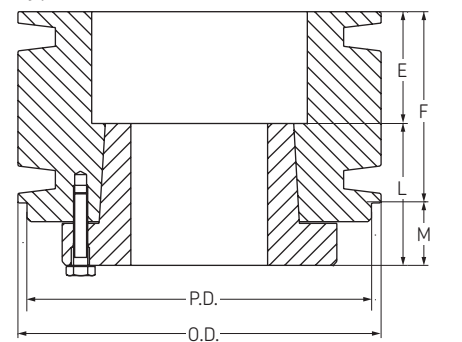
Type B



Type D



Type E



Classical V-belt pulleys

A and B section QD bushed

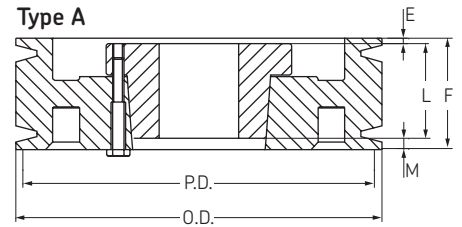


5 Groove

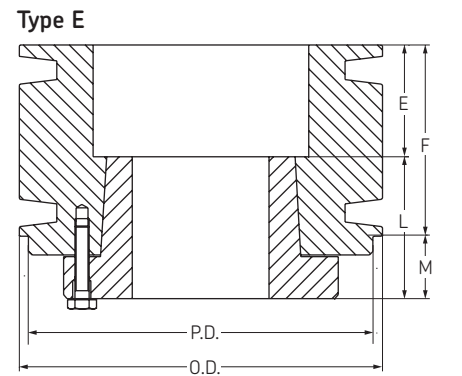
Pitch Diameter		O.D.	Pulley Type	Bushing	Bore		E	L	M	Weight lbs	Weight kg	Designation
B Belts	A Belts				min	max						
3,4	3,0	3,75	E-1	SD	1/2	2	3 7/32	1 13/16	1 1/32	13,4	6,1	PHP 5-B34-SD
3,6	3,2	3,95	E-1	SD	1/2	2	3 7/32	1 13/16	1 1/32	14,6	6,6	PHP 5-B36-SD
3,8	3,4	4,15	E-1	SD	1/2	2	3 7/32	1 13/16	1 1/32	15,7	7,1	PHP 5-B38-SD
4,0	3,6	4,35	E-1	SD	1/2	2	2 27/32	1 13/16	2 1/32	16,3	7,4	PHP 5-B40-SD
4,2	3,8	4,55	E-1	SD	1/2	2	2 27/32	1 13/16	2 1/32	17,6	8,0	PHP 5-B42-SD
4,4	4,0	4,75	E-1	SD	1/2	2	2 27/32	1 13/16	2 1/32	18,7	8,5	PHP 5-B44-SD
4,6	4,2	4,95	A-1	SD	1/2	2	2 1/32	1 13/16	1 17/32	19,8	9,0	PHP 5-B46-SD
4,8	4,4	5,15	A-1	SD	1/2	2	2 1/32	1 13/16	1 17/32	20,7	9,4	PHP 5-B48-SD
5,0	4,6	5,35	A-1	SD	1/2	2	2 1/32	1 13/16	1 17/32	22,0	10,0	PHP 5-B50-SD
5,2	4,8	5,55	A-1	SD	1/2	2	2 1/32	1 13/16	1 17/32	22,9	10,4	PHP 5-B52-SD
5,4	5,0	5,75	A-1	SK	1/2	2 5/8	1 17/32	1 15/16	1 17/32	23,8	10,8	PHP 5-B54-SK
5,6	5,2	5,95	A-1	SK	1/2	2 5/8	1 17/32	1 15/16	1 17/32	24,9	11,3	PHP 5-B56-SK
5,8	5,4	6,15	A-1	SK	1/2	2 5/8	1 17/32	1 15/16	1 17/32	26,5	12,0	PHP 5-B58-SK
6,0	5,6	6,35	A-1	SK	1/2	2 5/8	1 17/32	1 15/16	1 17/32	30,9	14,0	PHP 5-B60-SK
6,2	5,8	6,55	A-1	SK	1/2	2 5/8	1 17/32	1 15/16	1 17/32	33,1	15,0	PHP 5-B62-SK
6,4	6,0	6,75	A-1	SK	1/2	2 5/8	1 17/32	1 15/16	1 17/32	35,3	16,0	PHP 5-B64-SK
6,6	6,2	6,95	A-1	SK	1/2	2 5/8	1 17/32	1 15/16	1 17/32	37,5	17,0	PHP 5-B66-SK
6,8	6,4	7,15	A-1	SK	1/2	2 5/8	1 17/32	1 15/16	1 17/32	39,7	18,0	PHP 5-B68-SK
7,0	6,6	7,35	A-1	SF	1/2	2 15/16	1 15/32	2 1/16	1 15/32	41,9	19,0	PHP 5-B70-SF
7,4	7,0	7,75	A-2	SF	1/2	2 15/16	1 15/32	2 1/16	1 15/32	44,1	20,0	PHP 5-B74-SF
8,0	7,6	8,35	A-2	SF	1/2	2 15/16	1 15/32	2 1/16	1 15/32	46,3	21,0	PHP 5-B80-SF
8,6	8,2	8,95	A-2	SF	1/2	2 15/16	1 15/32	2 1/16	1 15/32	48,5	22,0	PHP 5-B86-SF
9,4	9,0	9,75	A-3	SF	1/2	2 15/16	1 15/32	2 1/16	1 15/32	52,9	24,0	PHP 5-B94-SF
11,0	10,6	11,35	A-3	SF	1/2	2 15/16	1 15/32	2 1/16	1 15/32	63,9	29,0	PHP 5-B110-SF
12,4	12,0	12,75	A-3	SF	1/2	2 15/16	1 15/32	2 1/16	1 15/32	75,0	34,0	PHP 5-B124-SF
13,6	13,2	13,95	A-3	SF	1/2	2 15/16	1 15/32	2 1/16	1 15/32	83,8	38,0	PHP 5-B136-SF
15,4	15,0	15,75	A-3	SF	1/2	2 15/16	1 15/32	2 1/16	1 15/32	101,4	46,0	PHP 5-B154-SF
16,0	15,6	16,35	A-3	SF	1/2	2 15/16	1 15/32	2 1/16	1 15/32	108,0	49,0	PHP 5-B160-SF
18,4	18,0	18,75	A-3	SF	1/2	2 15/16	1 15/32	2 1/16	1 15/32	121,3	55,0	PHP 5-B184-SF
20,0	19,6	20,35	A-3	E	7/8	3 1/2	2/32	2 3/4	1 5/32	143,3	65,0	PHP 5-B200-SE
25,0	24,6	25,35	A-3	E	7/8	3 1/2	2/32	2 3/4	1 5/32	189,6	86,0	PHP 5-B250-SE
30,0	29,6	30,35	A-3	E	7/8	3 1/2	2/32	2 3/4	1 5/32	224,9	102,0	PHP 5-B300-SE
38,0	37,6	38,35	A-3	E	7/8	3 1/2	2/32	2 3/4	1 5/32	291,0	132,0	PHP 5-B380-SE

F = 4" (5-B34-SD - 5-B380-SE)

Type A



Type E



6 Groove

Pitch Diameter		O.D.	Pulley Type	Bushing	Bore		E	L	M	Weight lbs	Weight kg	Designation
B Belts	A Belts				min	max						
3,4	3,0	3,75	E-1	SD	1/2	2	3 31/32	1 13/16	1 1/32	14,8	6,7	PHP 6-B34-SD
3,60	3,20	3,95	E-1	SD	1/2	2	3 31/32	1 13/16	1 1/32	16,3	7,4	PHP 6-B36-SD
3,80	3,40	4,15	E-1	SD	1/2	2	3 31/32	1 13/16	1 1/32	17,6	8,0	PHP 6-B38-SD
4,00	3,60	4,35	E-1	SD	1/2	2	3 19/32	1 13/16	2 1/32	18,5	8,4	PHP 6-B40-SD
4,20	3,80	4,55	E-1	SD	1/2	2	3 19/32	1 13/16	2 1/32	19,8	9,0	PHP 6-B42-SD
4,40	4,00	4,75	E-1	SD	1/2	2	3 19/32	1 13/16	2 1/32	21,4	9,7	PHP 6-B44-SD
4,60	4,20	4,95	A-1	SD	1/2	2	2 1/32	1 13/16	2 9/32	22,3	10,1	PHP 6-B46-SD
4,80	4,40	5,15	A-1	SD	1/2	2	2 1/32	1 13/16	2 9/32	23,4	10,6	PHP 6-B48-SD
5,00	4,60	5,35	A-1	SD	1/2	2	2 1/32	1 13/16	2 9/32	24,3	11,0	PHP 6-B50-SD
5,20	4,80	5,55	A-1	SD	1/2	2	2 1/32	1 13/16	2 9/32	26,5	12,0	PHP 6-B52-SD
5,40	5,00	5,75	A-1	SK	1/2	2 5/8	1 17/32	1 15/16	2 9/32	28,7	13,0	PHP 6-B54-SK
5,60	5,20	5,95	A-1	SK	1/2	2 5/8	1 17/32	1 15/16	2 9/32	30,9	14,0	PHP 6-B56-SK
5,80	5,40	6,15	A-1	SK	1/2	2 5/8	1 17/32	1 15/16	2 9/32	32,2	14,6	PHP 6-B58-SK
6,00	5,60	6,35	A-1	SK	1/2	2 5/8	1 17/32	1 15/16	2 9/32	33,1	15,0	PHP 6-B60-SK
6,20	5,80	6,55	A-1	SK	1/2	2 5/8	1 17/32	1 15/16	2 9/32	35,3	16,0	PHP 6-B62-SK
6,40	6,00	6,75	A-1	SK	1/2	2 5/8	1 17/32	1 15/16	2 9/32	37,5	17,0	PHP 6-B64-SK
6,60	6,20	6,95	A-1	SK	1/2	2 5/8	1 17/32	1 15/16	2 9/32	39,7	18,0	PHP 6-B66-SK
6,80	6,40	7,15	A-1	SK	1/2	2 5/8	1 17/32	1 15/16	2 9/32	41,9	19,0	PHP 6-B68-SK
7,00	6,60	7,35	A-1	SF	1/2	2 15/16	2 1/32	2 1/16	1 27/32	44,1	20,0	PHP 6-B70-SF
7,40	7,00	7,75	A-1	SF	1/2	2 15/16	2 1/32	2 1/16	1 27/32	48,5	22,0	PHP 6-B74-SF
8,00	7,60	8,35	A-2	SF	1/2	2 15/16	2 1/32	2 1/16	1 27/32	52,9	24,0	PHP 6-B80-SF
8,60	8,20	8,95	A-2	SF	1/2	2 15/16	2 1/32	2 1/16	1 27/32	57,3	26,0	PHP 6-B86-SF
9,40	9,00	9,75	A-3	SF	1/2	2 15/16	2 1/32	2 1/16	1 27/32	59,5	27,0	PHP 6-B94-SF
11,00	10,60	11,35	A-3	SF	1/2	2 15/16	2 1/32	2 1/16	1 27/32	70,5	32,0	PHP 6-B110-SF
12,40	12,00	12,75	A-3	SF	1/2	2 15/16	2 1/32	2 1/16	1 27/32	86,0	39,0	PHP 6-B124-SF
13,60	13,20	13,95	A-3	SF	1/2	2 15/16	2 1/32	2 1/16	1 27/32	97,0	44,0	PHP 6-B136-SF
15,40	15,00	15,75	A-3	SF	1/2	2 15/16	2 1/32	2 1/16	1 27/32	110,2	50,0	PHP 6-B154-SF
16,00	15,60	16,35	A-3	SF	1/2	2 15/16	2 1/32	2 1/16	1 27/32	119,0	54,0	PHP 6-B160-SF
18,40	18,00	18,75	A-3	SF	1/2	2 15/16	2 1/32	2 1/16	1 27/32	136,7	62,0	PHP 6-B184-SF
20,00	19,60	20,35	A-3	E	7/8	3 1/2	7/32	2 3/4	1 25/32	163,1	74,0	PHP 6-B200-E
25,00	24,60	25,35	A-3	E	7/8	3 1/2	7/32	2 3/4	1 25/32	211,6	96,0	PHP 6-B250-E
30,00	29,60	30,35	A-3	E	7/8	3 1/2	7/32	2 3/4	1 25/32	262,4	119,0	PHP 6-B300-E
38,00	37,60	38,35	A-3	E	7/8	3 1/2	7/32	2 3/4	1 25/32	295,4	134,0	PHP 6-B380-E

F = 4 3/4" (6-B34-SD - 6-B380-E)



Classical V-belt pulleys

A and B section QD bushed

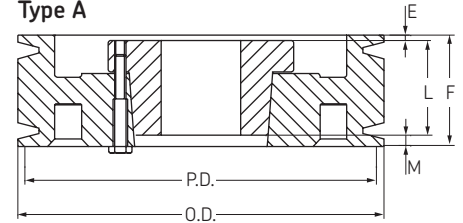
- ▶ QD Bushings
- ▶ Classical V-belt pulleys
- ▶ . Narrow wedge belt pulleys

8 Groove

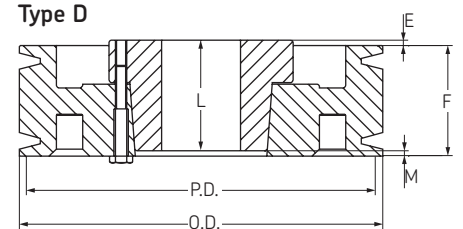
Pitch Diameter		O.D.	Pulley Type	Bushing	Bore		E	L	M	Weight lbs	Weight kg	Designation
B Belts	A Belts				min	max						
5,40	5,00	5,75	A-Sol, SK	SK	1/2	2 5/8	1 1/32	1 15/16	3 9/32	33,1	15,0	PHP 8-B54-SK
5,60	5,20	5,95	A-Sol, SK	SK	1/2	2 5/8	1 1/32	1 15/16	3 9/32	35,3	16,0	PHP 8-B56-SK
6,00	5,60	6,35	A-Sol, SF	SF	1/2	2 15/16	3 1/32	2 1/16	3 7/32	44,1	20,0	PHP 8-B60-SF
6,40	6,00	6,75	A-Sol, SF	SF	1/2	2 15/16	3 1/32	2 1/16	3 7/32	50,7	23,0	PHP 8-B64-SF
6,80	6,40	7,15	A-Sol, SF	SF	1/2	2 15/16	3 1/32	2 1/16	3 7/32	55,1	25,0	PHP 8-B68-SF
7,40	7,00	7,75	A-Sol, SF	SF	1/2	2 15/16	3 1/32	2 1/16	3 7/32	61,7	28,0	PHP 8-B74-SF
8,60	8,20	8,95	A-Sol, E	E	7/8	3 1/2	1 7/32	2 3/4	2 9/32	88,2	40,0	PHP 8-B86-E
9,40	9,00	9,75	A-2	E	7/8	3 1/2	1 7/32	2 3/4	2 9/32	94,8	43,0	PHP 8-B94-E
11,00	10,60	11,35	A-3	E	7/8	3 1/2	1 7/32	2 3/4	2 9/32	108,0	49,0	PHP 8-B110-E
12,40	12,00	12,75	A-3	E	7/8	3 1/2	1 7/32	2 3/4	2 9/32	123,5	56,0	PHP 8-B124-E
15,40	15,00	15,75	A-3	E	7/8	3 1/2	1 7/32	2 3/4	2 9/32	152,1	69,0	PHP 8-B154-E
18,40	18,00	18,75	D-3	F	1	4	1 1/32	3 3/4	2 17/32	200,6	91,0	PHP 8-B184-F
20,00	19,60	20,35	D-3	F	1	4	1 1/32	3 3/4	2 17/32	216,1	98,0	PHP 8-B200-F
25,00	24,60	25,35	D-3	F	1	4	1 1/32	3 3/4	2 17/32	266,8	121,0	PHP 8-B250-F
30,00	29,60	30,35	D-3	F	1	4	1 1/32	3 3/4	2 17/32	326,3	148,0	PHP 8-B300-F
38,00	37,60	38,35	D-3	F	1	4	1 1/32	3 3/4	2 17/32	427,7	194,0	PHP 8-B380-F

F = 6 1/4" (8-B54-SK - 8-B380-F)

Type A



Type D



10 Groove

Pitch Diameter		O.D.	Pulley Type	Bushing	Bore		E	L	M	Weight lbs	Weight kg	Designation
B Belts	A Belts				min	max						
5,40	5,00	5,75	A-1	SK	1/2	2 5/8	1 25/32	1 15/16	4 1/32	39,7	18,0	PHP 10-B54-SK
5,60	5,20	5,95	A-1	SK	1/2	2 5/8	1 25/32	1 15/16	4 1/32	44,1	20,0	PHP 10-B56-SK
6,00	5,60	6,35	A-1	SF	1/2	2 15/16	1 22/32	2 1/16	3 31/32	52,9	24,0	PHP 10-B60-SF
6,40	6,00	6,75	A-1	SF	1/2	2 15/16	1 22/32	2 1/16	3 31/32	57,3	26,0	PHP 10-B64-SF
6,80	6,40	7,15	A-1	SF	1/2	2 15/16	1 22/32	2 1/16	3 31/32	61,7	28,0	PHP 10-B68-SF
7,40	7,00	7,75	A-1	SF	1/2	2 15/16	1 22/32	2 1/16	3 31/32	70,5	32,0	PHP 10-B74-SF
8,60	8,20	8,95	A-1	E	7/8	3 1/2	1 31/32	2 3/4	3 1/32	92,6	42,0	PHP 10-B86-E
9,40	9,00	9,75	A-2	E	7/8	3 1/2	1 31/32	2 3/4	3 1/32	105,8	48,0	PHP 10-B94-E
11,00	10,60	11,35	A-3	E	7/8	3 1/2	1 31/32	2 3/4	3 1/32	123,5	56,0	PHP 10-B110-E
12,40	12,00	12,75	A-3	E	7/8	3 1/2	1 31/32	2 3/4	3 1/32	141,1	64,0	PHP 10-B124-E
15,40	15,00	15,75	A-3	F	1	4	5/8	3 3/4	3 9/32	194,0	88,0	PHP 10-B154-F
18,40	18,00	18,75	A-3	F	1	4	5/8	3 3/4	3 9/32	227,1	103,0	PHP 10-B184-F
20,00	19,60	20,35	A-3	F	1	4	5/8	3 3/4	3 9/32	246,9	112,0	PHP 10-B200-F
25,00	24,60	25,35	A-3	F	1	4	5/8	3 3/4	3 9/32	313,1	142,0	PHP 10-B250-F
30,00	29,60	30,35	A-3	F	1	4	5/8	3 3/4	3 9/32	383,6	174,0	PHP 10-B300-F
38,00	37,60	38,35	A-3	J	1 1/2	4 1/2	1 1/8	4 5/8	3	507,1	230,0	PHP 10-B380-J

F = 7 3/4" (10-B54-SK - 10-B380-J)

Classical V-belt pulleys

C section QD bushed

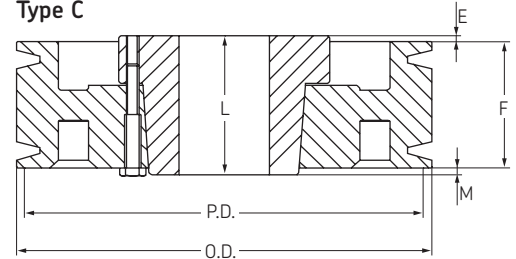


1 Groove

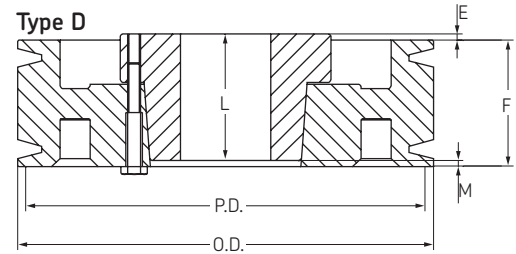
Pitch Diameter	O.D.	Pulley Type	Bushing	Bore		E	L	M	Weight lbs	Weight kg	Designation
				min	max						
7,0	7,40	D-1	SF	1/2	2 15/16	27/32	2 1/16	1/32	22,0	10	PHP 1-C70-SF
7,5	7,90	D-2	SF	1/2	2 15/16	27/32	2 1/16	1/32	26,5	12	PHP 1-C75-SF
8,0	8,40	D-2	SF	1/2	2 15/16	27/32	2 1/16	1/32	28,7	13	PHP 1-C80-SF
8,5	8,90	D-2	SF	1/2	2 15/16	27/32	2 1/16	1/32	30,9	14	PHP 1-C85-SF
9,0	9,40	D-3	SF	1/2	2 15/16	27/32	2 1/16	1/32	33,1	15	PHP 1-C90-SF
9,5	9,90	D-3	SF	1/2	2 15/16	27/32	2 1/16	1/32	35,3	16	PHP 1-C95-SF
10,0	10,40	D-3	SF	1/2	2 15/16	27/32	2 1/16	1/32	37,5	17	PHP 1-C100-SF
10,5	10,90	D-3	SF	1/2	2 15/16	27/32	2 1/16	1/32	39,7	18	PHP 1-C105-SF
11,0	11,40	D-3	SF	1/2	2 15/16	27/32	2 1/16	1/32	41,9	19	PHP 1-C110-SF
12,0	12,40	D-3	SF	1/2	2 15/16	27/32	2 1/16	1/32	44,1	20	PHP 1-C120-SF
13,0	13,40	D-3	SF	1/2	2 15/16	27/32	2 1/16	1/32	48,5	22	PHP 1-C130-SF
14,0	14,40	D-3	SF	1/2	2 15/16	27/32	2 1/16	1/32	52,9	24	PHP 1-C140-SF
16,0	16,40	D-3	SF	1/2	2 15/16	27/32	2 1/16	1/32	57,3	26	PHP 1-C160-SF
18,0	18,40	D-3	SF	1/2	2 15/16	27/32	2 1/16	1/32	66,1	30	PHP 1-C180-SF
20,0	20,40	D-3	SF	1/2	2 15/16	27/32	2 1/16	1/32	77,2	35	PHP 1-C200-SF
24,0	24,40	D-3	SF	1/2	2 15/16	27/32	2 1/16	1/32	90,4	41	PHP 1-C240-SF

F = 1 1/4" (1-C70-SF - 1-C240-SF)

Type C



Type D



2 Groove

Pitch Diameter	O.D.	Pulley Type	Bushing	Bore		E	L	M	Weight lbs	Weight kg	Designation
				min	max						
7,0	7,40	D-1	SF	1/2	2 15/16	3/32	2 1/16	9/32	33,1	15	PHP 2-C70-SF
7,5	7,90	D-1	SF	1/2	2 15/16	3/32	2 1/16	9/32	37,5	17	PHP 2-C75-SF
8,0	8,40	D-1	SF	1/2	2 15/16	3/32	2 1/16	9/32	39,7	18	PHP 2-C80-SF
8,5	8,90	D-2	SF	1/2	2 15/16	3/32	2 1/16	9/32	41,9	19	PHP 2-C85-SF
9,0	9,40	D-2	SF	1/2	2 15/16	3/32	2 1/16	9/32	44,1	20	PHP 2-C90-SF
9,5	9,90	D-2	SF	1/2	2 15/16	3/32	2 1/16	9/32	46,3	21	PHP 2-C95-SF
10,0	10,40	D-3	SF	1/2	2 15/16	3/32	2 1/16	9/32	48,5	22	PHP 2-C100-SF
10,5	10,90	D-3	SF	1/2	2 15/16	3/32	2 1/16	9/32	50,7	23	PHP 2-C105-SF
11,0	11,40	D-3	SF	1/2	2 15/16	3/32	2 1/16	9/32	52,9	24	PHP 2-C110-SF
12,0	12,40	D-3	SF	1/2	2 15/16	11/32	2 1/16	17/32	55,1	25	PHP 2-C120-SF
13,0	13,40	D-3	SF	1/2	2 15/16	11/32	2 1/16	17/32	61,7	28	PHP 2-C130-SF
14,0	14,40	D-3	SF	1/2	2 15/16	11/32	2 1/16	17/32	68,3	31	PHP 2-C140-SF
16,0	16,40	D-3	SF	1/2	2 15/16	11/32	2 1/16	17/32	79,4	36	PHP 2-C160-SF
18,0	18,40	D-3	SF	1/2	2 15/16	11/32	2 1/16	17/32	86,0	39	PHP 2-C180-SF
20,0	20,40	D-3	SF	1/2	2 15/16	11/32	2 1/16	17/32	105,8	48	PHP 2-C200-SF
24,0	24,40	D-3	SF	1/2	2 15/16	11/32	2 1/16	17/32	132,3	60	PHP 2-C240-SF
30,0	30,40	C-3	F	1	4	1 7/32	3 3/4	9/32	187,4	85	PHP 2-C300-F

F = 2 1/4" (2-C70-SF - 2-C300-F)



Classical V-belt pulleys

C section QD bushed

► QD Bushings

► Classical V-belt pulleys

► . Narrow wedge belt pulleys

3 Groove

Pitch Diameter	O.D.	Pulley Type	Bushing	Bore		E	L	M	Weight lbs	Weight kg	Designation
				min	max						
5,0	5,40	A-1	SD	1/2	2	19/32	1 13/16	27/32	22,0	10	PHP 3-C50-SD
5,5	5,90	A-1	SD	1/2	2	19/32	1 13/16	27/32	26,5	12	PHP 3-C55-SD
6,0	6,40	D-1	SF	1/2	2 15/16	23/32	2 1/16	1 29/32	33,1	15	PHP 3-C60-SF
7,0	7,40	A-1	SF	1/2	2 15/16	13/32	2 1/16	25/32	39,7	18	PHP 3-C70-SF
7,5	7,90	A-1	SF	1/2	2 15/16	13/32	2 1/16	25/32	44,1	20	PHP 3-C75-SF
8,0	8,40	B-1	E	7/8	3 1/2	17/32	2 3/4	1/32	57,3	26	PHP 3-C80-E
8,5	8,90	B-1	E	7/8	3 1/2	17/32	2 3/4	1/32	63,9	29	PHP 3-C85-E
9,0	9,40	A-1	E	7/8	3 1/2	15/32	2 3/4	1/32	70,5	32	PHP 3-C90-E
9,5	9,90	A-2	E	7/8	3 1/2	15/32	2 3/4	1/32	75,0	34	PHP 3-C95-E
10,0	10,40	A-2	E	7/8	3 1/2	15/32	2 3/4	1/32	79,4	36	PHP 3-C100-E
10,5	10,90	A-3	E	7/8	3 1/2	15/32	2 3/4	1/32	83,8	38	PHP 3-C105-E
11,0	11,40	A-3	E	7/8	3 1/2	15/32	2 3/4	1/32	88,2	40	PHP 3-C110-E
12,0	12,40	A-3	E	7/8	3 1/2	15/32	2 3/4	1/32	94,8	43	PHP 3-C120-E
13,0	13,40	A-3	E	7/8	3 1/2	15/32	2 3/4	1/32	99,2	45	PHP 3-C130-E
14,0	14,40	A-3	E	7/8	3 1/2	15/32	2 3/4	1/32	112,4	51	PHP 3-C140-E
16,0	16,40	A-3	E	7/8	3 1/2	15/32	2 3/4	1/32	130,1	59	PHP 3-C160-E
18,0	18,40	A-3	E	7/8	3 1/2	15/32	2 3/4	1/32	143,3	65	PHP 3-C180-E
20,0	20,40	D-3	F	7/8	3 1/2	7/32	2 3/4	23/32	154,3	70	PHP 3-C200-E
24,0	24,40	D-3	E	7/8	3 1/2	7/32	2 3/4	23/32	176,4	80	PHP 3-C240-E
27,0	27,40	D-3	F	1	4	21/32	3 3/4	5/32	231,5	105	PHP 3-C270-F
30,0	30,40	D-3	F	1	4	21/32	3 3/4	5/32	264,6	120	PHP 3-C300-F
36,0	36,40	D-3	F	1	4	21/32	3 3/4	5/32	308,6	140	PHP 3-C360-F
44,0	44,40	D-3	F	1	4	21/32	3 3/4	5/32	374,8	170	PHP 3-C440-F
50,0	50,40	D-3	F	1	4	21/32	3 3/4	5/32	418,9	190	PHP 3-C500-F

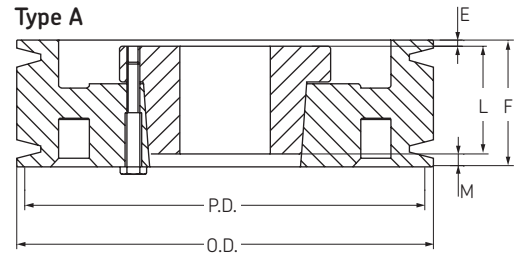
F = 3 1/4" (3-C50-SD - 3-C500-F)

4 Groove

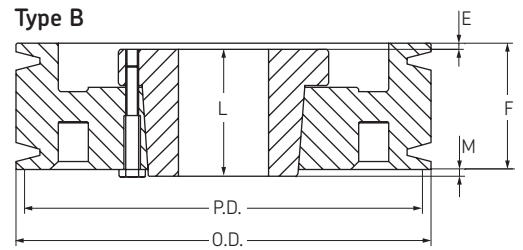
Pitch Diameter	O.D.	Pulley Type	Bushing	Bore		E	L	M	Weight lbs	Weight kg	Designation
				min	max						
5,0	5,40	A-1	SD	1/2	2	27/32	1 13/16	1 19/32	26,5	12	PHP 4-C50-SD
5,5	5,90	A-1	SD	1/2	2	27/32	1 13/16	1 19/32	30,9	14	PHP 4-C55-SD
6,0	6,40	A-1	SF	1/2	2 15/16	21/32	2 1/16	1 17/32	37,5	17	PHP 4-C60-SF
7,0	7,40	A-1	SF	1/2	2 15/16	21/32	2 1/16	1 17/32	46,3	21	PHP 4-C70-SF
7,5	7,90	A-1	SF	1/2	2 15/16	21/32	2 1/16	1 17/32	55,1	25	PHP 4-C75-SF
8,0	8,40	A-1	E	7/8	3 1/2	25/32	2 3/4	23/32	66,1	30	PHP 4-C80-E
8,5	8,90	A-1	E	7/8	3 1/2	25/32	2 3/4	23/32	72,8	33	PHP 4-C85-E
9,0	9,40	A-1	E	7/8	3 1/2	25/32	2 3/4	23/32	77,2	35	PHP 4-C90-E
9,5	9,90	A-2	E	7/8	3 1/2	25/32	2 3/4	23/32	83,8	38	PHP 4-C95-E
10,0	10,40	A-2	E	7/8	3 1/2	25/32	2 3/4	23/32	88,2	40	PHP 4-C100-E
10,5	10,90	A-2	E	7/8	3 1/2	25/32	2 3/4	23/32	94,8	43	PHP 4-C105-E
11,0	11,40	A-2	E	7/8	3 1/2	25/32	2 3/4	23/32	101,4	46	PHP 4-C110-E
12,0	12,40	A-3	E	7/8	3 1/2	25/32	2 3/4	23/32	110,2	50	PHP 4-C120-E
13,0	13,40	A-3	E	7/8	3 1/2	25/32	2 3/4	23/32	119,0	54	PHP 4-C130-E
14,0	14,40	A-3	E	7/8	3 1/2	25/32	2 3/4	23/32	130,1	59	PHP 4-C140-E
16,0	16,40	A-3	E	7/8	3 1/2	25/32	2 3/4	23/32	143,3	65	PHP 4-C160-E
18,0	18,40	A-3	E	7/8	3 1/2	25/32	2 3/4	23/32	160,9	73	PHP 4-C180-E
20,0	20,40	A-3	E	7/8	3 1/2	9/32	2 3/4	1 7/32	180,8	82	PHP 4-C200-E
24,0	24,40	D-3	F	1	4	3/32	3 3/4	19/32	231,5	105	PHP 4-C240-F
27,0	27,40	D-3	F	1	4	3/32	3 3/4	19/32	275,6	125	PHP 4-C270-F
30,0	30,40	D-3	F	1	4	3/32	3 3/4	19/32	313,1	142	PHP 4-C300-F
36,0	36,40	D-3	F	1	4	3/32	3 3/4	19/32	379,2	172	PHP 4-C360-F
44,0	44,40	C-3	J	1 1/2	4 1/2	0	4 5/8	3/8	496,0	225	PHP 4-C440-J
50,0	50,40	C-3	J	1 1/2	4 1/2	0	4 5/8	3/8	573,2	260	PHP 4-C500-J

F = 4 1/4" (4-C50-SD - 4-C500-J)

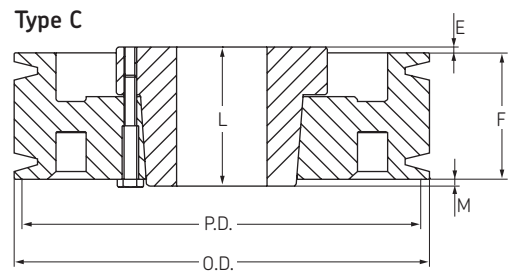
Type A



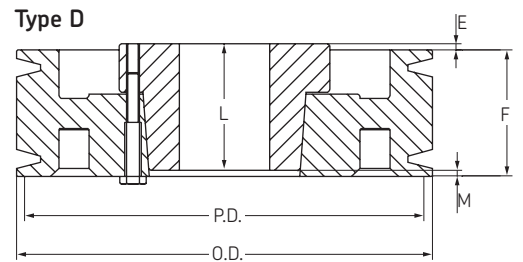
Type B



Type C



Type D



Classical V-belt pulleys

C section QD bushed

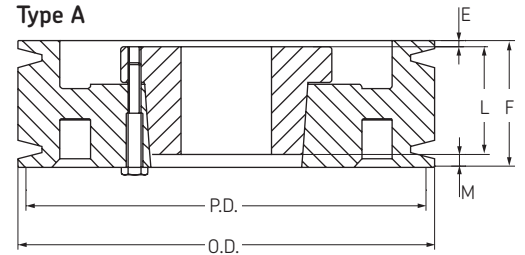


5 Groove

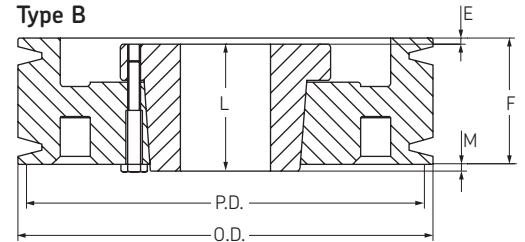
Pitch Diameter	O.D.	Pulley Type	Bushing	Bore		E	L	M	Weight lbs	Weight kg	Designation
				min	max						
6,0	6,40	A-1	SF	1/2	2 15/16	1 1/32	2 1/16	2 5/32	46,3	21	PHP 5-C60-SF
7,0	7,40	A-1	SF	1/2	2 15/16	1 1/32	2 1/16	2 5/32	57,3	26	PHP 5-C70-SF
7,5	7,90	A-1	SF	1/2	2 15/16	1 1/32	2 1/16	2 5/32	61,7	28	PHP 5-C75-SF
8,0	8,40	A-1	E	7/8	3 1/2	1 5/32	2 3/4	1 11/32	72,8	33	PHP 5-C80-E
8,5	8,90	A-1	E	7/8	3 1/2	1 5/32	2 3/4	1 11/32	81,6	37	PHP 5-C85-E
9,0	9,40	A-1	E	7/8	3 1/2	1 5/32	2 3/4	1 11/32	88,2	40	PHP 5-C90-E
9,5	9,90	A-2	E	7/8	3 1/2	1 5/32	2 3/4	1 11/32	92,6	42	PHP 5-C95-E
10,0	10,40	A-2	E	7/8	3 1/2	1 5/32	2 3/4	1 11/32	99,2	45	PHP 5-C100-E
10,5	10,90	A-2	E	7/8	3 1/2	1 5/32	2 3/4	1 11/32	103,6	47	PHP 5-C105-E
11,0	11,40	A-2	E	7/8	3 1/2	1 5/32	2 3/4	1 11/32	110,2	50	PHP 5-C110-E
12,0	12,40	A-2	E	7/8	3 1/2	1 5/32	2 3/4	1 11/32	116,8	53	PHP 5-C120-E
13,0	13,40	A-3	E	7/8	3 1/2	1 5/32	2 3/4	1 11/32	127,9	58	PHP 5-C130-E
14,0	14,40	A-3	E	7/8	3 1/2	1 5/32	2 3/4	1 11/32	141,1	64	PHP 5-C140-E
16,0	16,40	A-3	E	7/8	3 1/2	1 5/32	2 3/4	1 11/32	160,9	73	PHP 5-C160-E
18,0	18,40	A-3	E	7/8	3 1/2	1 5/32	2 3/4	1 11/32	187,4	85	PHP 5-C180-E
20,0	20,40	D-3	F	1	4	3/32	3 3/4	1 19/32	216,1	98	PHP 5-C200-F
24,0	24,40	D-3	F	1	4	3/32	3 3/4	1 19/32	262,4	119	PHP 5-C240-F
27,0	27,40	D-3	F	1	4	3/32	3 3/4	1 19/32	337,3	153	PHP 5-C270-F
30,0	30,40	D-3	F	1	4	3/32	3 3/4	1 19/32	383,6	174	PHP 5-C300-F
36,0	36,40	A-3	J	1 1/2	4 1/2	1/16	4 5/8	9/16	454,2	206	PHP 5-C360-J
44,0	44,40	A-3	J	1 1/2	4 1/2	1/16	4 5/8	9/16	560,0	254	PHP 5-C440-J
50,0	50,40	A-3	J	1 1/2	4 1/2	1/16	4 5/8	9/16	604,1	274	PHP 5-C500-J

F = 5 1/4" (5-C60-SF - 5-C500-J)

Type A



Type B

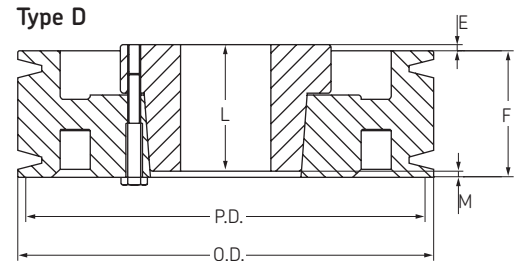


6 Groove

Pitch Diameter	O.D.	Pulley Type	Bushing	Bore		E	L	M	Weight lbs	Weight kg	Designation
				min	max						
6,0	6,40	A-1	SF	1/2	2 15/16	1 1/32	2 1/16	3 5/32	44,1	20	PHP 6-C60-SF
7,0	7,40	A-1	SF	1/2	2 15/16	1 1/32	2 1/16	3 5/32	57,3	26	PHP 6-C70-SF
7,5	7,90	A-1	SF	1/2	2 15/16	1 1/32	2 1/16	3 5/32	63,9	29	PHP 6-C75-SF
8,0	8,40	A-1	E	7/8	3 1/2	1 5/32	2 3/4	2 11/32	79,4	36	PHP 6-C80-E
8,5	8,90	A-1	E	7/8	3 1/2	1 5/32	2 3/4	2 11/32	86,0	39	PHP 6-C85-E
9,0	9,40	A-1	F	1	4	1 1/32	3 3/4	1 15/32	112,4	51	PHP 6-C90-F
9,5	9,90	A-1	F	1	4	1 1/32	3 3/4	1 15/32	121,3	55	PHP 6-C95-F
10,0	10,40	A-1	F	1	4	1 1/32	3 3/4	1 15/32	130,1	59	PHP 6-C100-F
10,5	10,90	A-2	F	1	4	1 1/32	3 3/4	1 15/32	136,7	62	PHP 6-C105-F
11,0	11,40	A-2	F	1	4	1 1/32	3 3/4	1 15/32	145,5	66	PHP 6-C110-F
12,0	12,40	A-2	F	1	4	1 1/32	3 3/4	1 15/32	154,3	70	PHP 6-C120-F
13,0	13,40	A-3	F	1	4	1 1/32	3 3/4	1 15/32	163,1	74	PHP 6-C130-F
14,0	14,40	A-3	F	1	4	1 1/32	3 3/4	1 15/32	176,4	80	PHP 6-C140-F
16,0	16,40	A-3	F	1	4	1 1/32	3 3/4	1 15/32	196,2	89	PHP 6-C160-F
18,0	18,40	A-3	F	1	4	1 1/32	3 3/4	1 15/32	224,9	102	PHP 6-C180-F
20,0	20,40	A-3	F	1	4	17/32	3 3/4	1 31/32	246,9	112	PHP 6-C200-F
24,0	24,40	A-3	F	1	4	17/32	3 3/4	1 31/32	288,8	131	PHP 6-C240-F
27,0	27,40	A-3	J	1 1/2	4 1/2	1/16	4 5/8	1 7/16	352,7	160	PHP 6-C270-J
30,0	30,40	A-3	J	1 1/2	4 1/2	1/16	4 5/8	1 7/16	418,9	190	PHP 6-C300-J
36,0	36,40	A-3	J	1 1/2	4 1/2	1/16	4 5/8	1 7/16	511,5	232	PHP 6-C360-J
44,0	44,40	A-3	J	1 1/2	4 1/2	1/16	4 5/8	1 7/16	659,2	299	PHP 6-C440-J
50,0	50,40	B-3	M	2	5 1/2	7/32	6 3/4	23/32	705,5	320	PHP 6-C500-M

F = 6 1/4" (6-C60-SF - 6-C500-M)

Type D





Classical V-belt pulleys

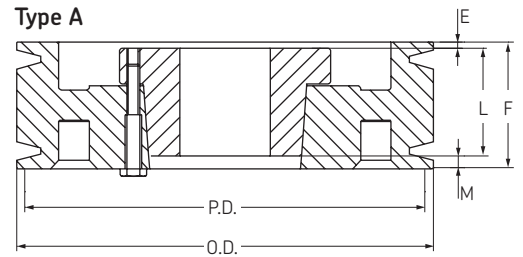
C section QD bushed

- ▶ QD Bushings
- ▶ Classical V-belt pulleys
- ▶ . Narrow wedge belt pulleys

8 Groove

Pitch Diameter	O.D.	Pulley Type	Bushing	Bore		E	L	M	Weight lbs	Weight kg	Designation
				min	max						
8,0	8,40	A-1	E	7/8	3 1/2	2 1/32	2 3/4	3 15/32	94,8	43	PHP 8-C80-E
8,5	8,90	A-1	E	7/8	3 1/2	2 1/32	2 3/4	3 15/32	105,8	48	PHP 8-C85-E
9,0	9,40	A-1	F	1	4	1 29/32	3 3/4	2 19/32	132,3	60	PHP 8-C90-F
9,5	9,90	A-1	F	1	4	1 29/32	3 3/4	2 19/32	143,3	65	PHP 8-C95-F
10,0	10,40	A-1	F	1	4	1 29/32	3 3/4	2 19/32	152,1	69	PHP 8-C100-F
10,5	10,90	A-2	F	1	4	1 29/32	3 3/4	2 19/32	160,9	73	PHP 8-C105-F
11,0	11,40	A-2	F	1	4	1 29/32	3 3/4	2 19/32	172,0	78	PHP 8-C110-F
12,0	12,40	A-3	F	1	4	1 29/32	3 3/4	2 19/32	183,0	83	PHP 8-C120-F
13,0	13,40	A-3	F	1	4	1 29/32	3 3/4	2 19/32	196,2	89	PHP 8-C130-F
14,0	14,40	A-3	F	1	4	1 29/32	3 3/4	2 19/32	213,8	97	PHP 8-C140-F
16,0	16,40	A-3	F	1	4	1 29/32	3 3/4	2 19/32	249,1	113	PHP 8-C160-F
18,0	18,40	A-3	F	1	4	1 29/32	3 3/4	2 19/32	288,8	131	PHP 8-C180-F
20,0	20,40	A-3	J	1 1/2	4 1/2	1/16	4 5/8	3 9/16	335,1	152	PHP 8-C200-J
24,0	24,40	A-3	J	1 1/2	4 1/2	1/16	4 5/8	3 9/16	407,9	185	PHP 8-C240-J
27,0	27,40	A-3	J	1 1/2	4 1/2	1/16	4 5/8	3 9/16	458,6	208	PHP 8-C270-J
30,0	30,40	A-3	J	1 1/2	4 1/2	1/16	4 5/8	3 9/16	507,1	230	PHP 8-C300-J
36,0	36,40	A-3	M	2	5 1/2	9/32	6 3/4	1 7/32	674,6	306	PHP 8-C360-M
44,0	44,40	A-3	M	2	5 1/2	9/32	6 3/4	1 7/32	881,8	400	PHP 8-C440-M
50,0	50,40	A-3	M	2	5 1/2	9/32	6 3/4	1 7/32	1047,2	475	PHP 8-C500-M

F = 8 1/4" (8-C80-E - 8-C500-M)



Classical V-belt pulleys

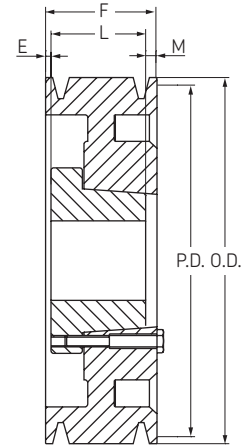
D section QD bushed



3 Groove

Pitch Diameter	O.D.	Pulley Type	Bushing	Bore		E	L	M	Weight lbs	Weight kg	Designation
				min	max						
12,0	12,64	A-2	F	1	4	5/32	3 3/4	23/32	154,3	70	PHP 3-D120-F
13,0	13,64	A-2	F	1	4	5/32	3 3/4	23/32	167,6	76	PHP 3-D130-F
13,5	14,14	A-2	F	1	4	5/32	3 3/4	23/32	174,2	79	PHP 3-D135-F
14,0	14,64	A-2	F	1	4	5/32	3 3/4	23/32	180,8	82	PHP 3-D140-F
14,5	15,14	A-3	F	1	4	5/32	3 3/4	23/32	187,4	85	PHP 3-D145-F
15,0	15,64	A-3	F	1	4	5/32	3 3/4	23/32	196,2	89	PHP 3-D150-F
15,5	16,14	A-3	F	1	4	5/32	3 3/4	23/32	202,8	92	PHP 3-D155-F
16,0	16,64	A-3	F	1	4	5/32	3 3/4	23/32	211,6	96	PHP 3-D160-F
18,0	18,64	D-3	J	1 1/2	4 1/2	1/4	4 5/8	1/4	242,5	110	PHP 3-D180-J
20,0	20,64	D-3	J	1 1/2	4 1/2	1/4	4 5/8	1/4	264,6	120	PHP 3-D200-J
22,0	22,64	D-3	J	1 1/2	4 1/2	1/4	4 5/8	1/4	286,6	130	PHP 3-D220-J
27,0	27,64	D-3	J	1 1/2	4 1/2	1/4	4 5/8	1/4	381,4	173	PHP 3-D270-J
33,0	33,64	D-3	J	1 1/2	4 1/2	1/4	4 5/8	1/4	529,1	240	PHP 3-D330-J
40,0	40,64	D-3	J	1 1/2	4 1/2	1/4	4 5/8	1/4	661,4	300	PHP 3-D440-J

F = 4 5/8" (3-D120-F - 3-D440-J)

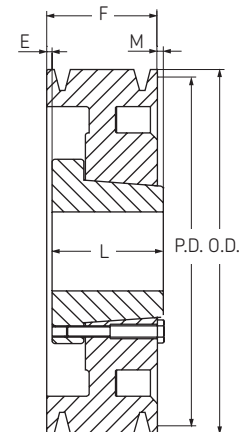


Type A

4 Groove

Pitch Diameter	O.D.	Pulley Type	Bushing	Bore		E	L	M	Weight lbs	Weight kg	Designation
				min	max						
12,0	12,64	A-2	F	1	4	31/32	3 3/4	1 11/32	183,0	83	PHP 4-D120-F
13,0	13,64	A-2	F	1	4	31/32	3 3/4	1 11/32	189,6	86	PHP 4-D130-F
13,5	14,14	A-2	F	1	4	31/32	3 3/4	1 11/32	196,2	89	PHP 4-D135-F
14,0	14,64	A-2	F	1	4	31/32	3 3/4	1 11/32	202,8	92	PHP 4-D140-F
14,5	15,14	A-3	F	1	4	31/32	3 3/4	1 11/32	209,4	95	PHP 4-D145-F
15,0	15,64	A-3	F	1	4	31/32	3 3/4	1 11/32	218,3	99	PHP 4-D150-F
15,5	16,14	A-3	F	1	4	31/32	3 3/4	1 11/32	224,9	102	PHP 4-D155-F
16,0	16,64	A-3	F	1	4	31/32	3 3/4	1 11/32	233,7	106	PHP 4-D160-F
18,0	18,64	A-3	J	1 1/2	4 1/2	1/8	4 5/8	1 5/16	264,6	120	PHP 4-D180-J
20,0	20,64	A-3	J	1 1/2	4 1/2	1/8	4 5/8	1 5/16	291,0	132	PHP 4-D200-J
22,0	22,64	A-3	J	1 1/2	4 1/2	1/8	4 5/8	1 5/16	341,7	155	PHP 4-D220-J
27,0	27,64	A-3	J	1 1/2	4 1/2	1/8	4 5/8	1 5/16	425,5	193	PHP 4-D270-J
33,0	33,64	B-3	M	2	5 1/2	11/32	6 3/4	1 1/32	617,3	280	PHP 4-D330-M
40,0	40,64	B-3	M	2	5 1/2	11/32	6 3/4	1 1/32	767,2	348	PHP 4-D440-M
48,0	48,64	B-3	M	2	5 1/2	11/32	6 3/4	1 1/32	837,8	380	PHP 4-D480-M
58,0	58,64	B-3	M	2	5 1/2	11/32	6 3/4	1 1/32	925,9	420	PHP 4-D580-M

F = 6 1/16" (4-D120-F - 4-D580-M)

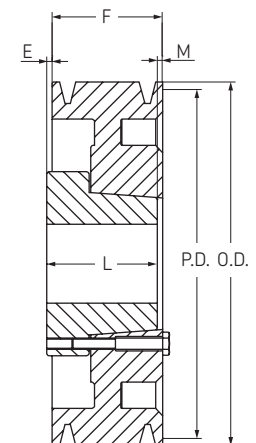


Type B

5 Groove

Pitch Diameter	O.D.	Pulley Type	Bushing	Bore		E	L	M	Weight lbs	Weight kg	Designation
				min	max						
12,0	12,64	A-2	F	1	4	1 23/32	3 3/4	2 1/32	205,0	93	PHP 5-D120-F
13,0	13,64	A-2	F	1	4	1 23/32	3 3/4	2 1/32	211,6	96	PHP 5-D130-F
13,5	14,14	A-2	F	1	4	1 23/32	3 3/4	2 1/32	224,9	102	PHP 5-D135-F
14,0	14,64	A-2	F	1	4	1 23/32	3 3/4	2 1/32	233,7	106	PHP 5-D140-F
14,5	15,14	A-3	F	1	4	1 23/32	3 3/4	2 1/32	246,9	112	PHP 5-D145-F
15,0	15,64	A-3	F	1	4	1 23/32	3 3/4	2 1/32	264,6	120	PHP 5-D150-F
15,5	16,14	A-3	F	1	4	1 23/32	3 3/4	2 1/32	275,6	125	PHP 5-D155-F
16,0	16,64	A-3	F	1	4	1 23/32	3 3/4	2 1/32	286,6	130	PHP 5-D160-F
18,0	18,64	A-3	J	1 1/2	4 1/2	17/8	4 5/8	1	330,7	150	PHP 5-D180-J
20,0	20,64	A-3	J	1 1/2	4 1/2	1/8	4 5/8	2 3/4	352,7	160	PHP 5-D200-J
22,0	22,64	A-3	J	1 1/2	4 1/2	1/8	4 5/8	2 3/4	418,9	190	PHP 5-D220-J
27,0	27,64	A-3	M	2	5 1/2	11/32	6 3/4	13/32	573,2	260	PHP 5-D270-M
33,0	33,64	A-3	M	2	5 1/2	11/32	6 3/4	13/32	705,5	320	PHP 5-D330-M
40,0	40,64	A-3	M	2	5 1/2	11/32	6 3/4	13/32	859,8	390	PHP 5-D400-M
48,0	48,64	A-3	M	2	5 1/2	11/32	6 3/4	13/32	992,1	450	PHP 5-D480-M
58,0	58,64	A-3	M	2	5 1/2	11/32	6 3/4	13/32	1102,3	500	PHP 5-D580-M

F = 7 1/2" (5-D120-F - 5-D580-M)



Type D



Classical V-belt pulleys

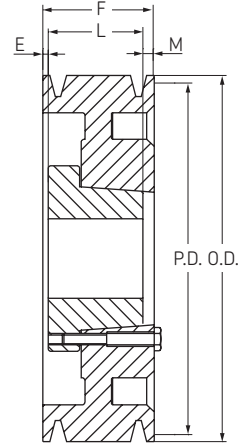
D section QD bushed

- ▶ QD Bushings
- ▶ Classical V-belt pulleys
- ▶ . Narrow wedge belt pulleys

6 Groove

Pitch Diameter	O.D.	Pulley Type	Bushing	Bore		E	L	M	Weight lbs	Weight kg	Designation
				min	max						
12,0	12,64	A-1	J	1 1/2	4 1/2	1 7/8	4 5/8	2 7/16	253,5	115	PHP 6-D120-J
13,0	13,64	A-2	J	1 1/2	4 1/2	1 7/8	4 5/8	2 7/16	275,6	125	PHP 6-D130-J
13,5	14,14	A-2	J	1 1/2	4 1/2	1 7/8	4 5/8	2 7/16	297,6	135	PHP 6-D135-J
14,0	14,64	A-2	J	1 1/2	4 1/2	1 7/8	4 5/8	2 7/16	319,7	145	PHP 6-D140-J
14,5	15,14	A-2	J	1 1/2	4 1/2	1 7/8	4 5/8	2 7/16	330,7	150	PHP 6-D145-J
15,0	15,64	A-2	J	1 1/2	4 1/2	1 7/8	4 5/8	2 7/16	352,7	160	PHP 6-D150-J
15,5	16,14	A-3	J	1 1/2	4 1/2	1 7/8	4 5/8	2 7/16	363,8	165	PHP 6-D155-J
16,0	16,64	A-3	J	1 1/2	4 1/2	1 7/8	4 5/8	2 7/16	374,8	170	PHP 6-D160-J
18,0	18,64	A-3	J	1 1/2	4 1/2	1 7/8	4 5/8	2 7/16	396,8	180	PHP 6-D180-J
20,0	20,64	A-3	J	1 1/2	4 1/2	1 7/8	4 5/8	2 7/16	474,0	215	PHP 6-D200-J
22,0	22,64	A-3	M	2	5 1/2	11/32	6 3/4	1 27/32	551,2	250	PHP 6-D220-M
27,0	27,64	A-3	M	2	5 1/2	11/32	6 3/4	1 27/32	661,4	300	PHP 6-D270-M
33,0	33,64	A-3	M	2	5 1/2	11/32	6 3/4	1 27/32	793,7	360	PHP 6-D330-M
40,0	40,64	A-3	M	2	5 1/2	11/32	6 3/4	1 27/32	970,0	440	PHP 6-D400-M
48,0	48,64	A-3	M	2	5 1/2	11/32	6 3/4	1 27/32	1234,6	560	PHP 6-D480-M
58,0	58,64	A-3	N	2 7/16	5 7/8	3/16	8 1/8	5/8	1455,1	660	PHP 6-D580-N

F = 8 15/16" (6-D120-J - 6-D580-N)



Type A

8 Groove

Pitch Diameter	O.D.	Pulley Type	Bushing	Bore		E	L	M	Weight lbs	Weight kg	Designation
				min	max						
12,0	12,64	A-1	J	1 1/2	4 1/2	2 1/8	4 5/8	5 1/16	308,6	140	PHP 8-D120-J
13,0	13,64	A-2	J	1 1/2	4 1/2	2 1/8	4 5/8	5 1/16	330,7	150	PHP 8-D130-J
13,5	14,14	A-2	J	1 1/2	4 1/2	2 1/8	4 5/8	5 1/16	352,7	160	PHP 8-D135-J
14,0	14,64	A-2	J	1 1/2	4 1/2	2 1/8	4 5/8	5 1/16	374,8	170	PHP 8-D140-J
14,5	15,14	A-2	J	1 1/2	4 1/2	2 1/8	4 5/8	5 1/16	392,4	178	PHP 8-D145-J
15,0	15,64	A-2	J	1 1/2	4 1/2	2 1/8	4 5/8	5 1/16	401,2	182	PHP 8-D150-J
15,5	16,14	A-2	J	1 1/2	4 1/2	2 1/8	4 5/8	5 1/16	418,9	190	PHP 8-D155-J
16,0	16,64	A-2	J	1 1/2	4 1/2	2 1/8	4 5/8	5 1/16	443,1	201	PHP 8-D160-J
18,0	18,64	A-3	M	2	5 1/2	2 11/32	6 3/4	2 23/32	573,2	260	PHP 8-D180-M
20,0	20,64	A-3	M	2	5 1/2	2 11/32	6 3/4	2 23/32	595,2	270	PHP 8-D200-M
22,0	22,64	A-3	M	2	5 1/2	11/32	6 3/4	4 23/32	661,4	300	PHP 8-D220-M
27,0	27,64	A-3	M	2	5 1/2	11/32	6 3/4	4 23/32	771,6	350	PHP 8-D270-M
33,0	33,64	A-3	M	2	5 1/2	11/32	6 3/4	4 23/32	992,1	450	PHP 8-D330-M
40,0	40,64	A-3	N	2 7/16	5 7/8	3/16	8 1/8	3 1/2	1212,5	550	PHP 8-D400-N
48,0	48,64	A-3	N	2 7/16	5 7/8	3/16	8 1/8	3 1/2	1587,3	720	PHP 8-D480-N
58,0	58,64	A-3	N	2 7/16	5 7/8	3/16	8 1/8	3 1/2	1984,2	900	PHP 8-D580-N

F = 11 13/16" (8-D120-J - 8-D580-N)

Classical V-belt pulleys

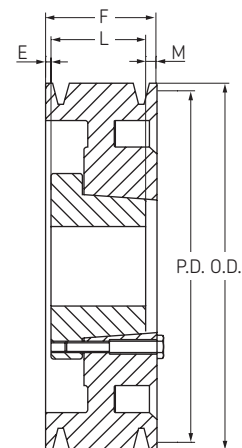
D section QD bushed



10 Groove

Pitch Diameter	O.D.	Pulley Type	Bushing	Bore		E	L	M	Weight lbs	Weight kg	Designation
				min	max						
12,0	12,64	A-1	M	2	5 1/2	2 11/32	6 3/4	5 19/23	418,9	190	PHP 10-D120-M
13,0	13,64	A-1	M	2	5 1/2	2 11/32	6 3/4	5 19/23	485,0	220	PHP 10-D130-M
13,5	14,14	A-1	M	2	5 1/2	2 11/32	6 3/4	5 19/23	529,1	240	PHP 10-D135-M
14,0	14,64	A-1	M	2	5 1/2	2 11/32	6 3/4	5 19/23	551,2	250	PHP 10-D140-M
14,5	15,14	A-2	M	2	5 1/2	2 11/32	6 3/4	5 19/23	573,2	260	PHP 10-D145-M
15,0	15,64	A-2	M	2	5 1/2	2 11/32	6 3/4	5 19/23	595,2	270	PHP 10-D150-M
15,5	16,14	A-2	M	2	5 1/2	2 11/32	6 3/4	5 19/23	617,3	280	PHP 10-D155-M
16,0	16,64	A-2	M	2	5 1/2	2 11/32	6 3/4	5 19/23	639,3	290	PHP 10-D160-M
18,0	18,64	A-2	M	2	5 1/2	2 11/32	6 3/4	5 19/23	683,4	310	PHP 10-D180-M
20,0	20,64	A-2	M	2	5 1/2	2 11/32	6 3/4	5 19/23	727,5	330	PHP 10-D200-M
22,0	22,64	A-3	M	2	5 1/2	1 11/32	6 3/4	6 19/23	771,6	350	PHP 10-D220-M
27,0	27,64	A-3	M	2	5 1/2	1 11/32	6 3/4	6 19/23	970,0	440	PHP 10-D270-N
33,0	33,64	A-3	N	2 7/16	5 7/8	1 3/16	8 1/8	5 5/8	1102,3	500	PHP 10-D330-N
40,0	40,64	A-3	N	2 7/16	5 7/8	1 3/16	8 1/8	5 5/8	1433,0	650	PHP 10-D400-N
48,0	48,64	A-3	P	2 15/16	7	1/4	9 3/8	5 1/16	2028,3	920	PHP 10-D480-P
58,0	58,64	A-3	P	2 15/16	7	1/4	9 3/8	5 1/16	2425,1	1100	PHP 10-D580-P

F = 14 11/16" (10-D120-M - 10-D580-P)



Type A

12 Groove

Pitch Diameter	O.D.	Pulley Type	Bushing	Bore		E	L	M	Weight lbs	Weight kg	Designation
				min	max						
12,0	12,64	A-1	M	2	5 1/2	3 11/32	6 3/4	7 15/32	485,0	220	PHP 12-D120-M
13,0	13,64	A-1	M	2	5 1/2	3 11/32	6 3/4	7 15/32	551,2	250	PHP 12-D130-M
13,5	14,14	A-1	M	2	5 1/2	3 11/32	6 3/4	7 15/32	595,2	270	PHP 12-D135-M
14,0	14,64	A-1	M	2	5 1/2	3 11/32	6 3/4	7 15/32	617,3	280	PHP 12-D140-M
14,5	15,14	A-1	M	2	5 1/2	3 11/32	6 3/4	7 15/32	661,4	300	PHP 12-D145-M
15,0	15,64	A-2	M	2	5 1/2	3 11/32	6 3/4	7 15/32	672,4	305	PHP 12-D150-M
15,5	16,14	A-1	M	2	5 1/2	3 11/32	6 3/4	7 15/32	683,4	310	PHP 12-D155-M
16,0	16,64	A-2	M	2	5 1/2	3 11/32	6 3/4	7 15/32	705,5	320	PHP 12-D160-M
18,0	18,64	A-2	M	2	5 1/2	3 11/32	6 3/4	7 15/32	749,6	340	PHP 12-D180-M
20,0	20,64	A-2	M	2	5 1/2	3 11/32	6 3/4	7 15/32	793,7	360	PHP 12-D200-M
22,0	22,64	A-3	M	2	5 1/2	2 11/32	6 3/4	8 15/32	881,8	400	PHP 12-D220-M
27,0	27,64	A-3	N	2 7/16	5 7/8	2 3/16	8 1/8	7 1/4	1146,4	520	PHP 12-D270-N
33,0	33,64	A-3	N	2 7/16	5 7/8	2 5/16	8 1/8	7 1/4	1466,1	665	PHP 12-D330-N
40,0	40,64	A-3	P	2 15/16	7	1/4	9 3/8	7 15/16	1918,0	870	PHP 12-D400-P
48,0	48,64	A-3	P	2 15/16	7	1/4	9 3/8	7 15/16	2403,0	1090	PHP 12-D480-P
58,0	58,64	A-3	P	2 15/16	7	1/4	9 3/8	7 15/16	2866,0	1300	PHP 12-D580-P

F = 17 9/16" (12-D120-M - 12-D580-P)



Narrow wedge belt pulleys

3V section QD bushed

► QD Bushings

► Classical V-belt pulleys

► . Narrow wedge belt pulleys

1 Groove

Pitch Diameter	O.D.	Pulley Type	Bushing	Bore		E	L	M	Weight lbs	Weight kg	Designation
				min	max						
2,15	2,20	E-1	JA	1/2	1 1/4	5/8	1	15/16	0,9	0,4	PHP 1-3V220-JA
2,30	2,35	E-1	JA	1/2	1 1/4	19/32	1	29/32	0,9	0,4	PHP 1-3V235-JA
2,45	2,50	E-1	JA	1/2	1 1/4	19/32	1	29/32	1,1	0,5	PHP 1-3V250-JA
2,60	2,65	D-1	JA	1/2	1 1/4	3/8	1	1/16	1,3	0,6	PHP 1-3V265-JA
2,75	2,80	D-1	JA	1/2	1 1/4	3/8	1	1/16	1,5	0,7	PHP 1-3V280-JA
2,95	3,00	D-1	JA	1/2	1 1/4	3/8	1	1/16	1,8	0,8	PHP 1-3V300-JA
3,10	3,15	D-1	JA	1/2	1 1/4	3/8	1	1/16	2,0	0,9	PHP 1-3V315-JA
3,30	3,35	D-1	JA	1/2	1 1/4	3/8	1	1/16	2,2	1,0	PHP 1-3V335-JA
3,60	3,65	D-1	SH	1/2	1 5/8	21/32	1	5/16	2,9	1,3	PHP 1-3V365-SH
4,07	4,12	D-1	SH	1/2	1 5/8	21/32	1	5/16	4,0	1,8	PHP 1-3V412-SH
4,45	4,50	D-1	SH	1/2	1 5/8	21/32	1	5/16	4,6	2,1	PHP 1-3V450-SH
4,65	4,70	D-1	SH	1/2	1 5/8	21/32	1	5/16	5,3	2,4	PHP 1-3V475-SH
4,95	5,00	D-1	SH	1/2	1 5/8	21/32	1	5/16	6,0	2,7	PHP 1-3V500-SH
5,25	5,30	D-1	SH	1/2	1 5/8	21/32	1	5/16	6,4	2,9	PHP 1-3V530-SH
5,55	5,60	D-2	SH	1/2	1 5/8	21/32	1	5/16	6,6	3,0	PHP 1-3V560-SH
5,95	6,00	D-2	SH	1/2	1 5/8	21/32	1	5/16	7,1	3,2	PHP 1-3V600-SH
6,45	6,50	D-2	SH	1/2	1 5/8	21/32	1	5/16	9,3	4,2	PHP 1-3V650-SH
6,85	6,90	D-3	SH	1/2	1 5/8	21/32	1	5/16	9,7	4,4	PHP 1-3V690-SH
7,95	8,00	D-3	SDS	1/2	2	21/32	1	5/16	12,8	5,8	PHP 1-3V800-SDS
10,55	10,60	D-3	SDS	1/2	2	21/32	1	5/16	17,4	7,9	PHP 1-3V1060-SDS
13,95	14,00	C-3	SK	1/2	2 5/8	25/32	1	5/16	32,6	14,8	PHP 1-3V1400-SK
18,95	19,00	C-3	SK	1/2	2 5/8	25/32	1	5/16	52,9	24,0	PHP 1-3V1900-SK

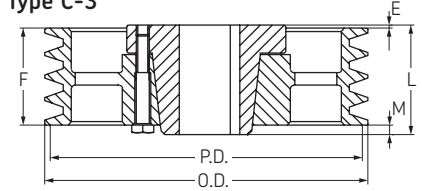
F = 11/16" (17,46 mm)

2 Groove

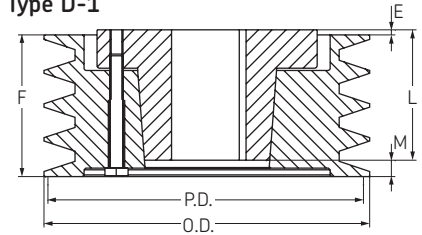
Pitch Diameter	O.D.	Pulley Type	Bushing	Bore		E	L	M	Weight lbs	Weight kg	Designation
				min	max						
2,15	2,20	E-1	JA	1/2	1 1/4	11/32	1	15/16	1,3	0,6	PHP 2-3V220-JA
2,30	2,35	E-1	JA	1/2	1 1/4	1	1	29/32	1,3	0,6	PHP 2-3V235-JA
2,45	2,50	E-1	JA	1/2	1 1/4	1	1	29/32	1,5	0,7	PHP 2-3V250-JA
2,60	2,65	D-1	JA	1/2	1 1/4	3/8	1	15/32	1,8	0,8	PHP 2-3V265-JA
2,75	2,80	D-1	JA	1/2	1 1/4	3/8	1	15/32	2,0	0,9	PHP 2-3V280-JA
2,95	3,00	D-1	JA	1/2	1 1/4	3/8	1	15/32	2,6	1,2	PHP 2-3V300-JA
3,10	3,15	D-1	JA	1/2	1 1/4	3/8	1	15/32	2,6	1,2	PHP 2-3V315-JA
3,30	3,35	D-1	SH	1/2	1 5/8	17/32	1	5/16	2,9	1,3	PHP 2-3V335-SH
3,60	3,65	D-1	SH	1/2	1 5/8	17/32	1	5/16	3,3	1,5	PHP 2-3V365-SH
4,07	4,12	D-1	SH	1/2	1 5/8	11/32	1	5/16	4,9	2,2	PHP 2-3V412-SH
4,45	4,50	D-1	SH	1/2	1 5/8	11/32	1	5/16	6,0	2,7	PHP 2-3V450-SH
4,70	4,75	D-1	SH	1/2	1 5/8	11/32	1	5/16	6,8	3,1	PHP 2-3V475-SH
4,95	5,00	D-1	SH	1/2	1 5/8	11/32	1	5/16	7,5	3,4	PHP 2-3V500-SH
5,25	5,30	D-1	SH	1/2	1 5/8	11/32	1	5/16	8,6	3,9	PHP 2-3V530-SH
5,55	5,60	D-2	SH	1/2	1 5/8	11/32	1	5/16	8,8	4,0	PHP 2-3V560-SH
5,95	6,00	D-2	SH	1/2	1 5/8	11/32	1	5/16	9,7	4,4	PHP 2-3V600-SH
6,45	6,50	D-2	SDS	1/2	2	11/32	1	5/16	13,2	6,0	PHP 2-3V650-SDS
6,85	6,90	D-2	SDS	1/2	2	11/32	1	5/16	16,5	7,5	PHP 2-3V690-SDS
7,95	8,00	D-3	SDS	1/2	2	11/32	1	5/16	18,7	8,5	PHP 2-3V800-SDS
10,55	10,60	C-3	SK	1/2	2 5/8	17/32	1	5/16	27,6	12,5	PHP 2-3V1060-SK
13,95	14,00	C-3	SK	1/2	2 5/8	17/32	1	5/16	43,0	19,5	PHP 2-3V1400-SK
18,95	19,00	C-3	SK	1/2	2 5/8	17/32	1	5/16	59,5	27,0	PHP 2-3V1900-SK
24,95	25,00	C-3	SF	1/2	2 15/16	19/32	2	1/16	83,8	38,0	PHP 2-3V2500-SF

F = 1 3/32" (27,78 mm)

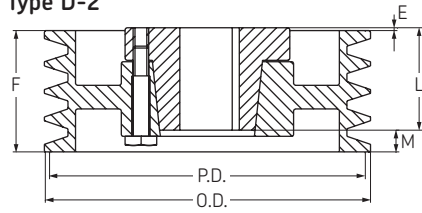
Type C-3



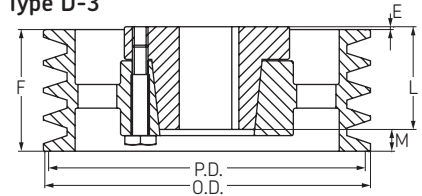
Type D-1



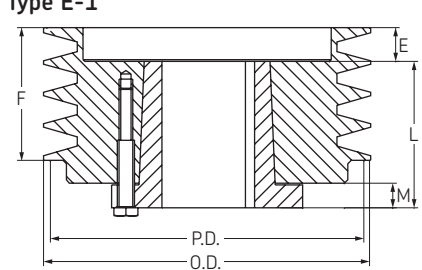
Type D-2



Type D-3



Type E-1





Narrow wedge belt pulleys

3V section QD bushed



3 Groove

Pitch Diameter	O.D.	Pulley Type	Bushing	Bore		E	L	M	Weight lbs	Weight kg	Designation
				min	max						
2,45	2,50	E-1	JA	1/2	1 1/4	1 13/32	1	29/32	1,8	0,8	PHP 3-3V250-JA
2,60	2,65	D-1	JA	1/2	1 1/4	3/8	1	7/8	2,2	1,0	PHP 3-3V265-JA
2,75	2,80	D-1	JA	1/2	1 1/4	3/8	1	7/8	3,1	1,4	PHP 3-3V280-JA
2,95	3,00	E-1	SH	1/2	1 5/8	1 5/32	1 5/16	31/32	3,7	1,7	PHP 3-3V300-SH
3,10	3,15	E-1	SH	1/2	1 5/8	1 5/32	1 5/16	31/32	4,0	1,8	PHP 3-3V315-SH
3,30	3,35	D-1	SH	1/2	1 5/8	17/32	1 5/16	23/32	4,2	1,9	PHP 3-3V335-SH
3,60	3,65	D-1	SH	1/2	1 5/8	17/32	1 5/16	23/32	5,1	2,3	PHP 3-3V365-SH
4,07	4,12	A-1	SH	1/2	1 5/8	1/32	1 5/16	5/32	6,2	2,8	PHP 3-3V412-SH
4,45	4,50	A-1	SDS	1/2	2	1/32	1 5/16	5/32	7,7	3,5	PHP 3-3V450-SDS
4,70	4,75	A-1	SDS	1/2	2	1/32	1 5/16	5/32	8,8	4,0	PHP 3-3V475-SDS
4,95	5,00	A-1	SDS	1/2	2	1/32	1 5/16	5/32	9,9	4,5	PHP 3-3V500-SDS
5,25	5,30	A-1	SDS	1/2	2	1/32	1 5/16	5/32	11,5	5,2	PHP 3-3V530-SDS
5,55	5,60	A-1	SDS	1/2	2	1/32	1 5/16	5/32	13,2	6,0	PHP 3-3V560-SDS
5,95	6,00	A-2	SDS	1/2	2	1/32	1 5/16	5/32	15,4	7,0	PHP 3-3V600-SDS
6,45	6,50	A-2	SDS	1/2	2	1/32	1 5/16	5/32	17,9	8,1	PHP 3-3V650-SDS
6,85	6,90	A-2	SDS	1/2	2	1/32	1 5/16	5/32	19,6	8,9	PHP 3-3V690-SDS
7,95	8,00	D-2	SK	1/2	2 5/8	17/32	1 5/16	3/32	24,9	11,3	PHP 3-3V800-SK
10,55	10,60	D-3	SK	1/2	2 5/8	17/32	1 5/16	3/32	30,9	14,0	PHP 3-3V1060-SK
13,95	14,00	D-3	SK	1/2	2 5/8	17/32	1 5/16	3/32	47,6	21,6	PHP 3-3V1400-SK
15,95	16,00	D-3	SK	1/2	2 5/8	17/32	1 5/16	3/32	55,6	25,2	PHP 3-3V1600-SK
18,95	19,00	D-3	SF	1/2	2 15/16	19/32	2 1/16	1/32	70,8	32,1	PHP 3-3V1900-SF
24,95	25,00	D-3	SF	1/2	2 15/16	19/32	2 1/16	1/32	110,2	50,0	PHP 3-3V2500-SF
33,45	33,50	D-3	SF	7/8	3 1/2	19/32	2 1/16	1/32	172,0	78,0	PHP 3-3V3350-SF

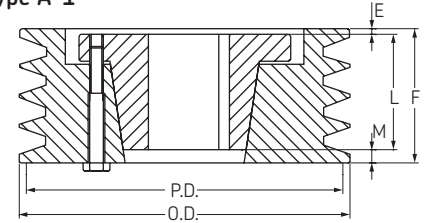
F = 1 1/2" (38,10 mm)

4 Groove

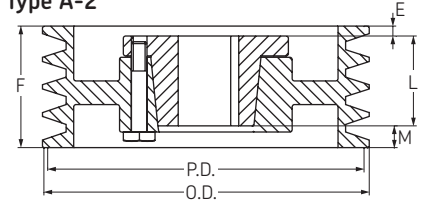
Pitch Diameter	O.D.	Pulley Type	Bushing	Bore		E	L	M	Weight lbs	Weight kg	Designation
				min	max						
2,60	2,65	D-1	JA	1/2	1 1/4	3/8	1	19/32	2,9	1,3	PHP 4-3V265-JA
2,75	2,80	D-1	JA	1/2	1 1/4	3/8	1	19/32	3,7	1,7	PHP 4-3V280-JA
2,95	3,00	E-1	SH	1/2	1 5/8	1/2	1 5/16	29/32	4,4	2,0	PHP 4-3V300-SH
3,10	3,15	E-1	SH	1/2	1 5/8	11/2	1 5/16	29/32	4,9	2,2	PHP 4-3V315-SH
3,30	3,35	D-1	SH	1/2	1 5/8	17/32	1 5/16	1 1/8	5,1	2,3	PHP 4-3V335-SH
3,60	3,65	D-1	SH	1/2	1 5/8	17/32	1 5/16	1 1/8	6,2	2,8	PHP 4-3V365-SH
4,07	4,12	A-1	SH	1/2	1 5/8	5/32	1 5/16	7/16	7,5	3,4	PHP 4-3V412-SH
4,45	4,50	A-1	SDS	1/2	2	5/32	1 5/16	7/16	8,8	4,0	PHP 4-3V450-SDS
4,70	4,75	A-1	SDS	1/2	2	5/32	1 5/16	7/16	10,1	4,6	PHP 4-3V475-SDS
4,95	5,00	A-1	SDS	1/2	2	5/32	1 5/16	7/16	11,5	5,2	PHP 4-3V500-SDS
5,25	5,30	A-1	SDS	1/2	2	5/32	1 5/16	7/16	12,8	5,8	PHP 4-3V530-SDS
5,55	5,60	A-1	SDS	1/2	2	5/32	1 5/16	7/16	15,0	6,8	PHP 4-3V560-SDS
5,95	6,00	D-1	SK	1/2	2 5/8	5/32	1 5/16	1/8	18,3	8,3	PHP 4-3V600-SK
6,45	6,50	D-1	SK	1/2	2 5/8	5/32	1 5/16	1/8	22,0	10,0	PHP 4-3V650-SK
6,85	6,90	D-1	SK	1/2	2 5/8	5/32	1 5/16	1/8	26,2	11,9	PHP 4-3V690-SK
7,95	8,00	D-2	SK	1/2	2 5/8	5/32	1 5/16	1/8	28,7	13,0	PHP 4-3V800-SK
10,55	10,60	D-3	SK	1/2	2 5/8	5/32	1 5/16	1/8	36,4	16,5	PHP 4-3V1060-SK
13,95	14,00	D-3	SK	1/2	2 5/8	5/32	1 5/16	1/8	49,6	22,5	PHP 4-3V1400-SK
15,95	16,00	D-3	SK	1/2	2 5/8	5/32	1 5/16	1/8	61,3	27,8	PHP 4-3V1600-SK
18,95	19,00	D-3	SF	1/2	2 15/16	7/32	2 1/16	1/16	77,2	35,0	PHP 4-3V1900-SF
24,95	25,00	D-3	SF	1/2	2 15/16	7/32	2 1/16	1/16	125,7	57,0	PHP 4-3V2500-SF
33,45	33,50	C-3	E	7/8	3 1/2	21/32	2 3/4	3/16	185,2	84,0	PHP 4-3V3350-E

F = 1 29/32" (48,42 mm)

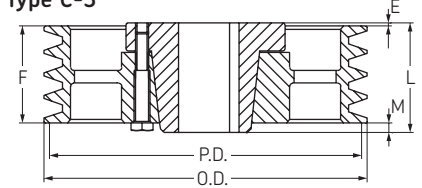
Type A-1



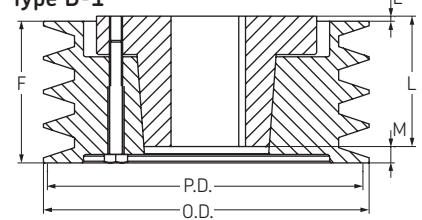
Type A-2



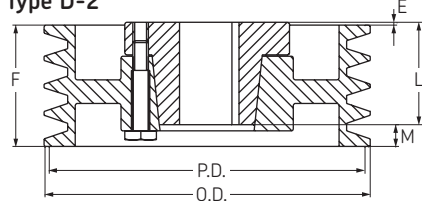
Type C-3



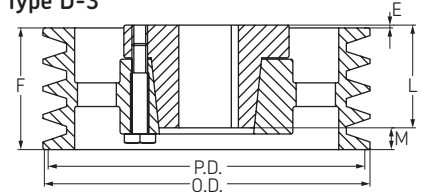
Type D-1



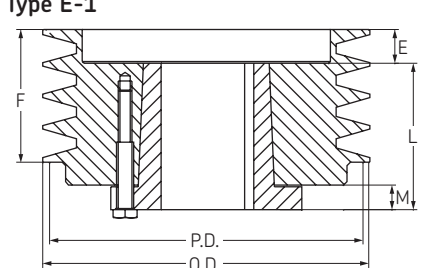
Type D-2



Type D-3



Type E-1





Narrow wedge belt pulleys

3V section QD bushed

▶ QD Bushings

▶ Classical V-belt pulleys

▶ . Narrow wedge belt pulleys

5 Groove

Pitch Diameter	O.D.	Pulley Type	Bushing	Bore		E	L	M	Weight lbs	Weight kg	Designation
				min	max						
4,70	4,75	A-1	SDS	1/2	2	5/32	1 15/16	27/32	11,2	5,1	PHP 5-3V475-SDS
4,95	5,00	A-1	SDS	1/2	2	5/32	1 15/16	27/32	12,6	5,7	PHP 5-3V500-SDS
5,25	5,30	A-1	SK	1/2	2 5/8	5/32	1 15/16	7/32	14,3	6,5	PHP 5-3V530-SK
5,55	5,60	A-1	SK	1/2	2 5/8	5/32	1 15/16	7/32	16,5	7,5	PHP 5-3V560-SK
5,95	6,00	A-1	SK	1/2	2 5/8	5/32	1 15/16	7/32	19,6	8,9	PHP 5-3V600-SK
6,45	6,50	A-2	SK	1/2	2 5/8	5/32	1 15/16	7/32	23,4	10,6	PHP 5-3V650-SK
6,85	6,90	A-2	SK	1/2	2 5/8	5/32	1 15/16	7/32	28,2	12,8	PHP 5-3V690-SK
7,95	8,00	A-2	SK	1/2	2 5/8	5/32	1 15/16	7/32	30,4	13,8	PHP 5-3V800-SK
10,55	10,60	A-3	SK	1/2	2 5/8	5/32	1 15/16	7/32	37,5	17,0	PHP 5-3V1060-SK
13,95	14,00	A-3	SF	1/2	2 15/16	1/32	2 1/16	7/32	57,3	26,0	PHP 5-3V1400-SF
18,95	19,00	A-3	SF	1/2	2 15/16	1/32	2 1/16	7/32	90,4	41,0	PHP 5-3V1900-SF
24,95	25,00	D-3	E"	7/8	3 1/2	17/32	2 3/4	3/32	138,9	63,0	PHP 5-3V2500-E
33,45	33,50	D-3	E	7/8	3 1/2	17/32	2 3/4	3/32	209,4	95,0	PHP 5-3V3350-E

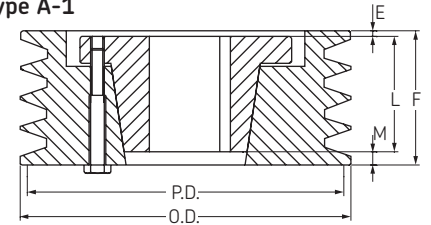
F = 2 5/16" (58,74 mm)

6 Groove

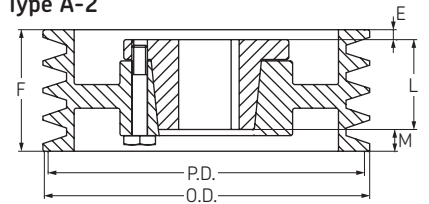
Pitch Diameter	O.D.	Pulley Type	Bushing	Bore		E	L	M	Weight lbs	Weight kg	Designation
				min	max						
4,70	4,75	D-1	SK	1/2	2 5/8	21/32	1 15/16	1 7/16	13,2	6,0	PHP 6-3V475-SK
4,95	5,00	D-1	SK	1/2	2 5/8	21/32	1 15/16	1 7/16	13,9	6,3	PHP 6-3V500-SK
5,25	5,30	A-1	SK	1/2	2 5/8	17/32	1 15/16	1/4	15,2	6,9	PHP 6-3V530-SK
5,55	5,60	A-1	SK	1/2	2 5/8	17/32	1 15/16	1/4	18,7	8,5	PHP 6-3V560-SK
5,95	6,00	A-1	SK	1/2	2 5/8	17/32	1 15/16	1/4	21,6	9,8	PHP 6-3V600-SK
6,45	6,50	A-1	SK	1/2	2 5/8	17/32	1 15/16	1/4	25,1	11,4	PHP 6-3V650-SK
6,85	6,90	A-1	SK	1/2	2 5/8	17/32	1 15/16	1/4	29,5	13,4	PHP 6-3V690-SK
7,95	8,00	A-2	SF	1/2	2 15/16	3/32	1 15/16	11/16	33,1	15,0	PHP 6-3V800-SK
10,55	10,60	A-3	SF	1/2	2 15/16	1/32	2 1/16	5/8	49,8	22,6	PHP 6-3V1060-SF
13,95	14,00	A-3	E	7/8	3 1/2	1/32	2 1/16	5/8	65,0	29,5	PHP 6-3V1400-SF
18,95	19,00	D-3	E	7/8	3 1/2	5/32	2 3/4	1/8	97,0	44,0	PHP 6-3V1900-E
24,95	25,00	D-3	E	7/8	3 1/2	5/32	2 3/4	1/8	143,3	65,0	PHP 6-3V2500-E
33,45	33,50	D-3	E	7/8	3 1/2	5/32	2 3/4	1/8	222,7	101,0	PHP 6-3V3350-E

F = 2 23/32" (69,06 mm)

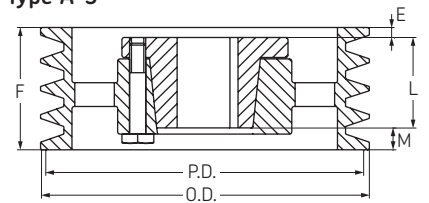
Type A-1



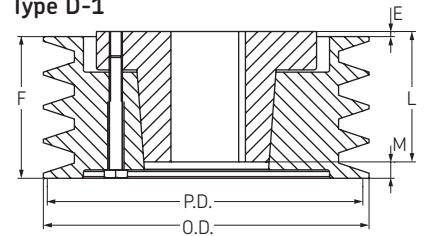
Type A-2



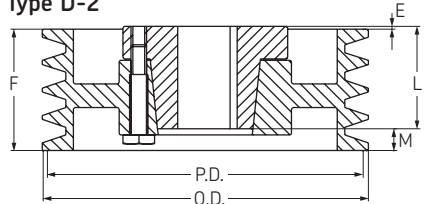
Type A-3



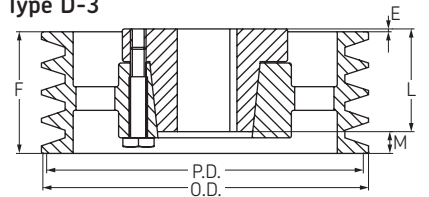
Type D-1



Type D-2



Type D-3





Narrow wedge belt pulleys

3V section QD bushed

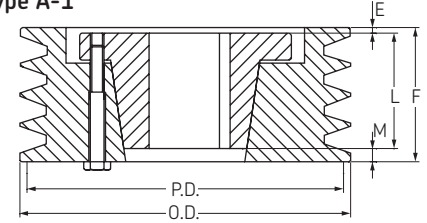


8 Groove

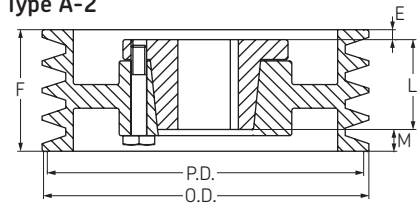
Pitch Diameter	O.D.	Pulley Type	Bushing	Bore		E	L	M	Weight lbs	Weight kg	Designation
				min	max						
4,70	4,75	D-1	SK	1/2	2 5/8	21/32	1 15/16	2 1/4	15,9	7,2	PHP 8-3V475-SK
4,95	5,00	D-1	SK	1/2	2 5/8	21/32	1 15/16	2 3/4	17,2	7,8	PHP 8-3V500-SK
5,25	5,30	A-1	SK	1/2	2 5/8	17/32	1 15/16	1 1/16	20,5	9,3	PHP 8-3V530-SK
5,55	5,60	A-1	SK	1/2	2 5/8	17/32	1 15/16	1 1/16	23,1	10,5	PHP 8-3V560-SK
5,95	6,00	A-1	SK	1/2	2 5/8	17/32	1 15/16	1 1/16	27,6	12,5	PHP 8-3V600-SK
6,45	6,50	A-1	SK	1/2	2 5/8	17/32	1 15/16	1 1/16	35,3	16,0	PHP 8-3V650-SK
6,85	6,90	A-1	SK	1/2	2 5/8	17/32	1 15/16	1 1/16	39,7	18,0	PHP 8-3V690-SK
7,95	8,00	A-1	SF	1/2	2 15/16	9/32	2 1/16	13/16	46,3	21,0	PHP 8-3V800-SF
10,55	10,60	A-2	SF	1/2	2 15/16	9/32	2 1/16	13/16	56,2	25,5	PHP 8-3V1060-SF
13,95	14,00	A-3	E	7/8	3 1/2	3/32	2 3/4	11/16	84,9	38,5	PHP 8-3V1400-E
18,95	19,00	A-3	E	7/8	3 1/2	3/32	2 3/4	11/16	119,0	54,0	PHP 8-3V1900-E
24,95	25,00	A-3	E	7/8	3 1/2	3/32	2 3/4	11/16	176,4	80,0	PHP 8-3V2500-E
33,45	33,50	D-3	F	1	4	9/32	3 3/4	11/16	70,5	32,0	PHP 8-3V3350-F

F = 3 17/32" (89,70 mm)

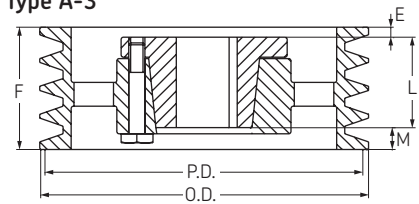
Type A-1



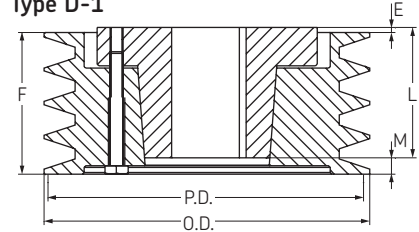
Type A-2



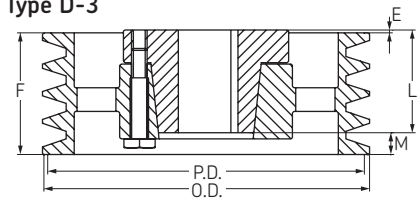
Type A-3



Type D-1



Type D-3



10 Groove

Pitch Diameter	O.D.	Pulley Type	Bushing	Bore		E	L	M	Weight lbs	Weight kg	Designation
				min	max						
4,70	4,75	D-1	SK	1/2	2 5/8	21/32	1 15/16	3 1/16	18,3	8,3	PHP 10-3V475-SK
4,95	5,00	D-1	SK	1/2	2 5/8	21/32	1 15/16	3 1/16	20,9	9,5	PHP 10-3V500-SK
5,25	5,30	A-1	SK	1/2	2 5/8	21/32	1 15/16	1 3/4	22,5	10,2	PHP 10-3V530-SK
5,55	5,60	A-1	SK	1/2	2 5/8	21/32	1 15/16	1 3/4	25,1	11,4	PHP 10-3V560-SK
5,95	6,00	A-1	SK	1/2	2 5/8	21/32	1 15/16	1 3/4	32,0	14,5	PHP 10-3V600-SK
6,45	6,50	A-1	SK	1/2	2 5/8	21/32	1 15/16	1 3/4	38,6	17,5	PHP 10-3V650-SK
6,85	6,90	A-1	SK	1/2	2 5/8	21/32	1 15/16	1 3/4	44,1	20,0	PHP 10-3V690-SK
7,95	8,00	A-1	SF	1/2	2 15/16	21/32	2 1/16	1 3/8	52,9	24,0	PHP 10-3V800-SF
10,55	10,60	A-2	F	7/8	3 1/2	3/32	2 3/4	1 1/2	66,6	30,2	PHP 10-3V1060-E
13,95	14,00	A-3	E	7/8	3 1/2	3/32	2 3/4	1 1/2	94,4	42,8	PHP 10-3V1400-E
18,95	19,00	A-3	E	7/8	3 1/2	3/32	2 3/4	1 1/2	141,1	64,0	PHP 10-3V1900-E
24,95	25,00	D-3	F	1	4	1/32	3 3/4	5/8	218,3	99,0	PHP 10-3V2500-F
33,45	33,50	D-3	F	1	4	1/32	3 3/4	5/8	348,3	158,0	PHP 10-3V3350-F

F = 4 11/32" (110,33 mm)



Narrow wedge belt pulleys

5V section QD bushed

▶ QD Bushings

▶ Classical V-belt pulleys

▶ . Narrow wedge belt pulleys

2 Groove

Pitch Diameter	O.D.	Pulley Type	Bushing	Bore		E	L	M	Weight lbs	Weight kg	Designation
				min	max						
4,30	4,40	D-1	SH	1/2	1 5/8	11/32	1 5/16	23/32	12,8	5,8	PHP 2-5V440-SH
4,55	4,65	E-1	SDS	1/2	2	27/32	1 5/16	15/32	14,6	6,6	PHP 2-5V465-SDS
4,80	4,90	A-1	SDS	1/2	2	1/32	1 5/16	11/32	15,0	6,8	PHP 2-5V490-SDS
5,10	5,20	A-1	SDS	1/2	2	1/32	1 5/16	11/32	15,4	7,0	PHP 2-5V520-SDS
5,40	5,50	A-1	SDS	1/2	2	1/32	1 5/16	11/32	15,9	7,2	PHP 2-5V550-SDS
5,80	5,90	A-1	SDS	1/2	2	1/32	1 5/16	11/32	16,8	7,6	PHP 2-5V590-SDS
6,20	6,30	D-1	SK	1/2	2 5/8	11/32	1 15/16	3/32	20,7	9,4	PHP 2-5V630-SK
6,60	6,70	D-1	SK	1/2	2 5/8	11/32	1 15/16	3/32	23,1	10,5	PHP 2-5V670-SK
7,00	7,10	D-1	SK	1/2	2 5/8	11/32	1 15/16	3/32	25,4	11,5	PHP 2-5V710-SK
7,40	7,50	D-1	SK	1/2	2 5/8	11/32	1 15/16	3/32	27,6	12,5	PHP 2-5V750-SK
7,90	8,00	D-2	SK	1/2	2 5/8	11/32	1 15/16	3/32	28,7	13,0	PHP 2-5V800-SK
8,40	8,50	D-2	SK	1/2	2 5/8	11/32	1 15/16	3/32	30,9	14,0	PHP 2-5V850-SK
8,90	9,00	D-3	SK	1/2	2 5/8	11/32	1 15/16	3/32	33,5	15,2	PHP 2-5V900-SK
9,15	9,25	D-3	SK	1/2	2 5/8	11/32	1 5/16	3/32	33,7	15,3	PHP 2-5V925-SK
9,65	9,75	D-3	SK	1/2	2 5/8	11/32	1 15/16	3/32	34,2	15,5	PHP 2-5V975-SK
10,20	10,30	D-3	SK	1/2	2 5/8	11/32	1 15/16	3/32	34,2	15,5	PHP 2-5V1030-SK
10,80	10,90	D-3	SK	1/2	2 5/8	11/32	1 15/16	3/32	36,4	16,5	PHP 2-5V1090-SK
11,20	11,30	D-3	SK	1/2	2 5/8	11/32	1 15/16	3/32	39,2	17,8	PHP 2-5V1130-SK
11,70	11,80	D-3	SK	1/2	2 5/8	11/32	1 15/16	3/32	41,9	19,0	PHP 2-5V1180-SK
12,40	12,50	D-3	SF	1/2	2 15/16	13/32	2 1/16	1/32	46,3	21,0	PHP 2-5V1250-SF
13,10	13,20	D-3	SF	1/2	2 15/16	13/32	2 1/16	1/32	49,8	22,6	PHP 2-5V1320-SF
13,90	14,00	D-3	SF	1/2	2 15/16	13/32	2 1/16	1/32	55,8	25,3	PHP 2-5V1400-SF
14,90	15,00	D-3	SF	1/2	2 15/16	13/32	2 1/16	1/32	60,4	27,4	PHP 2-5V1500-SF
15,90	16,00	D-3	SF	1/2	2 15/16	13/32	2 1/16	1/32	64,4	29,2	PHP 2-5V1600-SF
18,60	18,70	D-3	SF	1/2	2 15/16	13/32	2 1/16	1/32	79,4	36,0	PHP 2-5V1870-SF
21,10	21,20	D-3	SF	1/2	2 15/16	13/32	1 1/16	1/32	94,8	43,0	PHP 2-5V2120-SF
23,50	23,60	C-3	E	7/8	3 1/2	29/32	2 3/4	5/32	121,3	55,0	PHP 2-5V2360-E
27,90	28,00	C-3	E	7/8	3 1/2	29/32	2 3/4	5/32	147,7	67,0	PHP 2-5V2800-E

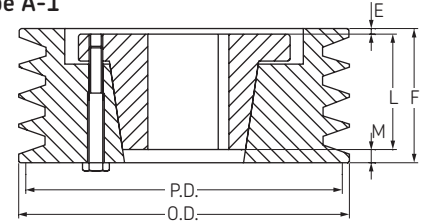
F = 1 11/16" (42,86 mm)

3 Groove

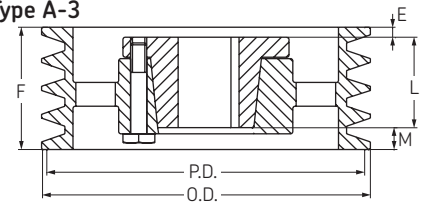
Pitch Diameter	O.D.	Pulley Type	Bushing	Bore		E	L	M	Weight lbs	Weight kg	Designation
				min	max						
4,30	4,40	E-1	SDS	1/2	2	1 23/32	1 5/16	21/32	14,3	6,5	PHP 3-5V440-SDS
4,55	4,65	E-1	SDS	1/2	2	1 23/32	1 5/16	21/32	16,8	7,6	PHP 3-5V465-SDS
4,80	4,90	A-1	SDS	1/2	2	13/32	1 5/16	21/32	17,2	7,8	PHP 3-5V490-SDS
5,10	5,20	A-1	SDS	1/2	2	13/32	1 5/16	21/32	17,6	8,0	PHP 3-5V520-SDS
5,40	5,50	A-1	SDS	1/2	2	13/32	1 5/16	21/32	18,1	8,2	PHP 3-5V550-SDS
5,80	5,90	A-1	SDS	1/2	2	13/32	1 5/16	21/32	19,0	8,6	PHP 3-5V590-SDS
6,20	6,30	A-1	SK	1/2	2 5/8	9/32	1 15/16	5/32	22,9	10,4	PHP 3-5V630-SK
6,60	6,70	A-1	SK	1/2	2 5/8	9/32	1 15/16	5/32	25,8	11,7	PHP 3-5V670-SK
7,00	7,10	A-1	SF	1/2	2 15/16	5/32	2 1/16	5/32	28,0	12,7	PHP 3-5V710-SF
7,40	7,50	A-1	SF	1/2	2 15/16	5/32	2 1/16	5/32	33,1	15,0	PHP 3-5V750-SF
7,90	8,00	A-1	SF	1/2	2 15/16	5/32	2 1/16	5/32	36,4	16,5	PHP 3-5V800-SF
8,40	8,50	A-3	SF	1/2	2 15/16	5/32	2 1/16	5/32	39,7	18,0	PHP 3-5V850-SF
8,90	9,00	A-3	SF	1/2	2 15/16	5/32	2 1/16	5/32	43,7	19,8	PHP 3-5V900-SF
9,15	9,25	A-3	SF	1/2	2 15/16	5/32	2 1/16	5/32	45,6	20,7	PHP 3-5V925-SF
9,65	9,75	A-3	SF	1/2	2 15/16	5/32	2 1/16	5/32	49,8	22,6	PHP 3-5V975-SF
10,20	10,30	A-3	SF	1/2	2 15/16	5/32	2 1/16	5/32	54,2	24,6	PHP 3-5V1030-SF
10,80	10,90	A-3	SF	1/2	2 15/16	5/32	2 1/16	5/32	58,9	26,7	PHP 3-5V1090-SF
11,20	11,30	A-3	SF	1/2	2 15/16	5/32	2 1/16	5/32	62,2	28,2	PHP 3-5V1130-SF
11,70	11,80	D-3	SF	1/2	2 15/16	5/32	2 1/16	5/32	65,5	29,7	PHP 3-5V1180-SF
12,40	12,50	D-3	E	7/8	3 1/2	13/32	2 3/4	1/32	75,0	34,0	PHP 3-5V1250-E
13,10	13,20	D-3	E	7/8	3 1/2	13/32	2 3/4	1/32	77,2	35,0	PHP 3-5V1320-E
13,90	14,00	D-3	E	7/8	3 1/2	13/32	2 3/4	1/32	81,6	37,0	PHP 3-5V1400-E
14,90	15,00	D-3	E	7/8	3 1/2	13/32	2 3/4	1/32	83,8	38,0	PHP 3-5V1500-E
15,90	16,00	D-3	E	7/8	3 1/2	13/32	2 3/4	1/32	86,4	39,2	PHP 3-5V1600-E
18,60	18,70	D-3	E	7/8	3 1/2	13/32	2 3/4	1/32	104,1	47,2	PHP 3-5V1870-E
21,10	21,20	D-3	E	7/8	3 1/2	13/32	2 3/4	1/32	121,3	55,0	PHP 3-5V2120-E
23,50	23,60	D-3	E	7/8	3 1/2	13/32	2 3/4	1/32	154,8	70,2	PHP 3-5V2360-E
27,90	28,00	D-3	E	7/8	3 1/2	13/32	2 3/4	1/32	190,7	86,5	PHP 3-5V2800-E
31,40	31,50	C-3	E	1	4	25/32	3 3/4	19/32	255,7	116,0	PHP 3-5V3150-F
37,40	37,50	C-3	E	1	4	25/32	3 3/4	19/32	310,9	141,0	PHP 3-5V3750-F
49,90	50,00	C-3	E	1	4	25/32	3 3/4	19/32	465,2	211,0	PHP 3-5V5000-F

F = 2 3/8" (60,33 mm)

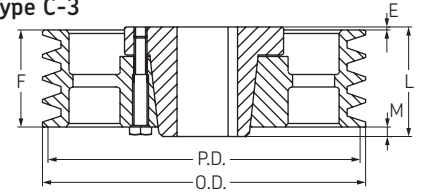
Type A-1



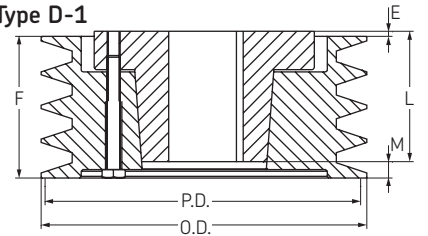
Type A-3



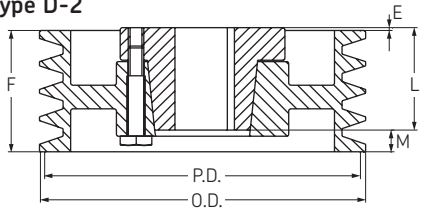
Type C-3



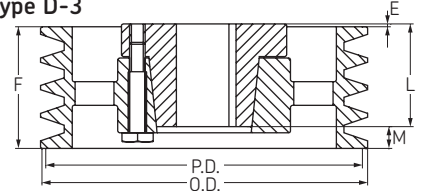
Type D-1



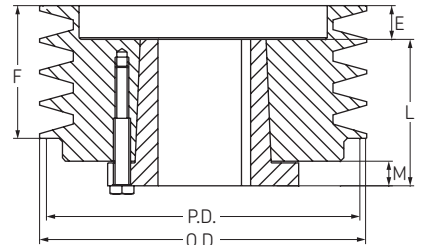
Type D-2



Type D-3



Type E-1





Narrow wedge belt pulleys

5V section QD bushed

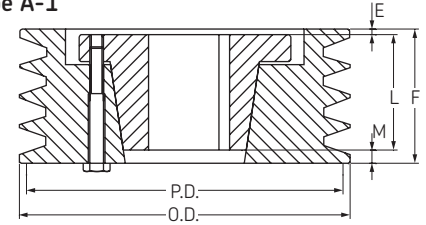


4 Groove

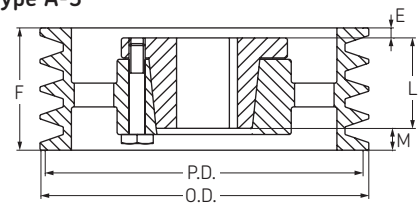
Pitch Diameter	O.D.	Pulley Type	Bushing	Bore		E	L	M	Weight lbs	Weight kg	Designation
				min	max						
4,30	4,40	E-1	SD	1/2	2	1 2 ⁹ / ₃₂	1 13 ¹ / ₁₆	21 ¹ / ₃₂	16,5	7,5	PHP 4-5V440-SD
4,55	4,65	E-1	SD	1/2	2	1 2 ⁹ / ₃₂	1 13 ¹ / ₁₆	21 ¹ / ₃₂	17,6	8,0	PHP 4-5V465-SD
4,80	4,90	A-1	SD	1/2	2	21 ¹ / ₃₂	1 13 ¹ / ₁₆	19 ¹ / ₃₂	18,7	8,5	PHP 4-5V490-SD
5,10	5,20	A-1	SD	1/2	2	21 ¹ / ₃₂	1 13 ¹ / ₁₆	19 ¹ / ₃₂	19,4	8,8	PHP 4-5V520-SD
5,40	5,50	A-1	SD	1/2	2	21 ¹ / ₃₂	1 13 ¹ / ₁₆	19 ¹ / ₃₂	20,5	9,3	PHP 4-5V550-SD
5,80	5,90	A-1	SD	1/2	2	21 ¹ / ₃₂	1 13 ¹ / ₁₆	19 ¹ / ₃₂	22,3	10,1	PHP 4-5V590-SD
6,20	6,30	A-1	SK	1/2	2 5 ⁸ / ₁₆	17 ¹ / ₃₂	1 15 ¹ / ₁₆	19 ¹ / ₃₂	26,0	11,8	PHP 4-5V630-SK
6,60	6,70	A-1	SK	1/2	2 5 ⁸ / ₁₆	17 ¹ / ₃₂	1 15 ¹ / ₁₆	19 ¹ / ₃₂	30,0	13,6	PHP 4-5V670-SK
7,00	7,10	A-1	SF	1/2	2 15 ¹ / ₁₆	7 ¹ / ₃₂	2 1 ¹ / ₁₆	25 ¹ / ₃₂	32,8	14,9	PHP 4-5V710-SF
7,40	7,50	A-1	SF	1/2	2 15 ¹ / ₁₆	7 ¹ / ₃₂	2 1 ¹ / ₁₆	25 ¹ / ₃₂	37,5	17,0	PHP 4-5V750-SF
7,90	8,00	B-1	E	7/8	3 1/2	11 ¹ / ₃₂	2 3/4	1/32	41,4	18,8	PHP 4-5V800-E
8,40	8,50	B-1	E	7/8	3 1/2	11 ¹ / ₃₂	2 3/4	1/32	48,3	21,9	PHP 4-5V850-E
8,90	9,00	B-1	E	7/8	3 1/2	11 ¹ / ₃₂	2 3/4	1/32	53,4	24,2	PHP 4-5V900-E
9,15	9,25	B-1	E	7/8	3 1/2	11 ¹ / ₃₂	2 3/4	1/32	56,9	25,8	PHP 4-5V925-E
9,65	9,75	B-1	E	7/8	3 1/2	11 ¹ / ₃₂	2 3/4	1/32	62,2	28,2	PHP 4-5V975-E
10,20	10,30	B-1	E	7/8	3 1/2	11 ¹ / ₃₂	2 3/4	1/32	65,7	29,8	PHP 4-5V1030-E
10,80	10,90	B-2	E	7/8	3 1/2	11 ¹ / ₃₂	2 3/4	1/32	67,5	30,6	PHP 4-5V1090-E
11,20	11,30	A-3	E	7/8	3 1/2	9 ¹ / ₃₂	2 3/4	1/32	70,3	31,9	PHP 4-5V1130-E
11,70	11,80	B-2	E	7/8	3 1/2	11 ¹ / ₃₂	2 3/4	1/32	72,8	33,0	PHP 4-5V1180-E
12,40	12,50	A-3	E	7/8	3 1/2	9 ¹ / ₃₂	2 3/4	1/32	80,2	36,4	PHP 4-5V1250-E
13,10	13,20	A-3	E	7/8	3 1/2	9 ¹ / ₃₂	2 3/4	1/32	84,2	38,2	PHP 4-5V1320-E
13,90	14,00	A-3	E	7/8	3 1/2	9 ¹ / ₃₂	2 3/4	1/32	88,6	40,2	PHP 4-5V1400-E
14,90	15,00	A-3	E	7/8	3 1/2	9 ¹ / ₃₂	2 3/4	1/32	95,9	43,5	PHP 4-5V1500-E
15,90	16,00	A-3	E	7/8	3 1/2	9 ¹ / ₃₂	2 3/4	1/32	98,3	44,6	PHP 4-5V1600-E
18,60	18,70	A-3	E	7/8	3 1/2	3 ¹ / ₃₂	2 3/4	1/32	118,2	53,6	PHP 4-5V1870-E
21,10	21,20	A-3	E	7/8	3 1/2	3 ¹ / ₃₂	2 3/4	1/32	137,8	62,5	PHP 4-5V2120-E
23,50	23,60	C-3	F	1	4	15 ¹ / ₃₂	3 3/4	7 ¹ / ₃₂	184,1	83,5	PHP 4-5V2360-F
27,90	28,00	C-3	F	1	4	15 ¹ / ₃₂	3 3/4	7 ¹ / ₃₂	277,8	126,0	PHP 4-5V2800-F
31,40	31,50	C-3	F	1	4	15 ¹ / ₃₂	3 3/4	7 ¹ / ₃₂	326,3	148,0	PHP 4-5V3150-F
37,40	37,50	C-3	F	1	4	15 ¹ / ₃₂	3 3/4	7 ¹ / ₃₂	374,8	170,0	PHP 4-5V3750-F
49,90	50,00	C-3	J	1 1/2	4 1/2	3/4	4 5/8	13 ¹ / ₁₆	546,7	248,0	PHP 4-5V5000-J

F = 3 1/16" (77,79 mm)

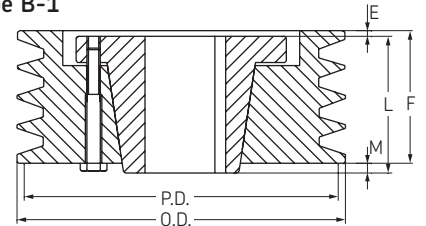
Type A-1



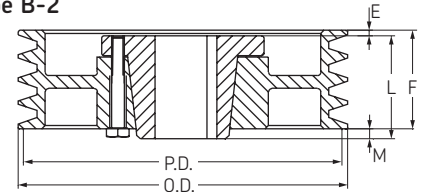
Type A-3



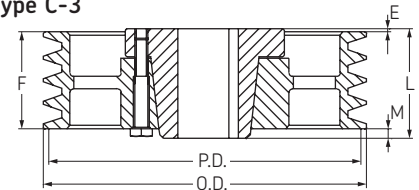
Type B-1



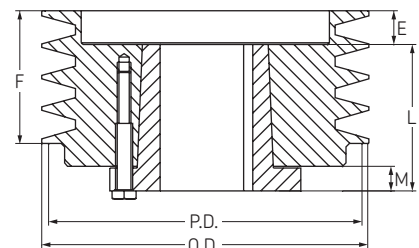
Type B-2



Type C-3



Type E-1





Narrow wedge belt pulleys

5V section QD bushed

▶ QD Bushings

▶ Classical V-belt pulleys

▶ . Narrow wedge belt pulleys

5 Groove

Pitch Diameter	O.D.	Pulley Type	Bushing	Bore		E	L	M	Weight lbs	Weight kg	Designation
				min	max						
4,30	4,40	E-1	SD	1/2	2	2 19/32	1 13/16	21/32	19,6	8,9	PHP 5-5V440-SD
4,55	4,65	E-1	SD	1/2	2	2 19/32	1 13/16	21/32	20,3	9,2	PHP 5-5V465-SD
4,80	4,90	A-1	SD	1/2	2	2 21/32	1 13/16	19/32	22,3	10,1	PHP 5-5V490-SD
5,10	5,20	A-1	SD	1/2	2	2 21/32	1 13/16	19/32	23,8	10,8	PHP 5-5V520-SD
5,40	5,50	A-1	SD	1/2	2	2 21/32	1 13/16	19/32	26,5	12	PHP 5-5V550-SD
5,80	5,90	A-1	SK	3/2	2 5/8	17/32	1 15/16	15/32	29,1	13,2	PHP 5-5V590-SK
6,20	6,30	A-1	SK	1/2	2 5/8	17/32	1 15/16	15/32	35,1	15,9	PHP 5-5V630-SK
6,60	6,70	A-1	SF	3/2	2 15/16	17/32	2 1/16	15/32	41,0	18,6	PHP 5-5V670-SF
7,00	7,10	A-1	SF	3/2	2 15/16	17/32	2 1/16	13/32	47,8	21,7	PHP 5-5V710-SF
7,40	7,50	A-1	SF	1/2	2 15/16	17/32	2 1/16	13/32	50,3	22,8	PHP 5-5V750-SF
7,90	8,00	A-1	E	7/8	3 1/2	19/32	2 3/4	13/32	52,2	23,7	PHP 5-5V800-E
8,40	8,50	A-1	E	7/8	3 1/2	19/32	2 3/4	13/32	54,7	24,8	PHP 5-5V850-E
8,90	9,00	A-1	E	7/8	3 1/2	19/32	2 3/4	13/32	58,0	26,3	PHP 5-5V900-E
9,15	9,25	A-1	E	7/8	3 1/2	19/32	2 3/4	13/32	62,2	28,2	PHP 5-5V925-E
9,65	9,75	A-1	E	7/8	3 1/2	19/32	2 3/4	13/32	70,5	32	PHP 5-5V975-E
10,20	10,30	A-2	E	7/8	3 1/2	19/32	2 3/4	13/32	72,8	33	PHP 5-5V1030-E
10,80	10,90	A-2	E	7/8	3 1/2	19/32	2 3/4	13/32	77,2	35	PHP 5-5V1090-E
11,20	11,30	A-3	E	7/8	3 1/2	19/32	2 3/4	13/32	80,5	36,5	PHP 5-5V1130-E
11,70	11,80	A-3	E	7/8	3 1/2	19/32	2 3/4	13/32	83,8	38	PHP 5-5V1180-E
12,40	12,50	A-3	E	7/8	3 1/2	19/32	2 3/4	13/32	89,9	40,8	PHP 5-5V1250-E
13,10	13,20	A-3	E	7/8	3 1/2	19/32	2 3/4	13/32	93,3	42,3	PHP 5-5V1320-E
13,90	14,00	A-3	E	7/8	3 1/2	19/32	2 3/4	13/32	98,3	44,6	PHP 5-5V1400-E
14,90	15,00	A-3	E	7/8	3 1/2	19/32	2 3/4	13/32	106,3	48,2	PHP 5-5V1500-E
15,90	16,00	A-3	E	7/8	3 1/2	19/32	2 3/4	13/32	112,9	51,2	PHP 5-5V1600-E
18,60	18,70	D-3	F	1	4	3/32	3 3/4	3/32	154,8	70,2	PHP 5-5V1870-F
21,10	21,20	D-3	F	1	4	1/32	3 3/4	1/32	196,2	89	PHP 5-5V2120-F
23,50	23,60	D-3	F	1	4	1/32	3 3/4	1/32	231,5	105	PHP 5-5V2360-F
27,90	28,00	D-3	F	1	4	1/32	3 3/4	1/32	271,2	123	PHP 5-5V2800-F
31,40	31,50	C-3	J	1 1/2	4 1/2	7/16	4 5/8	7/16	332,9	151	PHP 5-5V3150-J
37,40	37,50	C-3	J	1 1/2	4 1/2	7/16	4 5/8	7/16	418,9	190	PHP 5-5V3750-J
49,90	50,00	C-3	J	1 1/2	4 1/2	7/16	4 5/8	7/16	612,9	278	PHP 5-5V5000-J

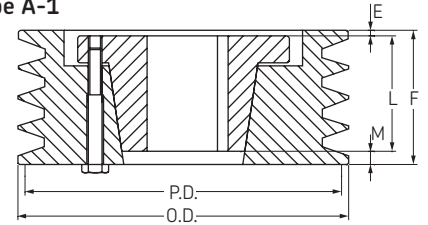
F = 3 3/4" (95,25 mm)

6 Groove

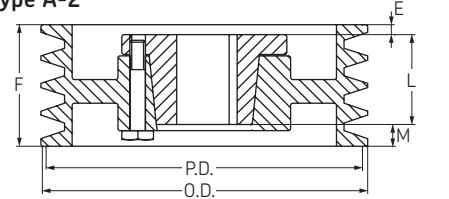
Pitch Diameter	O.D.	Pulley Type	Bushing	Bore		E	L	M	Weight lbs	Weight kg	Designation
				min	max						
4,30	4,40	E-1	SD	1/2	2	3 25/32	1 13/16	21/32	22,3	10,1	PHP 6-5V440-SD
4,55	4,65	E-1	SD	1/2	2	3 25/32	1 13/16	21/32	22,9	10,4	PHP 6-5V465-SD
4,80	4,90	A-1	SD	1/2	2	2 21/32	1 13/16	1 31/32	24,7	11,2	PHP 6-5V490-SD
5,10	5,20	A-1	SD	1/2	2	2 21/32	1 13/16	1 31/32	26,7	12,1	PHP 6-5V520-SD
5,40	5,50	A-1	SD	1/2	2	2 21/32	1 13/16	1 31/32	29,3	13,3	PHP 6-5V550-SD
5,80	5,90	A-1	SK	3/2	2 5/8	17/32	1 15/16	1 31/32	32,2	14,6	PHP 6-5V590-SK
6,20	6,30	A-1	SK	1/2	2 5/8	17/32	1 15/16	1 31/32	38,4	17,4	PHP 6-5V630-SK
6,60	6,70	A-1	SF	3/2	2 15/16	25/32	2 1/16	1 19/32	44,1	20,0	PHP 6-5V670-SF
7,00	7,10	A-1	SF	3/2	2 15/16	25/32	2 1/16	1 19/32	48,3	21,9	PHP 6-5V710-SF
7,40	7,50	A-1	SF	1/2	2 15/16	25/32	2 1/16	1 19/32	51,6	23,4	PHP 6-5V750-SF
7,90	8,00	A-1	E	7/8	3 1/2	27/32	2 3/4	27/32	53,4	24,2	PHP 6-5V800-E
8,40	8,50	A-1	E	7/8	3 1/2	27/32	2 3/4	27/32	58,9	26,7	PHP 6-5V850-E
8,90	9,00	A-1	E	7/8	3 1/2	27/32	2 3/4	27/32	62,8	28,5	PHP 6-5V900-E
9,15	9,25	A-1	E	7/8	3 1/2	27/32	2 3/4	27/32	66,6	30,2	PHP 6-5V925-E
9,65	9,75	A-1	E	7/8	3 1/2	27/32	2 3/4	27/32	74,5	33,8	PHP 6-5V975-E
10,20	10,30	A-2	E	7/8	3 1/2	27/32	2 3/4	27/32	80,7	36,6	PHP 6-5V1030-E
10,80	10,90	A-2	E	7/8	3 1/2	27/32	2 3/4	27/32	84,0	38,1	PHP 6-5V1090-E
11,20	11,30	A-3	E	7/8	3 1/2	27/32	2 3/4	27/32	87,7	39,8	PHP 6-5V1130-E
11,70	11,80	A-2	E	7/8	3 1/2	27/32	2 3/4	27/32	90,8	41,2	PHP 6-5V1180-E
12,40	12,50	B-3	F	1	4	23/32	3 3/4	1/32	128,3	58,2	PHP 6-5V1250-F
13,10	13,20	B-3	F	1	4	23/32	3 3/4	1/32	141,1	64,0	PHP 6-5V1320-F
13,90	14,00	B-3	F	1	4	23/32	3 3/4	1/32	145,5	66,0	PHP 6-5V1400-F
14,90	15,00	B-3	F	1	4	23/32	3 3/4	1/32	149,9	68,0	PHP 6-5V1500-F
15,90	16,00	B-3	F	1	4	23/32	3 3/4	1/32	170,9	77,5	PHP 6-5V1600-F
18,60	18,70	D-3	F	1	4	1/32	3 3/4	23/32	189,2	85,8	PHP 6-5V1870-F
21,10	21,20	D-3	F	1	4	1/32	3 3/4	23/32	211,6	96,0	PHP 6-5V2120-F
23,50	23,60	C-3	J	1 1/2	4 1/2	1/8	4 5/8	1/16	249,1	113,0	PHP 6-5V2360-J
27,90	28,00	C-3	J	1 1/2	4 1/2	1/8	4 5/8	1/16	326,3	148,0	PHP 6-5V2800-J
31,40	31,50	C-3	J	1 1/2	4 1/2	1/8	4 5/8	1/16	403,4	183,0	PHP 6-5V3150-J
37,40	37,50	C-3	J	1 1/2	4 1/2	1/8	4 5/8	1/16	480,6	218,0	PHP 6-5V3750-J
49,90	50,00	C-3	M	2	5 1/2	1 3/32	6 3/4	1 7/32	683,4	310,0	PHP 6-5V5000-M

F = 4 7/16" (112,71 mm)

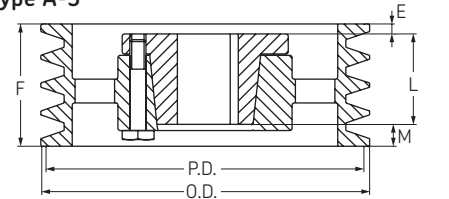
Type A-1



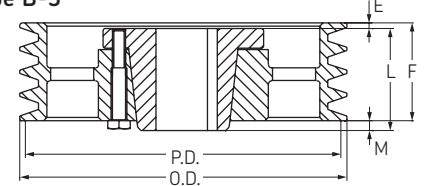
Type A-2



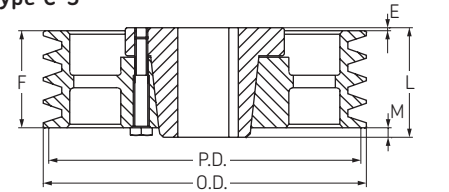
Type A-3



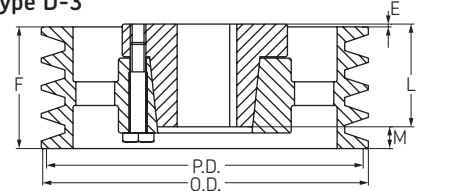
Type B-3



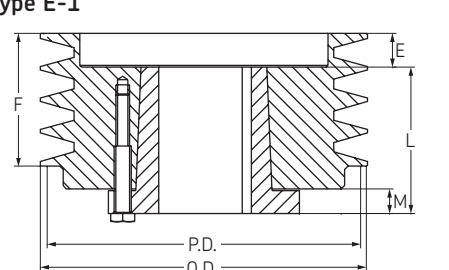
Type C-3



Type D-3



Type E-1





Narrow wedge belt pulleys

5V section QD bushed



8 Groove

Pitch Diameter	O.D.	Pulley Type	Bushing	Bore		E	L	M	Weight lbs	Weight kg	Designation
				min	max						
7,00	7,10	A-1	SF	1/2	2 15/16	1 9/32	2 1/16	2 15/32	54,5	24,7	PHP 8-5V710-SF
7,40	7,50	A-1	SF	1/2	2 15/16	1 9/32	2 1/16	2 15/32	62,2	28,2	PHP 8-5V750-SF
7,90	8,00	A-1	E	7/8	3 1/2	1 11/32	2 3/4	1 23/32	77,2	35,0	PHP 8-5V800-E
8,40	8,50	A-1	E	7/8	3 1/2	1 11/32	2 3/4	1 23/32	82,0	37,2	PHP 8-5V850-E
8,90	9,00	A-1	E	7/8	3 1/2	1 11/32	2 3/4	1 23/32	92,6	42,0	PHP 8-5V900-E
9,15	9,25	A-1	F	1	4	1 7/32	3 3/4	27/32	97,0	44,0	PHP 8-5V925-F
9,65	9,75	A-1	F	1	4	1 7/32	3 3/4	27/32	106,7	48,4	PHP 8-5V975-F
10,20	10,30	A-1	F	1	4	1 7/32	3 3/4	27/32	128,7	58,4	PHP 8-5V1030-F
10,80	10,90	A-1	F	1	4	1 7/32	3 3/4	27/32	139,1	63,1	PHP 8-5V1090-F
11,20	11,30	A-1	F	1	4	1 7/32	3 3/4	27/32	147,7	67,0	PHP 8-5V1130-F
11,70	11,80	A-2	F	1	4	1 7/32	3 3/4	27/32	156,5	71,0	PHP 8-5V1180-F
12,40	12,50	A-3	F	1	4	1 7/32	3 3/4	27/32	167,6	76,0	PHP 8-5V1250-F
13,10	13,20	A-3	F	1	4	1 7/32	3 3/4	27/32	176,4	80,0	PHP 8-5V1320-F
13,90	14,00	A-3	F	1	4	1 7/32	3 3/4	27/32	178,6	81,0	PHP 8-5V1400-F
14,90	15,00	A-3	F	1	4	1 7/32	3 3/4	27/32	183,0	83,0	PHP 8-5V1500-F
15,90	16,00	A-3	F	1	4	1 7/32	3 3/4	27/32	198,4	90,0	PHP 8-5V1600-F
18,60	18,70	A-3	J	1 1/2	4 1/2	1/8	4 5/8	1 1/16	264,6	120,0	PHP 8-5V1870-J
21,10	21,20	A-3	J	1 1/2	4 1/2	1/8	4 5/8	1 1/16	335,1	152,0	PHP 8-5V2120-J
23,50	23,60	A-3	J	1 1/2	4 1/2	1/8	4 5/8	1 1/16	407,9	185,0	PHP 8-5V2360-J
27,90	28,00	A-3	J	1 1/2	4 1/2	1/8	4 5/8	1 1/16	463,0	210,0	PHP 8-5V2800-J
31,40	31,50	B-3	M	2	5 1/2	11/32	6 3/4	1 9/32	533,5	242,0	PHP 8-5V3150-M
37,40	37,50	B-3	M	2	5 1/2	11/32	6 3/4	1 9/32	628,3	285,0	PHP 8-5V3750-M

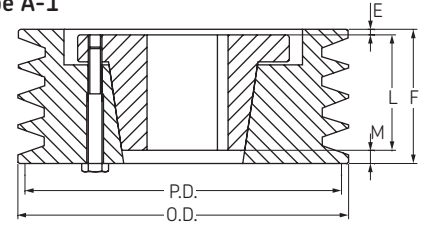
F = 5 13/16" (147,64 mm)

10 Groove

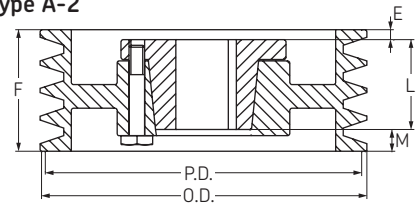
Pitch Diameter	O.D.	Pulley Type	Bushing	Bore		E	L	M	Weight lbs	Weight kg	Designation
				min	max						
7,90	8,00	A-1	E	7/8	3 1/2	2 3/32	2 3/4	2 11/32	82,9	37,6	PHP 10-5V800-E
8,40	8,50	A-1	E	7/8	3 1/2	2 3/32	2 3/4	2 11/32	98,1	44,5	PHP 10-5V850-E
8,90	9,00	A-1	F	1	4	1 31/32	3 3/4	1 15/32	113,1	51,3	PHP 10-5V900-F
9,15	9,25	A-1	F	1	4	1 31/32	3 3/4	1 15/32	116,8	53,0	PHP 10-5V925-F
9,65	9,75	A-1	F	1	4	1 31/32	3 3/4	1 15/32	123,5	56,0	PHP 10-5V975-F
10,20	10,30	A-1	F	1	4	1 31/32	3 3/4	1 15/32	141,1	64,0	PHP 10-5V1030-F
10,80	10,90	A-1	F	1	4	1 31/32	3 3/4	1 15/32	158,7	72,0	PHP 10-5V1090-F
11,20	11,30	A-1	F	1	4	1 31/32	3 3/4	1 15/32	169,8	77,0	PHP 10-5V1130-F
11,70	11,80	A-2	F	1	4	1 31/32	3 3/4	1 15/32	178,6	81,0	PHP 10-5V1180-F
12,40	12,50	A-2	J	1 1/2	4 1/2	2 1/8	4 5/8	7/16	246,9	112,0	PHP 10-5V1250-J
13,10	13,20	A-2	J	1 1/2	4 1/2	2 1/8	4 5/8	7/16	255,7	116,0	PHP 10-5V1320-J
13,90	14,00	A-3	J	1 1/2	4 1/2	2 1/8	4 5/8	7/16	286,6	130,0	PHP 10-5V1400-J
14,90	15,00	A-3	J	1 1/2	4 1/2	2 1/8	4 5/8	7/16	304,2	138,0	PHP 10-5V1500-J
15,90	16,00	A-3	J	1 1/2	4 1/2	2 1/8	4 5/8	7/16	321,9	146,0	PHP 10-5V1600-J
18,60	18,70	A-3	J	1 1/2	4 1/2	1/8	4 5/8	2 7/16	346,1	157,0	PHP 10-5V1870-J
21,10	21,20	A-3	J	1 1/2	4 1/2	1/8	4 5/8	2 7/16	370,4	168,0	PHP 10-5V2120-J
23,50	23,60	A-3	M	2	5 1/2	11/32	6 3/4	3/32	469,6	213,0	PHP 10-5V2360-M
27,90	28,00	A-3	M	2	5 1/2	11/32	6 3/4	3/32	529,1	240,0	PHP 10-5V2800-M
31,40	31,50	A-3	M	2	5 1/2	11/32	6 3/4	3/32	606,3	275,0	PHP 10-5V3150-M
37,40	37,50	A-3	M	2	5 1/2	11/32	6 3/4	3/32	694,5	315,0	PHP 10-5V3750-M
49,90	50,00	A-3	M	2	5 1/2	11/32	6 3/4	3/32	1009,7	458,0	PHP 10-5V5000-M

F = 7 3/16" (182,56 mm)

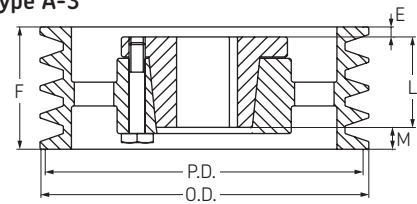
Type A-1



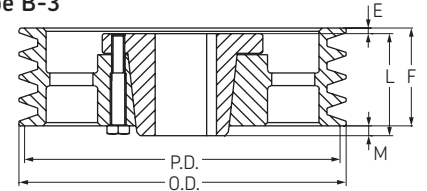
Type A-2



Type A-3



Type B-3



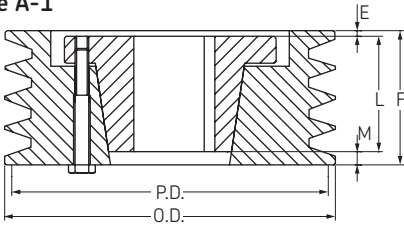


Narrow wedge belt pulleys

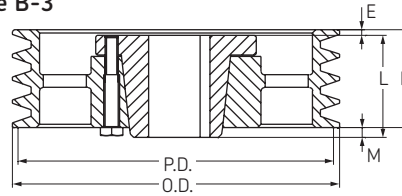
8V section QD bushed

- ▶ QD Bushings
- ▶ Classical V-belt pulleys
- ▶ . Narrow wedge belt pulleys

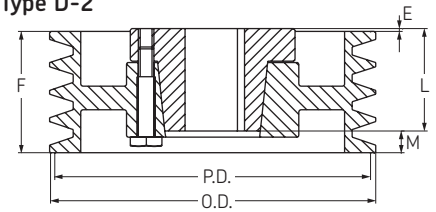
Type A-1



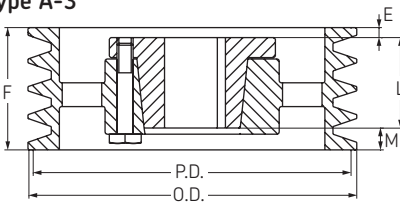
Type B-3



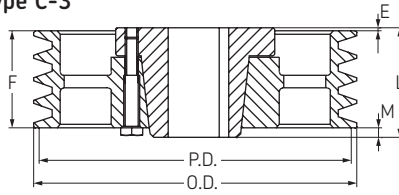
Type D-2



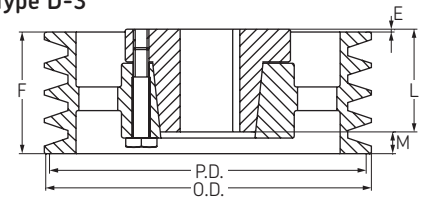
Type A-3



Type C-3



Type D-3



4 Groove

Pitch Diameter	O.D.	Pulley Type	Bushing	Bore		E	L	M	Weight lbs	Weight kg	Designation
				min	max						
12,30	12,50	D-2	F	1	4	5/32	3 3/4	1 9/32	165,3	75	PHP 4-8V1250-F
13,00	13,20	D-2	F	1	4	5/32	3 3/4	1 9/32	178,6	81	PHP 4-8V1320-F
13,80	14,00	D-3	F	1	4	5/32	3 3/4	1 9/32	191,8	87	PHP 4-8V1400-F
14,80	15,00	D-3	F	1	4	5/32	3 3/4	1 9/32	200,6	91	PHP 4-8V1500-F
15,80	16,00	D-3	F	1	4	5/32	3 3/4	1 9/32	211,6	96	PHP 4-8V1600-F
16,80	17,00	D-3	F	1	4	5/32	3 3/4	1 9/32	229,3	104	PHP 4-8V1700-F
17,80	18,00	D-3	F	1	4	5/32	3 3/4	1 9/32	251,3	114	PHP 4-8V1800-F
18,80	19,00	D-3	F	1	4	5/32	3 3/4	1 9/32	266,8	121	PHP 4-8V1900-F
19,80	20,00	D-3	J	1 1/2	4 1/2	0	4 5/8	1/4	299,8	136	PHP 4-8V2000-J
21,00	21,20	D-3	J	1 1/2	4 1/2	0	4 5/8	1/4	319,7	145	PHP 4-8V2120-J
22,20	22,40	D-3	J	1 1/2	4 1/2	0	4 5/8	1/4	339,5	154	PHP 4-8V2240-J
24,60	24,80	C-3	M	2	5 1/2	25/32	6 3/4	1 3/32	388,0	176	PHP 4-8V2480-M
29,80	30,00	C-3	M	2	5 1/2	25/32	6 3/4	1 3/32	493,8	224	PHP 4-8V3000-M
35,30	35,50	C-3	M	2	5 1/2	25/32	6 3/4	1 3/32	588,6	267	PHP 4-8V3550-M
39,80	40,00	C-3	M	2	5 1/2	25/32	6 3/4	1 3/32	683,4	310	PHP 4-8V4000-M
44,30	44,50	C-3	M	2	5 1/2	25/32	6 3/4	1 3/32	800,3	363	PHP 4-8V4450-M
52,80	53,00	C-3	M	2	5 1/2	25/32	6 3/4	1 3/32	963,4	437	PHP 4-8V5300-M

F = 4 7/8" (123,83 mm)

5 Groove

Pitch Diameter	O.D.	Pulley Type	Bushing	Bore		E	L	M	Weight lbs	Weight kg	Designation
				min	max						
12,30	12,50	A-2	F	1	4	31/32	3 3/4	1 9/32	180,8	82	PHP 5-8V1250-F
13,00	13,20	A-2	F	1	4	31/32	3 3/4	1 9/32	196,2	89	PHP 5-8V1320-F
13,80	14,00	A-3	F	1	4	31/32	3 3/4	1 9/32	218,3	99	PHP 5-8V1400-F
14,80	15,00	A-3	F	1	4	31/32	3 3/4	1 9/32	227,1	103	PHP 5-8V1500-F
15,80	16,00	A-3	F	1	4	31/32	3 3/4	1 9/32	244,7	111	PHP 5-8V1600-F
16,80	17,00	A-3	J	1 1/2	4 1/2	9/16	4 5/8	13/16	262,4	119	PHP 5-8V1700-J
17,80	18,00	A-3	J	1 1/2	4 1/2	9/16	4 5/8	13/16	288,8	131	PHP 5-8V1800-J
18,80	19,00	A-3	J	1 1/2	4 1/2	9/16	4 5/8	13/16	313,1	142	PHP 5-8V1900-J
19,80	20,00	A-3	J	1 1/2	4 1/2	9/16	4 5/8	13/16	332,9	151	PHP 5-8V2000-J
21,00	21,20	A-3	J	1 1/2	4 1/2	9/16	4 5/8	13/16	368,2	167	PHP 5-8V2120-J
22,20	22,40	B-3	M	2	5 1/2	11/32	6 3/4	1 3/32	392,4	178	PHP 5-8V2240-M
24,60	24,80	B-3	M	2	5 1/2	11/32	6 3/4	1 3/32	443,1	201	PHP 5-8V2480-M
29,80	30,00	B-3	M	2	5 1/2	11/32	6 3/4	1 3/32	535,7	243	PHP 5-8V3000-M
35,30	35,50	B-3	M	2	5 1/2	11/32	6 3/4	1 3/32	612,9	278	PHP 5-8V3550-M
39,80	40,00	B-3	M	2	5 1/2	11/32	6 3/4	1 3/32	749,6	340	PHP 5-8V4000-M
44,30	44,50	C-3	N	2 7/16	5 7/16	1 1/8	8 1/8	1	921,5	418	PHP 5-8V4450-N
52,80	53,00	C-3	N	2 7/16	5 7/16	1 1/8	8 1/8	1	1093,5	496	PHP 5-8V5300-N

F = 6 (152,40 mm)

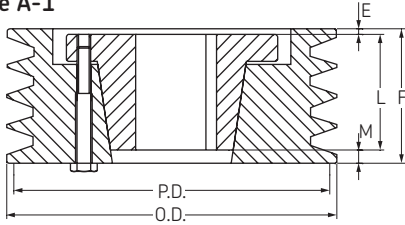


Narrow wedge belt pulleys

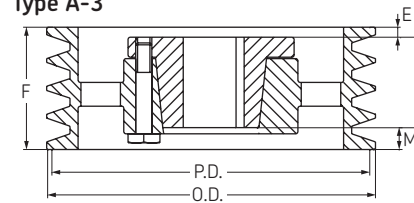
8V section QD bushed



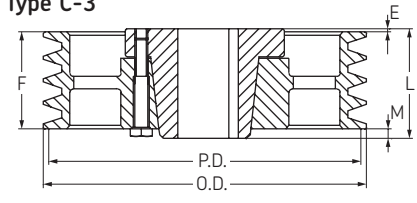
Type A-1



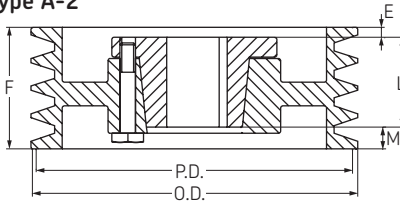
Type A-3



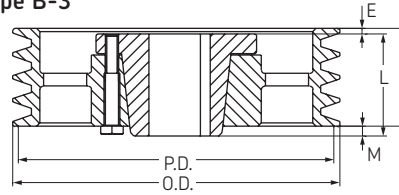
Type C-3



Type A-2



Type B-3



6 Groove

Pitch Diameter	O.D.	Pulley Type	Bushing	Bore		E	L	M	Weight lbs	Weight kg	Designation
				min	max						
12,30	12,50	A-2	F	1	4	31/32	3 3/4	2 13/32	198,4	90	PHP 6-8V1250-F
13,00	13,20	A-2	F	1	4	31/32	3 3/4	2 13/32	216,1	98	PHP 6-8V1320-F
13,80	14,00	A-3	F	1	4	31/32	3 3/4	2 13/32	246,9	112	PHP 6-8V1400-F
14,80	15,00	A-2	J	1 1/2	4 1/2	1 1/8	4 5/8	1 3/8	271,2	123	PHP 6-8V1500-J
15,80	16,00	A-3	J	1 1/2	4 1/2	1 1/8	4 5/8	1 3/8	284,4	129	PHP 6-8V1600-J
16,80	17,00	A-3	J	1 1/2	4 1/2	1 1/8	4 5/8	1 3/8	299,8	136	PHP 6-8V1700-J
17,80	18,00	A-3	J	1 1/2	4 1/2	1 1/8	4 5/8	1 3/8	315,3	143	PHP 6-8V1800-J
18,80	19,00	A-3	J	1 1/2	4 1/2	1 1/8	4 5/8	1 3/8	346,1	157	PHP 6-8V1900-J
19,80	20,00	B-3	M	2	5 1/2	1 11/32	6 3/4	31/32	394,6	179	PHP 6-8V2000-M
21,00	21,20	B-3	M	2	5 1/2	1 11/32	6 3/4	31/32	425,5	193	PHP 6-8V2120-M
22,20	22,40	B-3	M	2	5 1/2	1 11/32	6 3/4	31/32	451,9	205	PHP 6-8V2240-M
24,60	24,80	A-3	M	2	5 1/2	11/32	6 3/4	1/32	518,1	235	PHP 6-8V2480-M
29,80	30,00	A-3	M	2	5 1/2	11/32	6 3/4	1/32	628,3	285	PHP 6-8V3000-M
35,30	35,50	C-3	N	2 7/16	5 7/8	15/16	8 1/8	1/16	749,6	340	PHP 6-8V3550-N
39,80	40,00	C-3	N	2 7/16	5 7/8	15/16	8 1/8	1/16	868,6	394	PHP 6-8V4000-N
44,30	44,50	C-3	N	2 7/16	5 7/8	15/16	8 1/8	1/16	1078,1	489	PHP 6-8V4450-N
52,80	53,00	C-3	N	2 7/16	5 7/8	15/16	8 1/8	1/16	1287,5	584	PHP 6-8V5300-N

F = 7 1/8" (180,98 mm)

8 Groove

Pitch Diameter	O.D.	Pulley Type	Bushing	Bore		E	L	M	Weight lbs	Weight kg	Designation
				min	max						
12,30	12,50	A-1	J	1 1/2	4 1/2	2 1/8	4 5/8	2 5/8	288,8	131	PHP 8-8V1250-J
13,00	13,20	A-1	J	1 1/2	4 1/2	2 1/8	4 5/8	2 5/8	352,7	160	PHP 8-8V1320-J
13,80	14,00	A-2	J	1 1/2	4 1/2	2 1/8	4 5/8	2 5/8	385,8	175	PHP 8-8V1400-J
14,80	15,00	A-2	J	1 1/2	4 1/2	2 1/8	4 5/8	2 5/8	410,1	186	PHP 8-8V1500-J
15,80	16,00	A-2	J	1 1/2	4 1/2	2 1/8	4 5/8	2 5/8	463,0	210	PHP 8-8V1600-J
16,80	17,00	A-2	M	2	5 1/2	2 11/32	6 3/4	9/32	487,2	221	PHP 8-8V1700-M
17,80	18,00	A-2	M	2	5 1/2	2 11/32	6 3/4	9/32	518,1	235	PHP 8-8V1800-M
18,80	19,00	A-3	M	2	5 1/2	2 11/32	6 3/4	9/32	551,2	250	PHP 8-8V1900-M
19,80	20,00	A-3	M	2	5 1/2	2 11/32	6 3/4	9/32	584,2	265	PHP 8-8V2000-M
21,10	21,20	A-3	M	2	5 1/2	2 11/32	6 3/4	9/32	617,3	280	PHP 8-8V2120-M
22,20	22,40	A-3	M	2	5 1/2	2 11/32	6 3/4	9/32	650,4	295	PHP 8-8V2240-M
24,60	24,80	A-2	N	2 7/16	5 7/8	3/16	8 1/8	11/16	705,5	320	PHP 8-8V2480-N
29,80	30,00	A-3	N	2 7/16	5 7/8	3/16	8 1/8	11/16	826,7	375	PHP 8-8V3000-N
35,30	35,50	A-3	N	2 7/16	5 7/8	3/16	8 1/8	11/16	974,4	442	PHP 8-8V3550-N
39,80	40,00	A-3	N	2 7/16	5 7/8	3/16	8 1/8	11/16	1168,4	530	PHP 8-8V4000-N
44,30	44,50	B-3	P	2 15/16	7	1/4	9 3/8	1/4	1344,8	610	PHP 8-8V4450-P
52,80	53,00	B-3	P	2 15/16	7	1/4	9 3/8	1/4	1752,7	795	PHP 8-8V5300-P

F = 9 3/8" (238,13 mm)

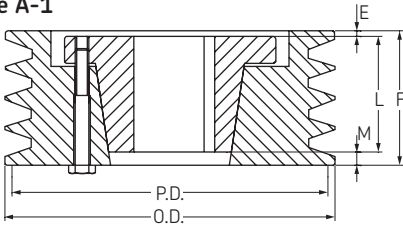


Narrow wedge belt pulleys

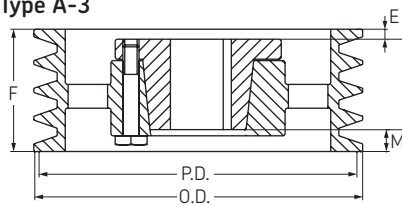
8V section QD bushed

- ▶ QD Bushings
- ▶ Classical V-belt pulleys
- ▶ . Narrow wedge belt pulleys

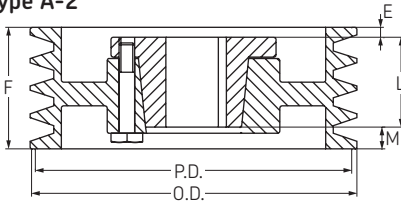
Type A-1



Type A-3



Type A-2



10 Groove

Pitch Diameter	O.D.	Pulley Type	Bushing	Bore		E	L	M	Weight lbs	Weight kg	Designation
				min	max						
12,30	12,50	A-1	J	1 1/2	4 1/2	2 1/8	4 5/8	4 7/6	341,7	155	PHP 10-8V1250-J
13,00	13,20	A-1	J	1 1/2	4 1/2	2 1/8	4 5/8	4 7/6	418,9	190	PHP 10-8V1320-J
13,80	14,00	A-1	J	1 1/2	4 1/2	2 1/8	4 5/8	4 7/6	463,0	210	PHP 10-8V1400-J
14,80	15,00	A-1	M	2	5 1/2	2 11/32	6 3/4	2 17/32	586,4	266	PHP 10-8V1500-M
15,80	16,00	A-2	M	2	5 1/2	2 11/32	6 3/4	2 17/32	564,4	256	PHP 10-8V1600-M
16,80	17,00	A-1	M	2	5 1/2	2 11/32	6 3/4	2 17/32	619,5	281	PHP 10-8V1700-M
17,80	18,00	A-2	M	2	5 1/2	2 11/32	6 3/4	2 17/32	639,3	290	PHP 10-8V1800-M
18,80	19,00	A-2	M	2	5 1/2	2 11/32	6 3/4	2 17/32	663,6	301	PHP 10-8V1900-M
19,80	20,00	A-2	M	2	5 1/2	2 11/32	6 3/4	2 17/32	716,5	325	PHP 10-8V2000-M
21,00	21,20	A-2	M	2	5 1/2	2 11/32	6 3/4	2 17/32	749,6	340	PHP 10-8V2120-M
22,20	22,40	A-2	N	2 7/16	5 7/6	3/16	8 1/8	3 5/16	804,7	365	PHP 10-8V2240-N
24,60	24,80	A-2	N	2 7/16	5 7/6	3/16	8 1/8	3 5/16	859,8	390	PHP 10-8V2480-N
29,80	30,00	A-3	N	2 7/16	5 7/6	3/16	8 1/8	3 5/16	959,0	435	PHP 10-8V3000-N
35,30	35,50	A-2	P	2 15/16	7	1/4	9 3/8	2	1117,7	507	PHP 10-8V3550-P
39,80	40,00	A-3	P	2 15/16	7	1/4	9 3/8	2	1355,8	615	PHP 10-8V4000-P
44,30	44,50	A-2	P	2 15/16	7	1/4	9 3/8	2	1565,3	710	PHP 10-8V4450-P
52,80	53,00	A-3	P	2 15/16	7	1/4	9 3/8	2	2083,4	945	PHP 10-8V5300-P

F = 11 5/8" (295,28 mm)

12 Groove

Pitch Diameter	O.D.	Pulley Type	Bushing	Bore		E	L	M	Weight lbs	Weight kg	Designation
				min	max						
12,30	12,50	A-1	M	2	5 1/2	2 11/32	6 3/4	4 25/32	429,9	195	PHP 12-8V1250-M
13,00	13,20	A-1	M	2	5 1/2	2 11/32	6 3/4	4 25/32	507,1	230	PHP 12-8V1320-M
13,80	14,00	A-1	M	2	5 1/2	2 11/32	6 3/4	4 25/32	551,2	250	PHP 12-8V1400-M
14,80	15,00	A-1	M	2	5 1/2	2 11/32	6 3/4	4 25/32	590,8	268	PHP 12-8V1500-M
15,80	16,00	A-1	M	2	5 1/2	2 11/32	6 3/4	4 25/32	652,6	296	PHP 12-8V1600-M
16,80	17,00	A-1	M	2	5 1/2	2 11/32	6 3/4	4 25/32	751,8	341	PHP 12-8V1700-M
17,80	18,00	A-1	M	2	5 1/2	2 11/32	6 3/4	4 25/32	760,6	345	PHP 12-8V1800-M
18,80	19,00	A-1	N	2 7/16	5 7/6	3/16	8 1/8	5 9/16	776,0	352	PHP 12-8V1900-N
19,80	20,00	A-1	N	2 7/16	5 7/6	3/16	8 1/8	5 9/16	848,8	385	PHP 12-8V2000-N
21,00	21,20	A-1	N	2 7/16	5 7/6	3/16	8 1/8	5 9/16	881,8	400	PHP 12-8V2120-N
22,20	22,40	A-1	N	2 7/16	5 7/6	3/16	8 1/8	5 9/16	959,0	435	PHP 12-8V2240-N
24,60	24,80	A-1	N	2 7/16	5 7/6	3/16	8 1/8	5 9/16	1014,1	460	PHP 12-8V2480-N
29,80	30,00	A-2	P	2 15/16	7	1/4	9 3/8	4 1/4	1091,3	495	PHP 12-8V3000-P
35,30	35,50	A-2	P	2 15/16	7	1/4	9 3/8	4 1/4	1261,0	572	PHP 12-8V3550-P
39,80	40,00	A-2	P	2 15/16	7	1/4	9 3/8	4 1/4	1543,2	700	PHP 12-8V4000-P
44,30	44,50	A-2	P	2 15/16	7	1/4	9 3/8	4 1/4	1818,8	825	PHP 12-8V4450-P
52,80	53,00	A-2	P	2 15/16	7	1/4	9 3/8	4 1/4	2381,0	1080	PHP 12-8V5300-P

F = 13 7/8" (352,43 mm)



The knowledge

From the company that invented the selfaligning ball bearing 100 years ago, SKF has evolved into a knowledge engineering company that is able to draw on five platforms to create unique solutions for its customers. These platforms include bearings, bearing units and seals, of course, but extend to other areas including: lubricants and lubrication systems, critical for long bearing life in many applications; mechatronics that combine mechanical and electronics knowledge into systems for more effective linear motion and sensorized solutions; and a full range of services, from design and logistics support to conditioning monitoring and reliability systems. Though the scope has broadened, SKF continues to maintain the world's leadership in the design, manufacture and marketing of rolling bearings, as well as complementary products such as radial seals. SKF also holds an increasingly important position in the market for linear motion products, high-precision aerospace bearings, machine tool spindles and plant maintenance services.

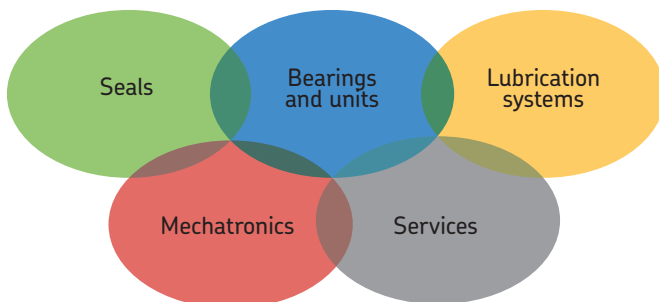
The SKF Group is globally certified to ISO 14001, the international standard for environmental management, as well as OHSAS 18001, the health and safety management standard. Individual divisions have been approved for quality certification in accordance with either ISO 9000 or QS 9000. With some 100 manufacturing sites worldwide and sales companies in 70 countries, SKF is a truly international corporation. In addition, our distributors and dealers in some 15 000 locations around the world, an ebusiness marketplace and a global distribution system put SKF close to customers for the supply of both products and services. In essence, SKF solutions are available wherever and whenever customers need them. Overall, the SKF brand and the corporation are stronger than ever. As the knowledge engineering company, we stand ready to serve you with world-class product competencies, intellectual resources, and the vision to help you succeed.



© Airbus – photo: exm company, H. Goussé

Evolving by-wire technology

SKF has a unique expertise in fast-growing by-wire technology, from fly-by-wire, to drive-by-wire, to work-by-wire. SKF pioneered practical fly-by-wire technology and is a close working partner with all aerospace industry leaders. As an example, virtually all aircraft of the Airbus design use SKF by-wire systems for cockpit flight control. SKF is also a leader in automotive by-wire technology, and has partnered with automotive engineers to develop two concept cars, which employ SKF mechatronics for steering and braking. Further by-wire development has led SKF to produce an allelectric forklift truck, which uses mechatronics rather than hydraulics for all controls.



engineering company



Harnessing wind power

The growing industry of wind-generated electric power provides a source of clean, green electricity. SKF is working closely with global industry leaders to develop efficient and trouble-free turbines, providing a wide range of large, highly specialized bearings and condition monitoring systems to extend equipment life of wind f3s located in even the most remote and inhospitable environments.



Working in extreme environments

In frigid winters, especially in northern countries, extreme sub-zero temperatures can cause bearings in railway axleboxes to seize due to lubrication starvation. SKF created a new family of synthetic lubricants formulated to retain their lubrication viscosity even at these extreme temperatures. SKF knowledge enables manufacturers and end user customers to overcome the performance issues resulting from extreme temperatures, whether hot or cold. For example, SKF products are at work in diverse environments such as baking ovens and instant freezing in food processing plants.



Developing a cleaner cleaner

The electric motor and its bearings are the heart of many household appliances. SKF works closely with appliance manufacturers to improve their products' performance, cut costs, reduce weight, and reduce energy consumption. A recent example of this cooperation is a new generation of vacuum cleaners with substantially more suction. SKF knowledge in the area of small bearing technology is also applied to manufacturers of power tools and office equipment.



Maintaining a 350 km/h R&D lab

In addition to SKF's renowned research and development facilities in Europe and the United States, Formula One car racing provides a unique environment for SKF to push the limits of bearing technology. For over 50 years, SKF products, engineering and knowledge have helped make Scuderia Ferrari a formidable force in F1 racing. (The average racing Ferrari utilizes more than 150 SKF components.)

Lessons learned here are applied to the products we provide to automakers and the aftermarket worldwide.



Delivering Asset Efficiency Optimization

Through SKF Reliability Systems, SKF provides a comprehensive range of asset efficiency products and services, from condition monitoring hardware and software to maintenance strategies, engineering assistance and machine reliability programmes. To optimize efficiency and boost productivity, some industrial facilities opt for an Integrated Maintenance Solution, in which SKF delivers all services under one fixed-fee, performance-based contract.



Planning for sustainable growth

By their very nature, bearings make a positive contribution to the natural environment, enabling machinery to operate more efficiently, consume less power, and require less lubrication. By raising the performance bar for our own products, SKF is enabling a new generation of high-efficiency products and equipment. With an eye to the future and the world we will leave to our children, the SKF Group policy on environment, health and safety, as well as the manufacturing techniques, are planned and implemented to help protect and preserve the earth's limited natural resources. We remain committed to sustainable, environmentally responsible growth.

SKF is a registered trademark of the SKF Group.

© SKF Group 2008

The contents of this catalogue are the copyright of the publisher and may not be reproduced (even extracts) unless permission is granted. Every care has been taken to ensure the accuracy of the information contained in this catalogue but no liability can be accepted for any loss or damage whether direct, indirect or consequential arising out of the use of the information contained herein.

Publication **6366 EN (I) (under correction)**

Printed in Hungary on environmentally friendly paper.