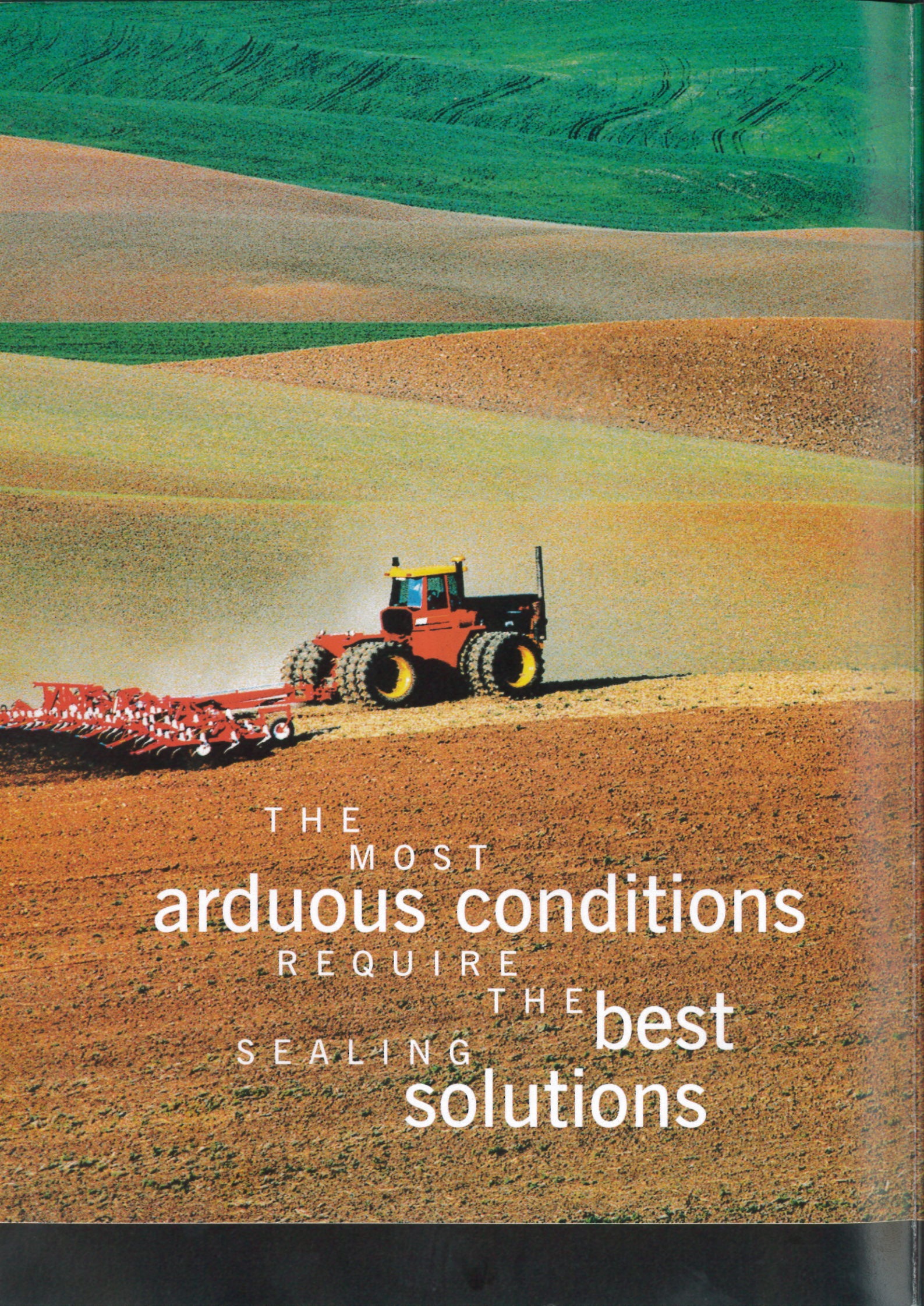


SKF

Agricultural PRODUCT RANGE





THE
MOST
arduous conditions
REQUIRE
SEALING THE
best
solutions

SKF

OFFER THE WIDEST RANGE OF SEALING TO SOLVE YOUR PROBLEMS

Rubberised
flinger

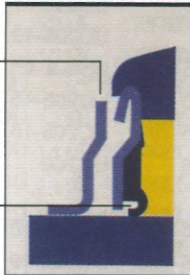


2RF

The patented 2RF seal is the most effective seal ever produced for Y bearings. Dirt and Ingress is purged out of the bearing when regreasing the unit, however unlike other seal designs the seal lip configuration will revert to its original form without permanent damage. It is ideal for very contaminated conditions such as those found in agricultural applications.

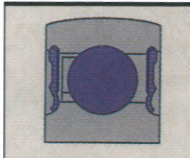
Flinger
provides
mechanical
protection

Wear
resistant lip



2F

The 2F seal consists of a pressed steel flinger and a sealing washer with synthetic rubber sealing lips. This flinger, which runs on the inner ring, protects the sealing lips from damage by coarse contaminants. The 2F dual system offers enhanced performance even under extremely arduous conditions and is an ideal under extremely arduous conditions and is an ideal alternative when the 2RF seal is not available.



2RS1

The 2RS1 seal is a wear resistant rubber seal which is reinforced with a pressed steel insert. This seal was developed for the SKF deep groove bearings and is also used in the 1762(00) & 17263(00) series.

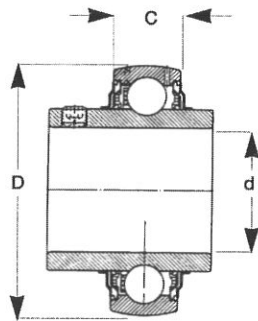


TRIPLE LIP

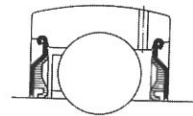
The triple lip seal in the FYH & FAFNIR Disc-Harrow bearings, consists of a triple lip synthetic rubber seal reinforced by a pressed steel flinger. This proven sealing system shows outstanding performance under severely contaminated conditions.

YAR 200

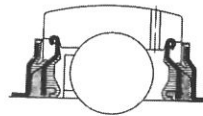
grub screw locking



seal options



2F



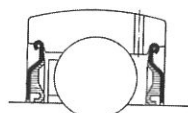
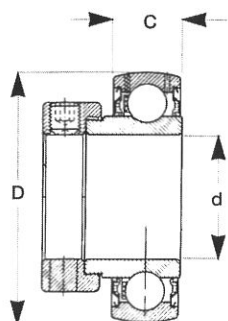
2RF

d	D	C	SKF	FYH	NTN	NSK	ASAHI
17mm	40	12	YAR 203				
5/8	40	12	YAR 203-010				
17mm	47	16		UC203	UC203	UC203	UC203
5/8	47	16		UC203-10	UC203-010	UC203-10	UC203-10
20mm	47	14	YAR 204	UC204	UC204	UC204	UC204
3/4	47	14	YAR 204-012	UC204-12	UC204-012	UC204-12	UC204-12
25mm	52	15	YAR 205	UC205	UC205	UC205	UC205
13/16	52	15	YAR 205-013			UC205-13	
7/8	52	15	YAR 205-014	UC205-14	UC205-014	UC205-14	UC205-14
15/16	52	15	YAR 205-015	UC205-15	UC205-015	UC205-15	UC205-15
1	52	15	YAR 205-100	UC205-16	UC205-100	UC205-16	UC205-16
30mm	62	18	YAR 206	UC206	UC206	UC206	UC206
1 1/16	62	18	YAR 206-101				UC206-17
1 1/6	62	18	YAR 206-102	UC206-18	UC206-102	UC206-18	UC206-18
1 3/16	62	18	YAR 206-103	UC206-19	UC206-103	UC206-19	UC206-19
1 1/4	62	18	YAR 206-104				UC206-20
35mm	72	19	YAR 207	UC207	UC207	UC207	UC207
1 1/4	72	19	YAR 207-104	UC207-20	UC207-104	UC207-20	UC207-20
1 5/16	72	19	YAR 207-105	UC207-21	UC207-105	UC207-21	UC207-21
1 3/8	72	19	YAR 207-106	UC207-22	UC207-106	UC207-22	UC207-22
1 7/16	72	19	YAR 207-107	UC207-23	UC207-107	UC207-23	UC207-23
40mm	80	21	YAR 208	UC208	UC208	UC208	UC208
1 7/16	80	21	YAR 208-107			UC208-23	
1 1/2	80	21	YAR 208-108	UC208-24	UC208-108	UC208-24	UC208-24
1 9/16	80	21	YAR 208-109	UC208-25	UC208-109	UC208-25	UC208-25
45mm	85	22	YAR 209	UC209	UC209	UC209	UC209
1 1/2	85	22	YAR 209-108				
1 5/8	85	22	YAR 209-110	UC209-26	UC209-110	UC209-26	UC209-26
1 11/16	85	22	YAR 209-111	UC209-27	UC209-111	UC209-27	UC209-27
1 3/4	85	22	YAR 209-112	UC209-28	UC209-112	UC209-28	UC209-28
50mm	90	22	YAR 210	UC210	UC210	UC210	UC210
1 11/16	90	22	YAR 210-111				
1 3/4	90	22	YAR 210-112				
1 7/8	90	22	YAR 210-114	UC210-30	UC210-114	UC210-30	UC210-30
1 15/16	90	22	YAR 210-115	UC210-31	UC210-115	UC210-31	UC210-31

* Please check available seal options with your SKF distributor

YET 200

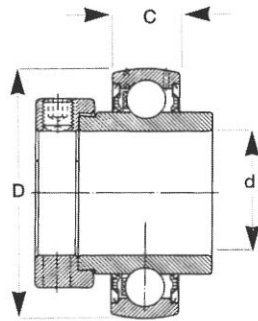
eccentric locking collar extended inner ring one side



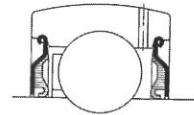
d	D	C	SKF	FYH	NTN	NSK	ASAHI
15mm	40	12	YET 203-15	SA202	AEL202	EN202	KH202
17mm	40	12	YET 203	SA203	AEL203	EN203	KH203
5/8	40	12	YET 203-010	SA203-10	AEL203-010	EN203-10	KH203-10
11/16	40	12	YET 203-011		AEL203-011		
20mm	47	14	YET 204	SA204	AEL204	EN204	KH204
3/4	47	14	YET 204-012	SA204-12	AEL204-012	EN204-12	KH204-12
25mm	52	15	YET 205	SA205	AEL205	EN205	KH205
13/16	52	15	YET 205-013			EN205-13	
7/8	52	15	YET 205-014	SA205-14	AEL205-014	EN205-14	KH205-14
15/16	52	15	YET 205-015		AEL205-015	EN205-15	KH205-15
1	52	15	YET 205-100	SA205-16	AEL205-100	EN205-16	KH205-16
30mm	62	18	YET 206	SA206	AEL206	EN206	KH206
1 1/16	62	18	YET 206-101		AEL206-101	EN206-17	
1 1/8	62	18	YET 206-102	SA206-18	AEL206-102	EN206-18	KH206-18
1 3/16	62	18	YET 206-103	SA206-19	AEL206-103	EN206-19	KH206-19
1 1/4	62	18	YET 206-104	SA206-20		EN206-20	KH206-20
35mm	72	19	YET 207	SA207	AEL207	EN207	KH207
1 1/4	72	19	YET 207-104	SA207-20	AEL207-104	EN207-20	KH207-20
1 5/16	72	19	YET 207-105		AEL207-105	EN207-21	KH207-21
1 3/8	72	19	YET 207-106	SA207-22	AEL207-106	EN207-22	KH207-22
1 7/16	72	19	YET 207-107	SA207-23	AEL207-107	EN207-23	KH207-23
40mm	80	21	YET 208	SA208	AEL208	EN208	KH208
1 1/2	80	21	YET 208-108	SA208-24	AEL208-108	EN-208-24	KH208-24
1 6/16	80	21	YET 208-109		AEL208-109	EN208-25	KH208-25
45mm	85	22	YET 209				KH209
1 5/8	85	22	YET 209-110				KH209-26
1 11/16	85	22	YET 209-111				KH209-27

YEL 200

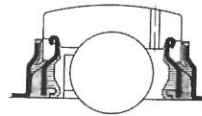
eccentric locking collar - extended inner ring both sides



seal options



2F



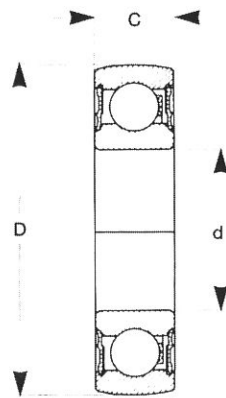
2RF

d	D	C	SKF	FYH	NTN	NSK	ASAHI
17mm	40	12	YEL 203				
5/8	40	12	YEL 203-010				
11/16	40	12	YEL 203-011				
17mm	47	16		NA203	UEL203	EW203	UG203
20mm	47	14	YEL 204	NA204	UEL204	EW204	UG204
3/4	47	14	YEL 204-012	NA204-12	UEL204-012	EW204-12	UG204-12
25mm	52	15	YEL 205	NA205	UEL205	EW205	UG205
13/16	52	15	YEL 205-013		UEL205-013	EW205-13	
7/8	52	15	YEL 205-014	NA205-14	UEL205-014	EW205-14	UG205-14
15/16	52	15	YEL 205-015	NA205-15	UEL205-015	EW205-15	UG205-15
1	52	15	YEL 205-100	NA205-16	UEL205-100	EW205-16	UG205-16
30mm	62	18	YEL 206	NA206	UEL206	EW206	UG206
1 1/16	62	18	YEL 206-101		UEL206-101	EW206-17	
1 1/8	62	18	YEL 206-102	NA206-18	UEL206-102	EW206-18	UG206-18
1 3/16	62	18	YEL 206-103	NA206-19	UEL206-103	EW206-19	UG206-19
1 1/4	62	18	YEL 206-104	NA206-20		EW206-20	UG206-20
35mm	72	19	YEL 207	NA207	UEL207	EW207	UG207
1 1/4	72	19	YEL 207-104	NA207-20	UEL207-104	EW207-20	UG207-20
1 5/16	72	19	YEL 207-105	NA207-21	UEL207-105	EW207-21	UG207-21
1 3/8	72	19	YEL 207-106	NA207-22	UEL207-106	EW207-22	UG207-22
1 7/16	72	19	YEL 207-107	NA207-23	UEL207-107	EW207-23	UG207-23
40mm	80	21	YEL 208	NA208	UEL208	EW208	UG208
1 1/2	80	21	YEL 208-108	NA208-24	UEL208-108	EW208-24	UG208-24
1 9/16	80	21	YEL 208-109	NA208-25	UEL208-109	EW208-25	UG208-25
45mm	85	22	YEL 209	NA209	UEL209	EW209	UG209
1 5/8	85	22	YEL 209-110	NA209-26	UEL209-110	EW209-26	UG209-26
1 11/16	85	22	YEL 209-111	NA209-27	UEL209-111	EW209-27	UG209-27
1 3/4	85	22	YEL 209-112	NA209-28	UEL209-112	EW209-28	UG209-28
50mm	90	22	YEL 210	NA210	UEL210	EW210	UG210
1 7/8	90	22	YEL 210-114	NA210-30	UEL210-114	EW210-30	UG210-30
1 15/16	90	22	YEL 210-115	NA210-31	UEL210-115	EW210-31	UG210-31
55mm	100	25	YEL 211	NA211	UEL211	EW211	UG211
2	100	25	YEL 211-200	NA211-32	UEL211-200	EW211-32	UG211-32
2 3/16	100	25	YEL 211-203	NA211-35	UEL211-203	EW211-35	UG211-35
60mm	110	26	YEL 212	NA212	UEL212	EW212	UG212
2 1/4	110	26	YEL 212-204	NA212-36	UEL212-204	EW212-36	UG212-36
2 7/16	110	26	YEL 212-207	NA212-39	UEL212-207	EW212-39	UG212-39

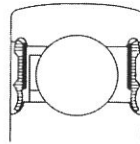
* Please check available seal options with your SKF distributor

17262(00) & 17263(00) Series

standard inner ring & spherical outer race



seal options



2RS1

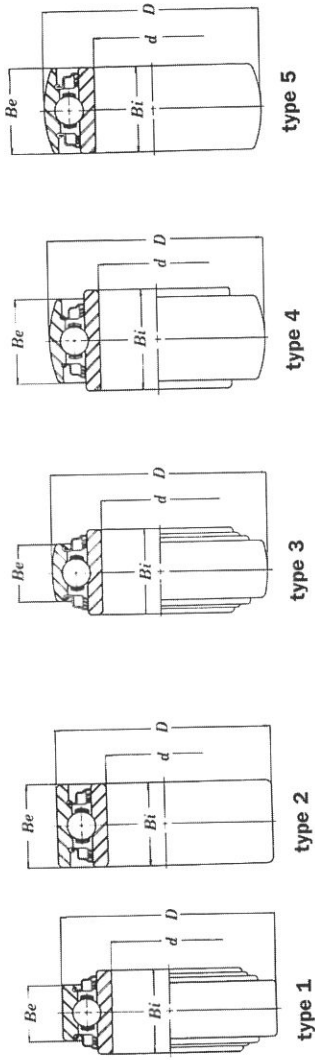
d	D	C	SKF	FYH	NTN	NSK
15	35	11	1726202-2RS1	SC202	CS202LLU	CS202DDU
17	40	12	1726203-2RS1	SC203	CS203LLU	CS203DDU
20	47	14	1726204-2RS1	SC204	CS204LLU	CS204DDU
25	52	15	1726205-2RS1	SC205	CS205LLU	CS205DDU
30	62	16	1726206-2RS1	SC206	CS206LLU	CS206DDU
35	72	17	1726207-2RS1	SC207	CS207LLU	CS207DDU
40	80	18	1726208-2RS1		CS208LLU	CS208DDU
45	85	19	1726209-2RS1			CS209DDU
50	90	20	1726210-2RS1			CS210DDU
25	62	17	1726305-2RS1			CS305DDU
30	72	19	1726306-2RS1			CS306DDU
35	80	21	1726307-2RS1			CS307DDU
40	90	23	1726308-2RS1			CS308DDU
45	100	25	1726309-2RS1			CS309DDU
50	110	27	1726310-2RS1			CS310DDU

Disc harrow bearings



Triple lip seal

Square Bore

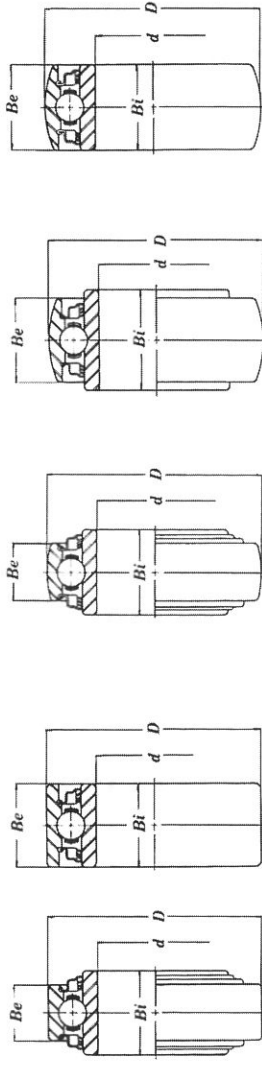


Cylindrical O.D.

Spherical O.D.

d	D	Be	Bi	Type	Designation	Fed. Mogul.	NTN	RHP	JAF
1.0000	80mm	18mm	1.4375	1	W208PP6	DC208TT6	5AS08-1	2/DF240/8	SQ108-100
1.1250	80mm	18mm	1.4375	1	W208PP5	DC208TT5	5AS08-1-1/8	2/DF240/9	SQ108-102
1.1250	80mm	1.1875	1.4375	1	W208PP8	DC208TT8	6AS08-1-1/8	PDF240/9	SQ108-102X
1.5000	100mm	1.3125	1.3125	2	W211PP3	DC211TT3	7AS11-1-1/2	PDF155/12	WSQ111-108
0.8750	80mm	18mm	1.4375	3	W208PPB13	DS208TT13	1AS08-7/8		SQ208-014
1.0000	80mm	18mm	1.4375	3	W208PPB6	DS208TT6		2/DNF240/8	SQ208-100
1.0000	80mm	1.1875	1.4375	4	W208PPB9	DS208TT9	2AS08-1	PDNF240/8	SQ208-100X
1.1250	80mm	18mm	1.4375	3	W208PPB5	DS208TT5	1AS08-1-1/8	2/DNF240/9	SQ208-102
1.1250	80mm	1.1875	1.4375	4	W208PPB8	DS208TT8	2AS08-1-1/8	PDNF240/9	SQ208-102X
1.1250	86mm	1.1875	1.4375	4	W208PPB12	DS208TT12	4AS08-1-1/8		SQ1208-102
1.2500	85mm	1.1875	1.4375	4	W209PPB5	DS209TT5	2AS09-1-1/4	PDNF245/10	SQ209-104
1.1250	90mm	1.1875	1.1875	5	W210PPB4	DS210TT5	2AS10-1-1/8	PDNF150/9	SQ210-102
1.1250	90mm	1.1875	1.4375	4	W210PPB6	DS210TT6	3AS10-1-1/8	PDNF250/9	WSQ211-108
1.5000	100mm	1.3125	1.3125	5	W211PPB3	DS211TT3	3AS11-1-1/2	PDNF155/12	SQ1211-108
1.5000	4.1300	1.4375	1.7500	4	W211PPB6	DS211TT6	4AS11-1-1/2		SQ1211-108

Disc harrow bearings

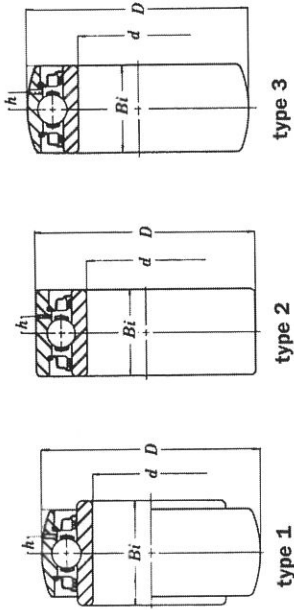


Triple lip seal
Round Bore

Cylindrical O.D. Spherical O.D.

d	D	Be	Bi	Type	Designation	Fed. Mogul.	NTN	RHP	JAF
1.15005	80mm	21mm	1.6875	1	W208PP10	DC208TT10	5AC08-1-1/2	36/DF140-1.1/2	
1.9380	90mm	1.1875	1.1875	2	W210PP2	DC210TT2	7AC10-1-15/16	PDF150-1.15/16	
2.1880	100mm	1.3125	1.3125	2	W211PP2	DC211TT2	7AC11-2-13/16	PDF155-2.3/16	
70mm	125mm	1.5625	1.5625	2	W214PP2				
1.1880	80mm	1.1875	1.1875	5	W208PPB4	DS208TT4		PDNF140-1.3/16	WSQ210-102
1.1880	80mm	18mm	1.1875	3	W208PPB7	DS208TT7	1AC08-1-13/16	2/DNF140-1.3/16	
1.5005	80mm	1.1875	1.6875	4	W208PPB2	DS208TT2A	2AC08-1-1/2	36/PDNF140-1.1/2	
45mm	85mm	1.1875	1.1875	5	W209PPB2	DS209TT2	3AC09	PDNF145/45	
1.5350	85mm	1.1875	1.1875	5	W209PPB4	DS209TT4	3AC09-1-1/2	28/PDNF145-1.1/2	
1.9380	90mm	1.1875	1.1875	5	W210PPB2	DS210TT2	3AC10-1-15/16	PDNF150-1.15/16	
1.7850	90mm	1.1875	1.1875	5	W210PPB5	DS210TT5	3AC10-1-3/4		
2.1880	100mm	1.3125	1.3125	5	W211PPB2	DS211TT2	3AC11-2-3/16	PDNF155-2.3/16	
70mm	125mm	1.5625	1.5625	5	W214PPB2				

Disc harrow bearings Regreasable



Triple lip seal
Square Bore

d	D	Be	Bi	Type	Designation	Fed. Mogul.	NTN	NSK/RHP	JAF
1.1250	90mm	1.1875	1.1875	2	GW210PP4	DC210TTR4	7AS101108D1	PDF150/9G	GWSQ110-102
1.5000	100mm	1.3125	1.3125	2	GW211PP3	DC211TTR3	7AS11-1-1/2D1	PDF155/12G	GWSQ111-108
1.0000	80mm	21mm	1.4375	1	GW208PPB6	DS208TTR6	1AS08-1D1	PDNF240-9G	GSQ208-100A
1.1250	80mm	1.1875	1.4375	1	GW208PPB8	DS208TTR8	2AS08-1-1/8D1	PDNF155/12G	GSQ208-102XA
1.5000	100mm	1.3125	1.3125	3	GW211PPB3	DS211TTR3	3AS11-1-1/2D1		GWSQ211-108
Round Bore									
d	D	Be	Bi	Type	Designation	Fed. Mogul.	NTN	NSK/RHP	JAF
1.4065	90mm	1.1875	1.1875	2	GW210PP3	DC210TTR3	7AC10-1.318D1		
2.1880	100mm	1.3125	1.3125	2	GW211PP2	DC211TTR2	7AC11-2-3/16D1	PDF155-2.3/16G	
1.6600	100mm	1.3125	1.3125	2	GW211PP4	DC211TTR4	7AC11-1-5/8D1		
1.9380	90mm	1.1875	1.1875	3	GW210PPB2	DS210TTR2	3AC10-1-15/16D1	PDNF150-1.15/16G	
2.1880	100mm	1.3125	1.3125	3	GW211PPB2	DS211TTR2	3AC11-2-3/16D1	PDNF155-2.3/16G	

THE 2RF SEAL



THE FIRST MULTI-FUNCTION SEALING SYSTEM

The most effective seal ever produced for y-bearing units. Simple yet effective. The best sealing performance ever achieved in the prevention of ingress of solids and liquids, thanks to the combination of the centrifugal effect of the finger and lip design.

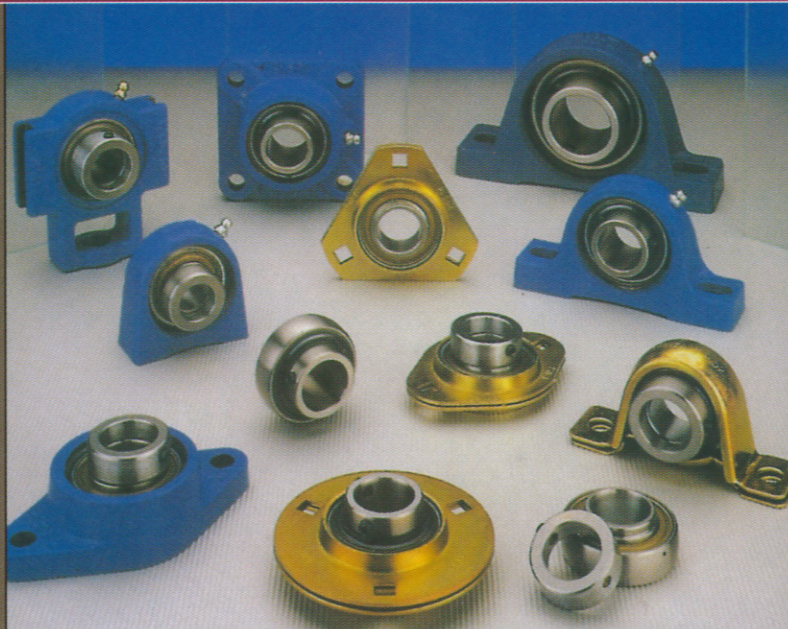
THIS OFFERS OUTSTANDING SEALING EFFECTIVENESS, BETTER THAN TRIPLE LIP ARRANGEMENTS, AGAINST:

dust • mud • fibres • sand & stones

THE 2RF SEAL

SKF

MORE THAN JUST BEARINGS



AVAILABLE FROM YOUR LOCAL SKF DISTRIBUTOR

WAIKATO BEARINGS LIMITED

11 Northway Street
Te Rapa, Hamilton

P: 07 850 6155 - F: 07 850 6144

E: sales@waikatobearings.co.nz

WWW.WAIKATOBEARINGS.CO.NZ



SKF Distributor

Bearings and Power Transmission

www.skf.co.nz