



FK **ROD** **ENDS**



TO FINISH FIRST - YOU MUST FIRST FINISH



TABLE OF CONTENTS

CM / CF	2-pc economy series Rod Ends	3
ECM / ECF	2-pc economy import series Rod Ends	4
CM-M/CF-M	2-pc economy metric series Rod Ends	5
JMX -MT	3-pc high strength alloy metric series Rod Ends	6
CMX / CFX	2-pc economy 4130 alloy black series Rod Ends	7/8
JM/JMX	3-pc precision male series Rod Ends	9
JF/JFX	3-pc precision female series Rod Ends	10
KMX	3-pc alloy male, nylon series Rod Ends	11
ALJM/ALJMH/ALJF	3-pc aluminum series Rod Ends	12
RSM/RSMX/ALRSM	3-pc extra strength male series Rod Ends	13/14
HJMXT/HRSMXT/HINT	high misalignment series	15
PMX-T/PMXL-T	3-pc high strength male 4340 alloy series Rod Ends	16
SCM-T / SCF-T	2-pc economy stainless steel series Rod Ends	17
SJM-T/SJF-T/SRSM-T	3-pc high strength stainless steel series Rod Ends	18
COM / FKS/FKSSX	Spherical Bearings	19
WSSX-T / WSSX-TV	wide,stainless steel series Spherical Bearings	20
AIN/CP	Spherical Bearing and Bearing Cups	21
HB/CTR	high misalignment spacers and center flnders	22
RD/CV	solid rod eyes, clevis and adjuster ladder	23
SPECIAL PRODUCTS	jam nuts, nas style bolt, studded rod ends	24
TUBE ENDS	weldable 4130 alloy steel tube ends	25

F.K. Bearings reserves the right to change specifications and other information included in this catalog without notice. All information, data, and dimensions tables in this catalog have been carefully compiled and thoroughly checked. However, no responsibility for possible errors or omissions can be assumed.

WARNING! The manufacturer can not determine all applications of it's products. It is up to the customer to determine a suitable part for their application. For assistance, please contact FK's Engineering Department.



What began as a dream over 25 years ago has quietly grown to one of the biggest automotive aftermarket manufacturers in the U.S.

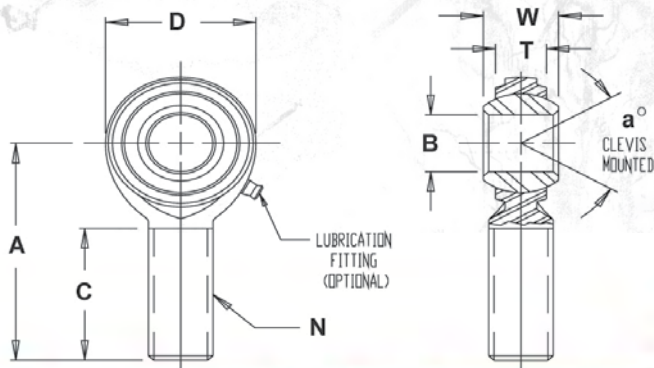
Our patriarch, Frank Fragola, began making rod ends and other bearing components on a small screw machine in his spare time, while working to support his growing family. Now, 25 years later, FK Bearings has grown to a 100,000 sq ft facility producing tens of thousands of parts every day.

It is not just our products that make FK Rod ends stand out from other automotive aftermarket companies. We are a family-owned business that takes pride in offering a higher level of customer service. When you call FK you will not get an answering service - you get a live person who is a rod end and bearing expert. We know our products inside and out and give you instantaneous answers to any questions. With almost 10,000 combinations of rod ends and spherical bearings available, you will appreciate the effort that goes into filling each order, having one of the highest fill rates in the industry and offering same day shipping on over 95% of all part numbers.



CM/CF

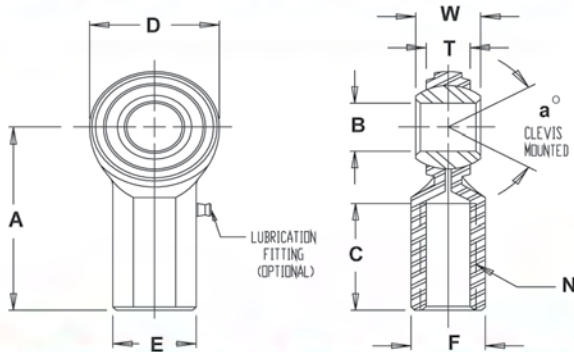
- Economy line of rod ends
- 2-Piece, Metal to Metal
- Ball made of 52100 steel and hard chrome plated
- Body constructed using low carbon steel, zinc plated and chromate treated
- Frequently used in applications that doesn't require high impact loads
- Teflon® liners available



MATERIALS

BALL	BODY
52100 STEEL	LOW CARBON STEEL
Rc 56 MIN.	ZINC PLATED
HARD CHROME PLATED	CHROMATE TREATED

MALE ROD ENDS		B DIA.	D DIA.	W WIDTH	T WIDTH	BALL DIA.	A LGTH	N THD.	C LGTH	a' MIS. ANGLE	ULT. STATIC RADIAL LOAD (LBS.)		APPROX. WEIGHT (lbs.)
RIGHT HAND PART NO.	LEFT HAND PART NO.	+0.0025 -0.0005	+0.010 -0.010	+0.005 -0.005	REF.	REF.	+0.015 -0.015	UNF 3A	+0.062 -0.031	REF.	METAL TO METAL	**TEFLON LINED	
CM3*	CML3*	.1900	.625	.312	.234	.437	1.250	10-32	.750	20	1,210	902	.03
CM4*	CML4*	.2500	.750	.375	.250	.500	1.562	1/4-28	1.000	27	2,225	1,809	.04
CM5*	CML5*	.3125	.875	.437	.312	.625	1.875	5/16-24	1.250	22	3,600	2,984	.07
CM6	CML6	.3750	1.000	.500	.359	.719	1.938	3/8-24	1.250	22	5,100	4,244	.11
CM7	CML7	.4375	1.125	.562	.406	.812	2.125	7/16-20	1.375	21	6,402	5,312	.15
CM8	CML8	.5000	1.312	.625	.453	.937	2.438	1/2-20	1.500	20	8,386	7,211	.24
CM10	CML10	.6250	1.500	.750	.484	1.125	2.625	5/8-18	1.625	26	9,813	8,403	.36
CM12	CML12	.7500	1.750	.875	.593	1.312	2.875	3/4-16	1.750	24	14,290	12,321	.57



*GREASE FITTINGS ARE NOT SUPPLIED ON THESE SIZES.
 MALE ROD END LOAD RATINGS BASED ON NO LUBRICATING FITTING.
 FOR LOAD RATINGS WITH LUBRICATOR, PLEASE CONTACT THE
 F.K. ENGINEERING DEPARTMENT.
 ** A trade mark of E.I. DuPont de Nemours & Co., Inc.

MATERIALS

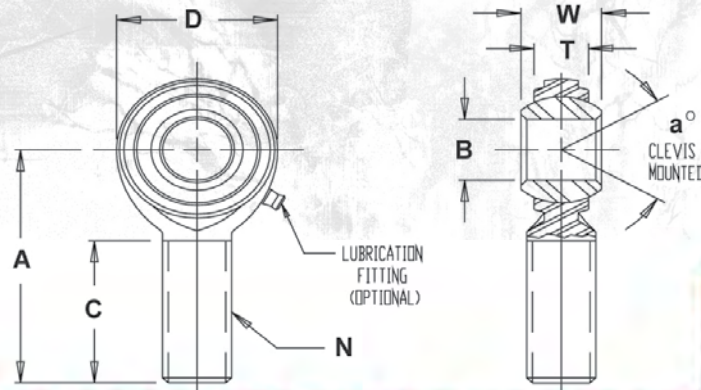
BALL	BODY
52100 STEEL	LOW CARBON STEEL
Rc 56 MIN.	ZINC PLATED
HARD CHROME PLATED	CHROMATE TREATED

FEMALE ROD ENDS		B DIA.	D DIA.	W WIDTH	T WIDTH	BALL DIA.	A LGTH	N THD.	C LGTH	E DIA.	F FLAT	a' MIS. ANG.	ULTI. STATIC RADIAL LOAD (LBS.)	
RIGHT HAND PART NO.	LEFT HAND PART NO.	+0.0025 -0.0005	+0.010 -0.010	+0.005 -0.005	REF.	REF.	+0.015 -0.015	UNF 2B	+0.062 -0.031	+0.010 -0.010	+0.010 -0.010	REF.	METAL TO METAL	**TEFLON LINED
CF3*	CFL3*	.1900	.625	.312	.234	.437	1.062	10-32	.500	.406	.312	20	2,100	1,637
CF4-3	N/A	.2500	.750	.375	.250	.500	1.312	10-32	.687	.468	.375	27	3,250	-
CF4	CFL4	.2500	.750	.375	.250	.500	1.312	1/4-28	.687	.468	.375	27	3,250	2,612
CF5	CFL5	.3125	.875	.437	.312	.625	1.375	5/16-24	.687	.500	.437	22	3,934	3,110
CF6	CFL6	.3750	1.000	.500	.359	.719	1.625	3/8-24	.812	.687	.562	22	5,100	4,206
CF7	CFL7	.4375	1.125	.562	.406	.812	1.812	7/16-20	.937	.750	.625	21	6,420	5,384
CF8	CFL8	.5000	1.312	.625	.453	.937	2.125	1/2-20	1.062	.875	.750	20	9,100	7,826
CF10	CFL10	.6250	1.500	.750	.484	1.125	2.500	5/8-18	1.375	1.000	.875	26	9,800	8,343
CF12	CFL12	.7500	1.750	.875	.593	1.312	2.875	3/4-16	1.562	1.125	1.000	24	14,250	12,342

NOTES: 1. FOR GREASE FITTINGS ADD "Z" TO SUFFIX. EXAMPLE: CF6Z
 2. FOR TEFLON LINER ADD "T" TO SUFFIX. EXAMPLE: CM10T
 3. FOR STUD ADD "Y" TO SUFFIX. EXAMPLE: CF8Y

ECM/ECF

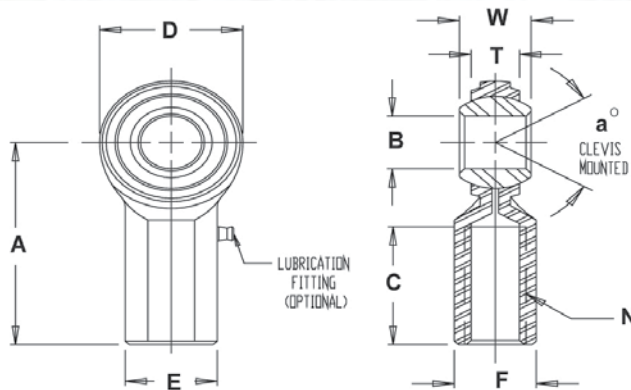
- Economy line of rod ends
- 2-Piece, Metal to Metal
- Ball made of 52100 steel and hard chrome plated
- Body constructed using low carbon steel, zinc plated and chromate treated
- Frequently used in applications that doesn't require high impact loads
- Imported



MATERIALS

BALL	BODY
ALLOY STEEL	LOW CARBON STEEL
HEAT TREATED	ZINC PLATED
HARD CHROME PLATED	CHROMATE TREATED

MALE ROD ENDS		B DIA.	D DIA.	W WIDTH	T WIDTH	BALL DIA.	A LGTH	N THD.	C LGTH	a° MIS. ANGLE	ULT. STATIC RADIAL LOAD (lbs.)	APPROX. WEIGHT (lbs.)
RIGHT HAND PART NO.	LEFT HAND PART NO.	+0.0025 -0.0005	+0.010 -0.010	+0.005 -0.005	REF.	REF.	+0.015 -0.015	UNF 3A	+0.062 -0.031	REF.		
ECM3*	ECML3*	.1900	.625	.312	.234	.437	1.250	10-32	.750	20	1,210	.03
ECM4*	ECML4*	.2500	.750	.375	.250	.500	1.562	1/4-28	1.000	27	2,225	.04
ECM5*	ECML5*	.3125	.875	.437	.312	.625	1.875	5/16-24	1.250	22	3,600	.07
ECM6	ECML6	.3750	1.000	.500	.359	.719	1.938	3/8-24	1.250	22	5,100	.11
ECM7	ECML7	.4375	1.125	.562	.406	.812	2.125	7/16-20	1.375	21	6,402	.15
ECM8	ECML8	.5000	1.312	.625	.453	.937	2.438	1/2-20	1.500	20	8,386	.24
ECM10	ECML10	.6250	1.500	.750	.484	1.125	2.625	5/8-18	1.625	26	9,813	.36
ECM12	ECML12	.7500	1.750	.875	.593	1.312	2.875	3/4-16	1.750	24	14,290	.57



*GREASE FITTINGS ARE NOT SUPPLIED ON THESE SIZES.
MALE ROD END LOAD RATINGS BASED ON NO LUBRICATING FITTING.
FOR LOAD RATINGS WITH LUBRICATOR, PLEASE CONTACT THE
F.K. ENGINEERING DEPARTMENT.

MATERIALS

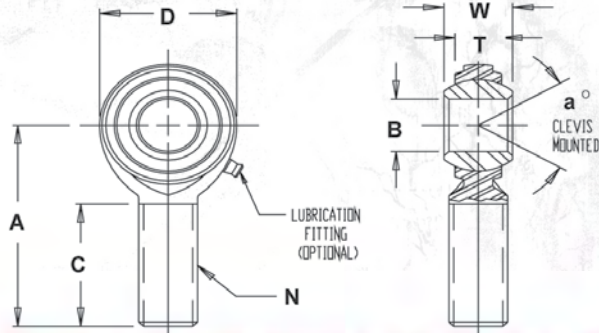
BALL	BODY
ALLOY STEEL	LOW CARBON STEEL
HEAT TREATED	ZINC PLATED
HARD CHROME PLATED	CHROMATE TREATED

FEMALE ROD ENDS		B DIA.	D DIA.	W WIDTH	T WIDTH	BALL DIA.	A LGTH	N THD.	C LGTH	E DIA.	F FLAT	a° MIS. ANGLE	ULT. STATIC RADIAL LOAD (lbs.)	APPROX. WEIGHT (lbs.)
RIGHT HAND PART NO.	LEFT HAND PART NO.	+0.0025 -0.0005	+0.010 -0.010	+0.005 -0.005	REF.	REF.	+0.015 -0.015	UNF 2B	+0.062 -0.031	+0.010 -0.010	+0.010 -0.010	REF.		
ECF3*	ECFL3*	.1900	.625	.312	.234	.437	1.062	10-32	.500	.406	.312	20	2,100	.04
ECF4	ECFL4	.2500	.750	.375	.250	.500	1.312	1/4-28	.687	.468	.375	27	3,250	.05
ECF5	ECFL5	.3125	.875	.437	.312	.625	1.375	5/16-24	.687	.500	.437	22	3,934	.08
ECF6	ECFL6	.3750	1.000	.500	.359	.719	1.625	3/8-24	.812	.687	.562	22	5,100	.13
ECF7	ECFL7	.4375	1.125	.562	.406	.812	1.812	7/16-20	.937	.750	.625	21	6,420	.18
ECF8	ECFL8	.5000	1.312	.625	.453	.937	2.125	1/2-20	1.062	.875	.750	20	9,100	.29
ECF10	ECFL10	.6250	1.500	.750	.484	1.125	2.500	5/8-18	1.375	1.000	.875	26	9,800	.43
ECF12	ECFL12	.7500	1.750	.875	.593	1.312	2.875	3/4-16	1.562	1.125	1.000	24	14,250	.65

NOTES: FOR GREASE FITTINGS ADD "Z" TO SUFFIX. EXAMPLE: ECF6Z

CM-M/CF-M

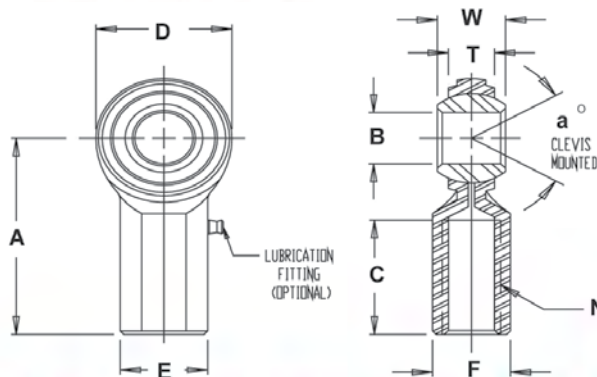
- Economy line of metric rod ends
- 2-Piece, Metal to Metal
- Ball made of 52100 steel and hard chrome plated
- Body constructed using low carbon steel, zinc plated and chromate treated
- Frequently used in applications that doesn't require high impact loads



MATERIALS

BALL	BODY
52100 STEEL	LOW CARBON STEEL
HEAT TREATED	ZINC PLATED
HARD CHROME PLATED	CHROMATE TREATED

MALE ROD ENDS		B DIA.	D DIA.	W WIDTH	T WIDTH	BALL DIA.	A LGTH	N THD.	C LGTH	a° MIS. ANGLE	ULT. STATIC RADIAL LOAD Newtons	APPROX. WEIGHT (GRAMS)
RIGHT HAND PART NO.	LEFT HAND PART NO.	+0.065 -0.012	+0.38 -0.38	+0.12 -0.12	REF.	REF.	+0.40 -0.40	THREAD	+1.00 -1.00	REF.		
CM5M*	CML5M*	5	16	8	5.75	11.10	33	M5 X 0.8	20	22	5,168	12
CM6M*	CML6M*	6	19	9	6.25	12.70	36	M6 X 1.0	22	23	7,296	18
CM8M*	CML8M*	8	22.25	12	8.0	15.88	42	M8 X 1.25	25	28	13,591	31
CM10M	CML10M	10	27	14	9.5	19.05	48	M10 X 1.5	29	26	21,024	68
CM10MF	CML10MF	10	27	14	9.5	19.05	48	M10 X 1.25	29	26	21,024	68
CM12M	CML12M	12	30	16	10.75	22.23	54	M12 X 1.75	33	27	25,819	78
CM12MF	CML12MF	12	30	16	10.75	22.23	54	M12 X 1.25	33	27	25,819	78
CM14M	CML14M	14	34.75	19	12.25	25.40	60	M14 X 2.0	36	30	35,214	118
CM16M	CML16M	16	38	21	12.75	28.58	66	M16 X 2.0	40	33	37,391	173
CM18M	CML18M	18	42	23	14.75	31.75	72	M18 X 1.5	44	30	47,903	260
CM20M	CML20M	20	46	25	16.25	34.93	78	M20 X 1.5	47	29	57,101	290



*GREASE FITTINGS ARE NOT SUPPLIED ON THESE SIZES.
 MALE ROD END LOAD RATINGS BASED ON NO LUBRICATING FITTING.
 FOR LOAD RATINGS WITH LUBRICATOR, PLEASE CONTACT THE
 F.J. ENGINEERING DEPARTMENT.

MATERIALS

BALL	BODY
52100 STEEL	LOW CARBON STEEL
HEAT TREATED	ZINC PLATED
HARD CHROME PLATED	CHROMATE TREATED

FEMALE ROD ENDS		B DIA.	D DIA.	W WIDTH	T WIDTH	BALL DIA.	A LGTH	N THD.	C LGTH	E DIA.	F FLAT	a° MIS. ANG.	ULT. STATIC RADIAL LOAD Newtons	APPROX. WEIGHT (GRAMS)
RIGHT HAND PART NO.	LEFT HAND PART NO.	+0.065 -0.012	+0.38 -0.38	+0.12 -0.12	REF.	REF.	+0.40 -0.40	THREAD	+1.00 -1.00	+0.25 -0.25	+0.25 -0.25	REF.		
CF5M*	CFL5M*	5	16	8	5.75	11.10	27	M5 X 0.8	14	11	9	22	8,247	18
CF6M	CFL6M	6	19	9	6.25	12.70	30	M6 X 1.0	14	13	11	23	11,895	25
CF8M	CFL8M	8	22.25	12	8.0	15.88	36	M8 X 1.25	17	16	14	28	15,190	40
CF10M	CFL10M	10	27	14	9.5	19.05	43	M10 X 1.5	21	19	17	26	22,750	80
CF10MF	CFL10MF	10	27	14	9.5	19.05	43	M10 X 1.25	21	19	17	26	22,750	80
CF12M	CFL12M	12	30	16	10.75	22.23	50	M12 X 1.75	24	22	19	27	25,819	95
CF12MF	CFL12MF	12	30	16	10.75	22.23	50	M12 X 1.25	24	22	19	27	25,819	95
CF14M	CFL14M	14	34.75	19	12.25	25.40	57	M14 X 2.0	27	25	22	30	35,214	160
CF16M	CFL16M	16	38	21	12.75	28.58	64	M16 X 2.0	33	27	22	33	37,391	215
CF18M	CFL18M	18	42	23	14.75	31.75	71	M18 X 1.5	36	28.58	25.4	30	47,903	300
CF20M	CFL20M	20	46	25	16.25	34.93	77	M20 X 1.5	40	30.15	27	29	57,101	350

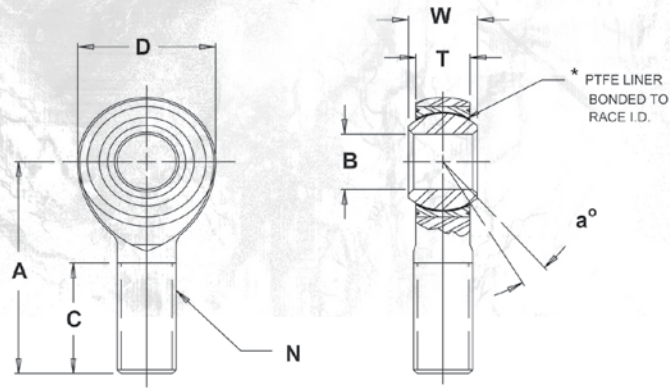
JMX-MT Metric

3-PIECE METRIC, PRECISION-WEAR RESISTANT WITH PTFE LINER



JMX-MT

- 3-Piece, precision wear resistant metric rod ends
- Ball is made of 52100 steel, heat treated and hard chrome plated
- Race is alloy steel, heat treated, zinc plated and chromate treated
- Body is alloy steel, heat treated, zinc plated and chromate treated
- Teflon® liners available

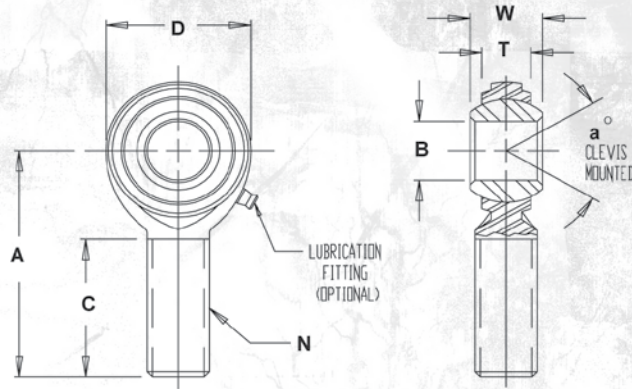


MALE ROD ENDS		B DIA.	D DIA.	W WIDTH	T WIDTH	BALL DIA.	A LGTH	N THREAD	C LGTH	a° MIS ANG	ULT. STATIC RADIAL LOAD NEWTONS	APPROX. WEIGHT GRAMS
RIGHT HAND PART NO.	LEFT HAND PART NO.	+065 -013	+38 -38	+12 -12	+13 -13	REF.	+40 -40	THREAD	+1.00 -1.00	REF.		
JMX6MT	JMXL6MT	6	19	9	7	12.70	36	M6 X 1.0	22	13	17,725	18
JMX8MT	JMXL8MT	8	22.25	12	8.75	15.88	42	M8 X 1.25	25	18	33,137	31
JMX10MT	JMXL10MT	10	27	14	10.5	19.05	48	M10 X 1.5	29	17	50,225	68
JMX12MT	JMXL12MT	12	30	16	12	22.23	54	M12 X 1.75	33	17	44,487	78
JMX14MT	JMXL14MT	14	34.75	19	13.50	25.40	60	M14 X 2.0	36	21	71,745	118
JMX16MT	JMXL16MT	16	38	21	14.25	28.58	66	M16 X 2.0	40	23	76,290	173

* A trade mark of E.I. Dupont de Nemours & Co., Inc.

BODY	BALL	RACE	LINER
ALLOY STEEL HEAT TREATED ZINC PLATED, CHROMATE TREATED	52100 STEEL HEAT TREATED HARD CHROME PLATED	ALLOY STEEL HEAT TREATED ZINC PLATED	*TEFLON FABRIC





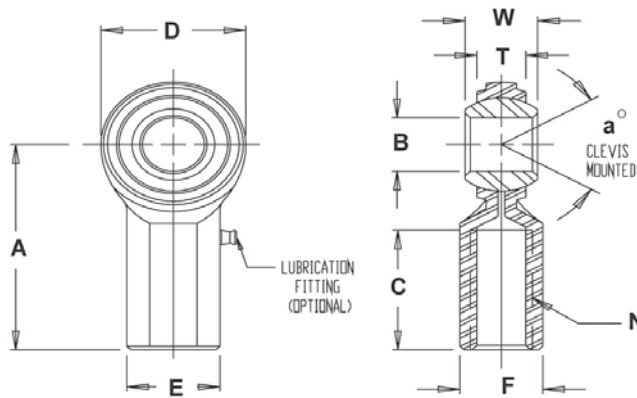
MATERIALS

BODY
ALLOY STEEL
HEAT TREATED
BLACK OXIDE TREATED
BALL
52100 STEEL
Rc 56 MIN. HARD
HARD CHROME PLATED

MALE ROD ENDS		B DIA.	D DIA.	W WIDTH	T WIDTH	BALL DIA.	A LGTH	N THD.	C LGTH	a° MIS. ANGLE	ULT. STATIC RADIAL LOAD (LBS.)		APPROX. WEIGHT (lbs)
RIGHT HAND PART NO.	LEFT HAND PART NO.	+0.0025 -0.0005	+0.010 -0.010	+0.005 -0.005	REF.	REF.	+0.015 -0.015	UNF 3A	+0.062 -0.031	REF.	METAL TO METAL	**TEFLON LINED	
CMX8	CMXL8	.5000	1.312	.625	.453	.937	2.438	1/2-20	1.500	20	17,000	14,500	.24
CMX10-8	CMXL10-8	.5000	1.500	.750	.484	1.125	2.625	5/8-18	1.625	26	18,000	15,200	.30
CMX10	CMXL10	.6250	1.500	.750	.484	1.125	2.625	5/8-18	1.625	26	18,000	15,200	.36
CMX12-8	CMXL12-8	.5000	1.750	.875	.593	1.312	2.875	3/4-16	1.750	24	25,000	21,400	.57
CMX12-10	CMXL12-10	.6250	1.750	.875	.593	1.312	2.875	3/4-16	1.750	24	25,000	21,400	.57
CMX12	CMXL12	.7500	1.750	.875	.593	1.312	2.875	3/4-16	1.750	24	25,000	21,400	.57

MALE ROD END LOAD RATINGS BASED ON NO LUBRICATING FITTING. FOR LOAD RATING WITH LUBRICATOR, PLEASE CONTACT THE FK ENGINEERING DEPARTMENT.

** A trade mark of E.I. DuPont de Nemours & Co., Inc.



MATERIALS

BODY
ALLOY STEEL
HEAT TREATED
BLACK OXIDE TREATED
BALL
52100 STEEL
Rc 56 MIN. HARD
HARD CHROME PLATED

FEMALE ROD ENDS		B DIA.	D DIA.	W WIDTH	T WIDTH	BALL DIA.	A LGTH	N THD.	C LGTH	E DIA.	F FLAT	a° MIS. ANG.	ULT. STATIC RADIAL LOAD (LBS.)	
RIGHT HAND PART NO.	LEFT HAND PART NO.	+0.0025 -0.0005	+0.010 .010	+0.005 -0.005	REF.	REF.	+0.015 -0.015	UNF 2B	+0.062 -0.031	+0.010 -0.010	+0.010 -0.010	REF.	METAL TO METAL	**TEFLON LINED
CFX8	CFXL8	.5000	1.312	.625	.453	.937	2.125	1/2-20	1.062	.875	.750	20	17,000	14,500
CFX10	CFXL10	.6250	1.500	.750	.484	1.125	2.500	5/8-18	1.375	1.000	.875	26	18,000	15,200
CFX12	CFXL12	.7500	1.750	.875	.593	1.312	2.875	3/4-16	1.562	1.125	1.000	24	25,000	21,400

CMX - Black Series Male Rod Ends

- Economy high strength rod ends
- 2-Piece, Metal to Metal
- Ball made of 52100 steel and hard chrome plated
- Body constructed using alloy steel, heat treated and black oxide finish
- Teflon® liners available

CFX - Black Series Female Rod Ends NEW for 2011

- Economy high strength rod ends
- 2-Piece, Metal to Metal
- Ball made of 52100 steel and hard chrome plated
- Body constructed using alloy steel, heat treated and black oxide finish
- Teflon® liners available

FK now offers a female version of it's most popular 2pc black male series. Now in stock and ready to ship.



**FK
ROD
ENDS**

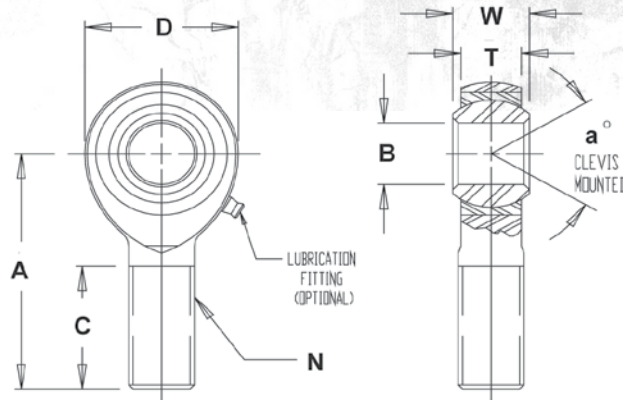


JM

- 3-Piece, precision wear resistant rod ends
- Ball is made of 52100 steel, heat treated and hard chrome plated
- Race is heat treated steel alloy, zinc plated and chromate treated
- Body is low carbon steel, zinc plated and chromate treated
- Teflon® liners available

JMX

- 3-Piece, precision wear resistant rod ends
- Ball is made of 52100 steel, heat treated and hard chrome plated
- Race is heat treated steel alloy, zinc plated and chromate treated
- Body is alloy steel, heat treated, zinc plated and chromate treated
- Teflon® liners available



SIZE	B DIA.	D DIA.	W WIDTH	T WIDTH	BALL DIA.	A LGTH	N THD.	C LGTH	a° MIS ANGLE	ULT. STATIC RADIAL LOAD (LBS.)		APPROX. WEIGHT
	+0.015 -0.005	+0.010 -0.010	+0.000 -0.005	+0.005 -0.005	REF.	+0.015 -0.015	UNF 3A	+0.062 -0.031	REF.	JM	JMX	
2	.1250	.500	.250	.187	.312	.937	6-32 UNC	.562	16	500	-	.013
3	.1900	.625	.312	.250	.437	1.250	10-32	.750	13	1,174	2,855	.03
4	.2500	.750	.375	.281	.500	1.562	1/4-28	1.000	16	2,168	5,262	.04
5	.3125	.875	.437	.344	.625	1.875	5/16-24	1.250	14	2,796	7,640	.07
6	.3750	1.000	.500	.406	.719	1.938	3/8-24	1.250	12	4,012	9,550	.11
7	.4375	1.125	.562	.437	.812	2.125	7/16-20	1.375	14	4,244	10,290	.16
8	.5000	1.312	.625	.500	.937	2.438	1/2-20	1.500	12	6,700	16,242	.25
8-6	.3750	1.312	.625	.500	.937	2.438	1/2-20	1.500	12	-	16,242	.27
10	.6250	1.500	.750	.562	1.125	2.625	5/8-18	1.625	16	7,400	17,959	.38
12	.7500	1.750	.875	.687	1.312	2.875	3/4-16	1.750	14	11,550	28,090	.60
14	.8750	2.000	.875	.687	1.312	3.375	7/8-14	1.875	12	-	55,690	.91
14T-770	.8750	2.000	.875	.770	1.375	3.375	7/8-14	1.875	12	-	45,051	.91
16**	1.0000	2.950	1.375	1.015	1.875	4.500	1-1/4-12	2.500	17	43,555	107,182	2.736
16-1**	1.0000	2.950	1.375	1.015	1.875	4.500	1-14	2.500	17	43,555	107,182	2.464
16-2**	1.0000	2.950	1.375	1.015	1.875	4.500	1-12	2.500	17	43,555	-	2.464

MALE ROD END LOAD RATINGS BASED ON NO LUBRICATION FITTING. FOR LOAD RATINGS OF ROD ENDS WITH LUBRICATOR, PLEASE CONTACT THE F.K. ENGINEERING DEPARTMENT.

* A trade mark of E.I. Dupont de Nemours & Co., Inc.

** TOLERANCE VARIATION: "D", "A" ARE +/- .020

"T" TOLERANCE ON JM SERIES IS +/-0.015

BALL	RACE
52100 STEEL	STEEL ALLOY, HEAT TREATED
HEAT TREATED	ZINC PLATED
HARD CHROME PLATED	CHROMATE TREATED

BODY	
JM-	LOW CARBON STEEL ZINC PLATED, CHROMATE TREATED AVAILABLE IN SIZES 2-16
JMX-	ALLOY STEEL, HEAT TREATED ZINC PLATED, CHROMATE TREATED AVAILABLE IN SIZES 3-16

NOTES:

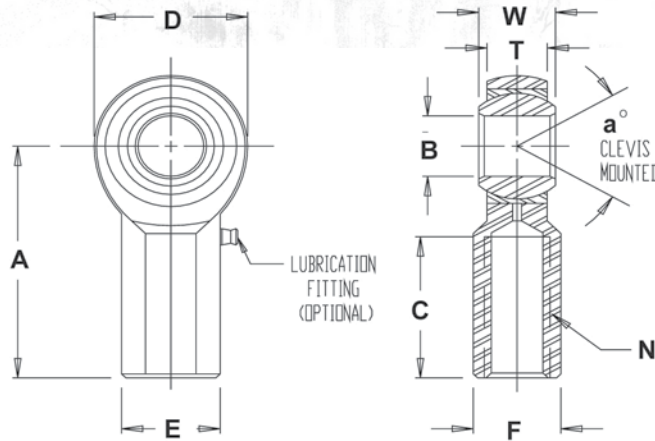
1. FOR GREASE FITTINGS ADD "Z" TO SUFFIX.
EXAMPLE: JMX6Z
2. FOR STUDS ADD "Y" TO SUFFIX.
EXAMPLE: JMX5Y
3. FOR *TEFLON LINER ADD "T" TO SUFFIX.
EXAMPLE: JMX12T
4. FOR LEFT HAND THREAD ADD "L" TO PREFIX.
EXAMPLE JMXL12

JF

- 3-Piece, precision wear resistant rod ends
- Ball is made of 52100 steel, heat treated and hard chrome plated
- Race is heat treated steel alloy and zinc plated
- Body is low carbon steel, zinc plated and chromate treated
- Teflon® liners available

JFX

- 3-Piece, precision wear resistant rod ends
- Ball is made of 52100 steel, heat treated and hard chrome plated
- Race is heat treated steel alloy, zinc plated and chromate treated
- Body is alloy steel, heat and chromate treated, and zinc plated
- Teflon® liners available



SIZE	B DIA.	D DIA.	W WIDTH	T WIDTH	BALL DIA.	A LGTH	N THD.	C LGTH	E DIA.	F FLAT	a° MIS ANG.	(ALT. STATIC RADIAL LOAD (lbs.))		APPROX. WEIGHT
					REF.						REF.	JF	JFX	
2*	.1250	.500	.250	.187	.312	.812	6-32UNC	.437	.312	.250	16	1,210	-	.019
3	.1900	.625	.312	.250	.437	1.062	10-32	.500	.406	.312	13	1,624	3,736	.04
4	.2500	.750	.375	.281	.500	1.312	1/4-28	.687	.469	.375	16	2,545	6,195	.06
5	.3125	.875	.437	.344	.625	1.375	5/16-24	.687	.500	.437	14	3,200	7,640	.09
6	.3750	1.000	.500	.406	.719	1.625	3/8-24	.812	.687	.562	12	3,950	9,550	.15
7	.4375	1.125	.562	.437	.812	1.812	7/16-20	.937	.750	.625	14	4,300	10,290	.20
8	.5000	1.312	.625	.500	.937	2.125	1/2-20	1.062	.875	.750	12	6,700	15,340	.33
10	.6250	1.500	.750	.562	1.125	2.500	5/8-18	1.375	1.000	.875	16	7,400	17,959	.48
12	.7500	1.750	.875	.687	1.312	2.875	3/4-16	1.562	1.125	1.000	14	11,550	28,090	.72
16**	1.0000	2.750	1.375	1.000	1.875	4.125	1 1/4-12	2.125	1.625	1.500	17	40,893	76,205	2.125
16-1**	1.0000	2.750	1.375	1.000	1.875	4.125	1-14	2.125	1.625	1.500	17	43,555	76,205	2.410
16-2**	1.0000	2.750	1.375	1.000	1.875	4.125	1-12	2.125	1.625	1.500	17	43,555	-	2.410
24-1	1.5000	3.500	1.312	1.125	2.155	5.375	1 1/2-12	2.625	2.250	2.000	6.5	-	138,800	6.50

*GREASE FITTINGS & PTFE LINERS NOT AVAILABLE.

** TOLERANCE VARIATION: "D", "A" ARE +/- .020

"T" TOLERANCE ON JM SERIES IS +/- .015

*** A trade mark of E.I. DuPont de Nemours & Co., Inc.

BALL	RACE
52100 STEEL	ALLOY STEEL
HEAT TREATED	HEAT TREATED
HARD CHROME PLATED	ZINC PLATED

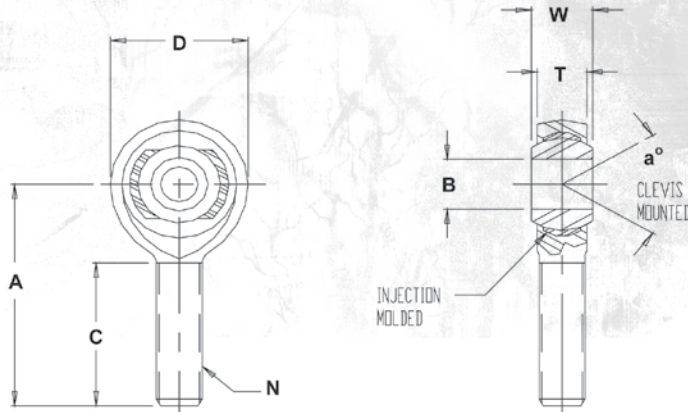
BODY	
JF-	LOW CARBON STEEL ZINC PLATED, CHROMATE TREATED AVAILABLE IN SIZES 2-16
JFX-	ALLOY STEEL, HEAT TREATED ZINC PLATED, CHROMATE TREATED AVAILABLE IN SIZES 3-24

NOTES:

1. FOR GREASE FITTINGS ADD "Z" TO SUFFIX.
EXAMPLE: JF6Z
2. FOR STUDS ADD "Y" TO SUFFIX.
EXAMPLE: JF5Y
3. FOR ***TEFLON LINER ADD "T" TO SUFFIX.
EXAMPLE: JF12T
4. FOR LEFT HAND THREADS ADD "L" TO PREFIX
EXAMPLE: JFL8

KMX

- 3pc injected nylon series
- Ball made of 52100 steel hard chrome plated
- Body constructed using alloy steel, heat treated and chrome plated
- Race is made of Nylon 10 or equivalent
- Imported Series



MALE ROD ENDS		B DIA.	D DIA.	W WIDTH	T WIDTH	BALL DIA.	A LGTH	N THD.	C LGTH	a° MIS. ANGLE	LLT. STATIC RADIAL LOAD (lbs)	APPROX. WEIGHT (lbs)
RIGHT HAND PART NO.	LEFT HAND PART NO.	+0.0025 -0.0005	+0.010 -0.010	+0.005 -0.005	+0.005 -0.005	REF.	+0.015 -0.015	UNF 3A	+0.062 -0.031	REF.		
KMX5	KMXL5	.3125	.875	.437	.344	.625	1.875	5/16-24	1.250	14	7,600	0.07
KMX6-5	KMXL6-5	.3125	.875	.437	.344	.625	1.875	3/8-24	1.250	14	7,600	0.07
KMX6	KMXL6	.3750	1.000	.500	.406	.719	1.938	3/8-24	1.250	12	9,500	0.11
KMX8	KMXL8	.5000	1.312	.625	.500	.937	2.438	1/2-20	1.500	12	12,696	.24
KMX10-8	KMXL10-8	.5000	1.500	.625	.500	.937	2.625	5/8-18	1.625	12	19,960	.36
KMX10	KMXL10	.6250	1.500	.750	.562	1.125	2.625	5/8-18	1.625	16	14,480	.36
KMX12-8	KMXL12-8	.5000	1.750	.750	.562	1.125	2.875	3/4-16	1.750	14	23,256	.57
KMX12-10	KMXL12-10	.6250	1.750	.750	.562	1.125	2.875	3/4-16	1.750	14	23,256	.57
KMX12	KMXL12	.7500	1.750	.875	.687	1.312	2.875	3/4-16	1.750	14	23,192	.57
KMX14	KMXL14	.8750	2.000	.875	.770	1.375	3.375	7/8-14	2.000	12	45,051	.88
KMX16	KMXL16	1.0000	2.750	1.375	1.000	1.875	4.125	1.250-12	2.125	17	76,200	2.41

MATERIALS

BALL	BODY
52100 STEEL Rc 56 MIN. HARD HARD CHROME PLATED	ALLOY STEEL, HEAT TREATED CHROME PLATED
RACE	
NYLON 10 OR EQUIVALENT	

NOTES:

FOR STUDS ADD "Y" TO SUFFIX.
EXAMPLE: KMX10Y

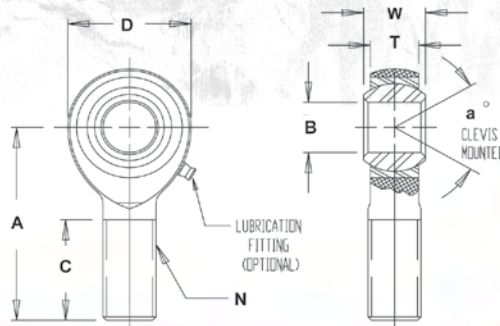


ALJM-ALJM-H

- 3-Piece, precision wear resistant rod ends
- Ball is made of 52100 steel, heat treated and hard chrome plated
- Race is heat treated steel alloy, zinc plated and chromate treated
- Body is 7075-T6 aluminum with hard red anodized finish
- Teflon® liners available add H for heavy duty

ALJF

- 3-Piece, precision wear resistant rod ends
- Ball is made of 52100 steel, heat treated and hard chrome plated
- Race is heat treated steel alloy and zinc plated
- Body is 7075-T6 aluminum with hard red anodized finish
- Teflon® liners available

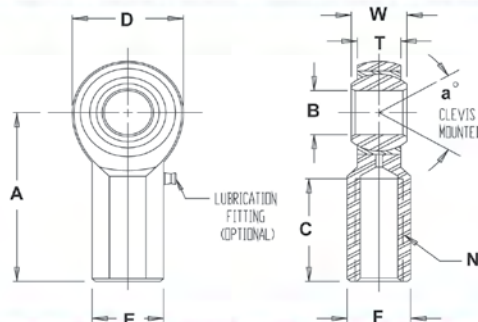


MATERIALS

BALL	BODY
52100 STEEL HEAT TREATED HARD CHROME PLATED	ALUMINUM 7075-T6 HARD ANODIZED RED
RACE	
ALLOY STEEL, HEAT TREATED ZINC PLATED, CHROMATE TREATED	

MALE ROD ENDS		B DIA.	D DIA.	W WIDTH	T WIDTH	BALL DIA.	A LGTH	N THD.	C LGTH	a° MIS ANGLE	ULT. STATIC RADIAL LOAD (lbs.)	APPROX. WEIGHT (lbs.)
RIGHT HAND PART NO.	LEFT HAND PART NO.	+0.015 -0.005	+0.010 -0.010	+0.000 -0.005	+0.005 -0.005	REF.	+0.015 -0.015	UNF 3A	+0.062 -0.031	REF.		
ALJM3	ALJML3	.1900	.625	.312	.250	.437	1.250	10-32	.750	13	1,360	.022
ALJM4	ALJML4	.2500	.750	.375	.281	.500	1.562	1/4-28	1.000	16	2,465	.034
ALJM5	ALJML5	.3125	.875	.437	.344	.625	1.875	5/16-24	1.250	14	2,850	.050
ALJM6	ALJML6	.3750	1.000	.500	.406	.719	1.938	3/8-24	1.250	12	4,208	.078
ALJM7	ALJML7	.4375	1.125	.562	.437	.812	2.125	7/16-20	1.375	14	4,534	.091
ALJM8	ALJML8	.5000	1.312	.625	.500	.937	2.438	1/2-20	1.500	12	7,698	.140
ALJMBH	ALJMLBH	.5000	1.500	.625	.500	.937	2.625	1/2-20	1.562	12	10,150	.140
ALJMB-6	ALJMLB-6	.3750	1.312	.625	.500	.937	2.438	1/2-20	1.500	12	7,698	.140
ALJM10	ALJML10	.6250	1.500	.750	.562	1.125	2.625	5/8-18	1.625	16	8,516	.240
ALJM10H	ALJML10H	.6250	1.750	.750	.562	1.125	2.625	5/8-18	1.625	16	16,200	.268
ALJM12	ALJML12	.7500	1.750	.875	.687	1.312	2.875	3/4-16	1.750	14	13,319	.300
ALJM12H	ALJML12H	.7500	2.000	.875	.687	1.312	3.000	3/4-16	1.750	14	23,390	.300

MALE ROD END LOAD RATINGS BASED ON NO LUBRICATING FITTING. FOR LOAD RATINGS WITH LUBRICATOR, PLEASE CONTACT THE F.K. ENGINEERING DEPARTMENT.



MATERIALS

BALL	BODY
52100 STEEL HEAT TREATED HARD CHROME PLATED	ALUMINUM 7075-T6 HARD ANODIZED RED
RACE	
ALLOY STEEL, HEAT TREATED ZINC PLATED, CHROMATE TREATED	

FEMALE ROD ENDS		B DIA.	D DIA.	W WIDTH	T WIDTH	BALL DIA.	A LGTH	N THD.	C LGTH	E DIA.	F FLAT	a° MIS ANG.	ULT. STATIC RADIAL LOAD (lbs.)	APPROX. WEIGHT (lbs.)
RIGHT HAND PART NO.	LEFT HAND PART NO.	+0.015 -0.005	+0.010 -0.010	+0.000 -0.005	+0.015 -0.015	REF.	+0.015 -0.015	UNF 2B	+0.062 -0.031	+0.010 -0.010	+0.010 -0.010	REF.		
ALJF3	ALJFL3	.1900	.625	.312	.250	.437	1.062	10-32	.500	.406	.312	13	1,360	.022
ALJF4	ALJFL4	.2500	.750	.375	.281	.500	1.312	1/4-28	.687	.469	.375	16	2,592	.034
ALJF5	ALJFL5	.3125	.875	.437	.344	.625	1.375	5/16-24	.687	.500	.437	14	2,890	.050
ALJF6	ALJFL6	.3750	1.000	.500	.406	.719	1.625	3/8-24	.812	.687	.562	12	3,952	.088
ALJFB	ALJFLB	.5000	1.312	.625	.500	.937	2.125	1/2-20	1.062	.875	.750	12	7,006	.186

NOTES: FOR GREASE FITTINGS ADD "Z" TO SUFFIX. EXAMPLE: ALJF6Z
FOR STUDS ADD "Y" TO SUFFIX. EXAMPLE: ALJFBY
FOR TEFLON LINER ADD "T" TO SUFFIX. EXAMPLE: ALJM12T



RSM/RSMX/ALRSM

3-PIECE, EXTRA STRENGTH - HEAVY DUTY SHANK / PTFE LINERS AVAILABLE

BODY - LOW CARBON STEEL, ZINC PLATED- CHROMATE TREATED

MALE ROD ENDS		B DIA.	D DIA.	W WIDTH	T WIDTH	BALL DIA.	A LGTH	N THD.	C LGTH	a° MIS ANGLE	ULT. STATIC RADIAL LOAD (lbs.)	APPROX. WEIGHT (lbs.)
RIGHT HAND PART NO.	LEFT HAND PART NO.	+0.015 -0.005	+0.010 -0.010	+0.000 -0.005	+0.005 -0.005	REF.	+0.015 -0.015	UNF 3A	+0.062 -0.031	REF.		
RSM3	RSML3	.1900	.750	.312	.250	.437	1.562	1/4-28	1.000	10	2,170	.043
RSM4	RSML4	.2500	.875	.375	.281	.500	1.875	5/16-24	1.250	13	3,523	.072
RSM5	RSML5	.3125	1.000	.437	.344	.625	1.938	3/8-24	1.250	12	5,370	.112
RSM6	RSML6	.3750	1.125	.500	.406	.719	2.125	7/16-20	1.375	10	7,230	.160
RSM7	RSML7	.4375	1.312	.562	.437	.812	2.438	1/2-20	1.500	12	9,685	.249
RSM8	RSML8	.5000	1.500	.625	.500	.937	2.625	5/8-18	1.625	10	12,843	.382
RSM10	RSML10	.6250	1.750	.750	.562	1.125	2.875	3/4-16	1.750	13	16,613	.602

BODY - ALLOY STEEL, HEAT TREATED, ZINC PLATED- CHROMATE TREATED

MALE ROD ENDS		B DIA.	D DIA.	W WIDTH	T WIDTH	BALL DIA.	A LGTH	N THD.	C LGTH	a° MIS ANGLE	ULT. STATIC RADIAL LOAD (lbs.)	APPROX. WEIGHT (lbs.)
RIGHT HAND PART NO.	LEFT HAND PART NO.	+0.015 -0.005	+0.010 -0.010	+0.000 -0.005	+0.005 -0.005	REF.	+0.015 -0.015	UNF 3A	+0.062 -0.031	REF.		
RSMX4	RSMXL4	.2500	.875	.375	.281	.500	1.875	5/16-24	1.250	13	8,471	.072
RSMX5	RSMXL5	.3125	1.000	.437	.344	.625	1.938	3/8-24	1.250	12	13,012	.112
RSMX6	RSMXL6	.3750	1.125	.500	.406	.719	2.125	7/16-20	1.375	10	17,610	.160
RSMX7	RSMXL7	.4375	1.312	.562	.437	.812	2.438	1/2-20	1.500	12	23,470	.249
RSMX8	RSMXL8	.5000	1.500	.625	.500	.937	2.625	5/8-18	1.625	10	31,420	.382
RSMX10-8	RSMXL10-8	.5000	1.750	.750	.562	1.125	2.875	3/4-16	1.750	13	40,590	.602
RSMX10	RSMXL10	.6250	1.750	.750	.562	1.125	2.875	3/4-16	1.750	13	40,590	.602
RSMX12	RSMXL12	.7500	2.000	.875	.687	1.312	3.375	7/8-14	1.875	12	55,696	.918
RSMX14T**	RSMXL14T**	.8750	2.312	.875	.765	1.375	3.800	1-14	2.375	12	63,096	1.302

BODY - 7075-T6 ALUMINUM, HARD ANODIZED RED

MALE ROD ENDS		B DIA.	D DIA.	W WIDTH	T WIDTH	BALL DIA.	A LGTH	N THD.	C LGTH	a° MIS ANGLE	ULT. STATIC RADIAL LOAD (lbs.)	APPROX. WEIGHT (lbs.)
RIGHT HAND PART NO.	LEFT HAND PART NO.	+0.015 -0.005	+0.010 -0.010	+0.000 -0.005	+0.005 -0.005	REF.	+0.015 -0.015	UNF 3A	+0.062 -0.031	REF.		
ALRSM5	ALRSML5	.3125	1.000	.437	.344	.625	1.938	3/8-24	1.250	12	5,590	.060
ALRSM6	ALRSML6	.3750	1.125	.500	.406	.719	2.125	7/16-20	1.375	10	7,718	.088
ALRSM7	ALRSML7	.4375	1.312	.562	.437	.812	2.438	1/2-20	1.500	12	11,000	.121
ALRSM8	ALRSML8	.5000	1.500	.625	.500	.937	2.625	5/8-18	1.625	10	14,880	.200
ALRSM8-6	ALRSML8-6	.3750	1.500	.625	.500	.937	2.625	5/8-18	1.625	10	14,880	.200
ALRSM10	ALRSML10	.6250	1.750	.750	.562	1.125	2.875	3/4-16	1.750	13	19,240	.317
ALRSM10-8	ALRSML10-8	.5000	1.750	.750	.562	1.125	2.875	3/4-16	1.750	13	19,240	.317

* A trade mark of E.I. Dupont de Nemours & Co., Inc.

** Race is 17-4PH stainless steel, heat treated /

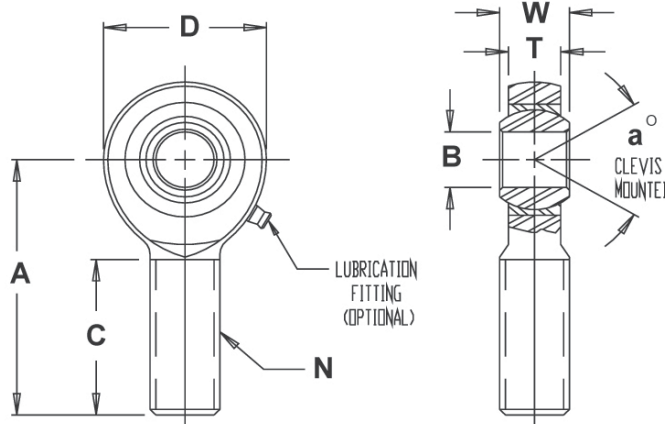
Ball is 440C stainless steel or 52100 steel (heat treated) - Manufacture's Option

NOTE: 1. FOR GREASE FITTINGS ADD "Z" TO SUFFIX.

EXAMPLE: RSML6Z

2. FOR *TEFLON LINER ADD "T" TO SUFFIX.

EXAMPLE: RSMX10T



MATERIALS

BALL
52100 STEEL
HEAT TREATED
HARD CHROME PLATED
RACE
STEEL ALLOY, HEAT TREATED
ZINC PLATED
CHROMATE TREATED

RSM

- 3-Piece extra strength rod end with heavy duty shank
- Ball is made of 52100 steel, heat treated and hard chrome plated
- Race is heat treated steel alloy, zinc plated and chromate treated
- Body is low carbon steel, heat treated, zinc plated and chromate treated
- Teflon® liners available



RSMX

- 3-Piece extra strength rod end with heavy duty shank
- Ball is made of 52100 steel, heat treated and hard chrome plated
- Race is heat treated steel alloy, zinc plated and chromate treated
- Body is alloy steel, heat treated, zinc plated and chromate treated
- Teflon® liners available



ALRSM

- 3-Piece extra strength rod end with heavy duty shank
- Ball is made of 52100 steel, heat treated and hard chrome plated
- Race is heat treated steel alloy, zinc plated and chromate treated
- Body is 7075-T6 aluminum with hard red anodized finish
- Teflon® liners available





HJMX-T/HRSMX-T/HIN-T

HIGH MISALIGNMENT SERIES - MALE ROD ENDS AND SPHERICAL BEARINGS - HEAVY DUTY

HJMX-T/HRSMX-T

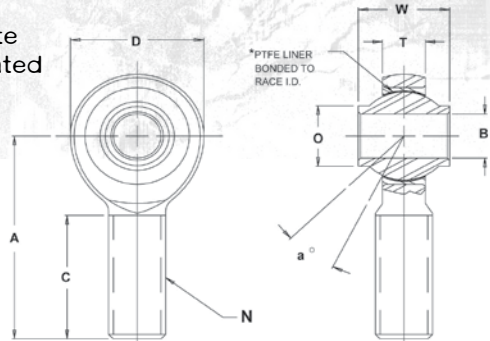
When a high misalignment angle is necessary, look to FK Rod Ends to provide some of the highest angles available on the market - up to 23 degrees!

- Heavy-duty high misalignment rod end
- Ball is 52100 heat treated steel with hard chrome plate
- Race composed of alloy steel, heat treated, zinc plated and chromate treated
- Body is 4340 alloy steel, heat treated, zinc plated and chromate treated
- Comes standard with a Teflon® fabric liner bonded to race I.D.



HIN-T

- Heavy-duty high misalignment spherical bearing
- Ball is 52100 heat treated steel with hard chrome plate
- Race composed of alloy steel, heat treated and oil coated
- Comes standard with a Teflon® fabric liner bonded to race I.D.

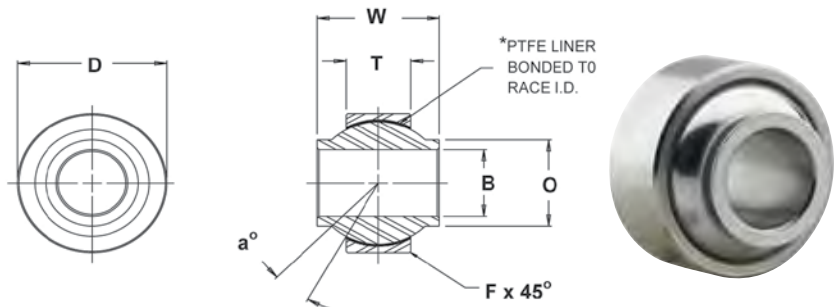


MALE ROD ENDS		B DIA.	D DIA.	W WIDTH	T WIDTH	BALL DIA.	A LGTH	N THD.	C LGTH	O DIA.	a° MIS. ANGLE	ULT. STATIC RADIAL LOAD (lbs)	APPROX. WEIGHT (lbs)
RIGHT HAND PART NO.	LEFT HAND PART NO.	+0.015 -0.005	+0.010 -0.010	+0.000 -0.005	+0.005 -0.005	REF.	+0.015 -0.015	UNF 3A	+0.031 -0.031	REF.	REF.		
HRSMX4T	HRSMXL4T	.2500	1.025	.593	.265	.593	1.938	3/8-24	1.187	.390	23	10,790	.12
HJMX6T	HJMXL6T	.3750	1.150	.813	.355	.781	2.125	3/8-24	1.281	.512	22	11,390	.12
HRSMX6T	HRSMXL6T	.3750	1.150	.813	.355	.781	2.125	7/16-20	1.281	.512	22	11,789	.15
HJMX7T	HJMXL7T	.4375	1.337	.875	.355	.875	2.438	7/16-20	1.468	.618	21	15,716	.23
HRSMX7T	HRSMXL7T	.4375	1.337	.875	.355	.875	2.438	1/2-20	1.468	.618	21	17,100	.24
HJMX8T	HJMXL8T	.5000	1.525	.937	.411	1.000	2.625	1/2-20	1.562	.730	19	23,703	.33
HRSMX8T	HRSMXL8T	.5000	1.525	.937	.411	1.000	2.625	5/8-18	1.562	.730	19	23,703	.39
HJMX10T	HJMXL10T	.6250	1.775	1.200	.577	1.250	2.875	5/8-18	1.687	.856	19	28,109	.57
HRSMX10T	HRSMXL10T	.6250	1.775	1.200	.577	1.250	2.875	3/4-16	1.687	.856	19	32,100	.60
HJMX12T	HJMXL12T	.7500	2.025	1.280	.630	1.375	3.375	3/4-16	2.000	.970	18	38,701	.82
HRSMX12T	HRSMXL12T	.7500	2.025	1.280	.630	1.375	3.375	7/8-14	2.000	.970	18	38,701	.89

* A trade mark of E.I. Dupont de Nemours & Co., Inc.

MATERIALS

BALL	BODY
52100 STEEL	4340 STEEL, HEAT TREATED
HEAT TREATED	ZINC PLATED
HARD CHROME PLATED	CHROMATE TREATED
RACE	LINER
STEEL ALLOY	*TEFLON FABRIC
ZINC PLATED	
CHROMATE TREATED	



BEARING PART NO.	B DIA.	D DIA.	W WIDTH	T WIDTH	O DIA.	BALL DIA.	F CHAMFER	a° MIS. ANGLE	ULT. STATIC RADIAL LOAD (lbs)	APPROX. WEIGHT (lbs)
	+0.015 -0.005	+0.000 -0.005	+0.000 -0.005	+0.005 -0.005	REF.	REF.	REF.	REF.		
HIN4T	.2500	.7400	.593	.255	.390	.593	.020	24	7,560	.040
HIN6T	.3750	.9060	.813	.345	.512	.781	.030	23	16,983	.068
HIN7T	.4375	1.0000	.875	.345	.618	.875	.030	22	19,023	.095
HIN8T	.5000	1.1250	.937	.401	.730	1.000	.030	20	25,275	.160
HIN10T	.6250	1.3750	1.200	.567	.856	1.250	.030	20	44,652	.245
HIN12T	.7500	1.5625	1.280	.620	.970	1.375	.035	18	53,716	.315

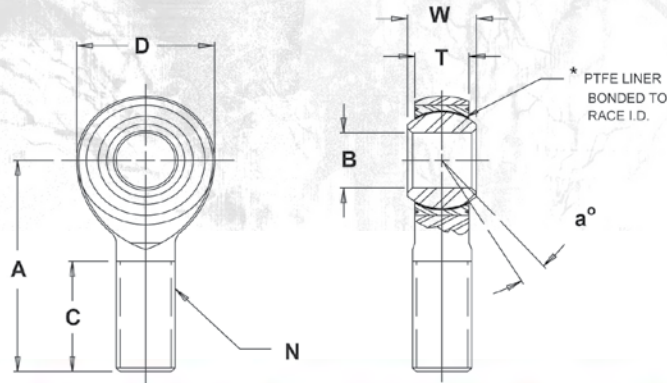
PMX-T/PMXL-T

3-PIECE PERFORMANCE RACING, STAINLESS STEEL RACE,
WEAR RESISTANT, SELF LUBRICATING



PMX-T/PMXL-T

- 3-Piece performance racing, wear resistant, self lubricating rod end
- Frequently used in high performance racing applications
- Ball is made of 440C stainless steel or 52100 steel heat treated R/C 56 min, with hard chrome plate*
- Race is 17-4PH CRES heat treated stainless steel
- Body is 4340 alloy steel, heat treated, zinc plated and chromate treated
- Comes standard with a Teflon® fabric liner bonded to race I.D.



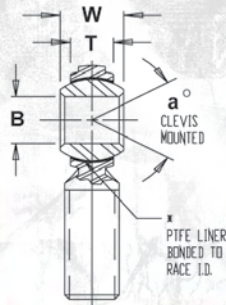
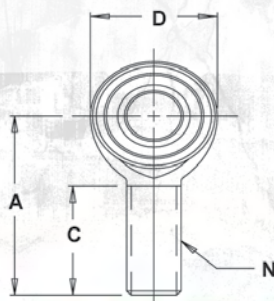
MALE ROD ENDS		B DIA.	D DIA.	W WIDTH	T WIDTH	BALL DIA.	A LGTH	N THD.	C LGTH	a° MIS ANGLE	ULT. STATIC RADIAL LOAD (lbs.)	APPROX. WEIGHT (lbs.)
RIGHT HAND PART NO.	LEFT HAND PART NO.	+0.015 -0.005	+0.010 -0.010	+0.000 -0.005	+0.005 -0.005	REF.	+0.010 -0.010	UNF 3A	+0.031 -0.031	REF.		
PMX5T	PMXL5T	.3125	.900	.437	.327	.593	1.875	5/16-24	1.187	14	8,302	.08
PMX8T	PMXL6T	.3750	1.025	.500	.416	.687	1.938	3/8-24	1.187	8	10,940	.13
PMX7T	PMXL7T	.4375	1.150	.562	.452	.781	2.125	7/16-20	1.281	10	14,052	.18
PMX8T	PMXL8T	.5000	1.337	.625	.515	.875	2.438	1/2-20	1.468	9	23,314	.27
PMX10T	PMXL10T	.6250	1.525	.750	.577	1.062	2.625	5/8-18	1.562	12	25,900	.42
PMX12T	PMXL12T	.7500	1.775	.875	.640	1.250	2.875	3/4-16	1.687	13	34,322	.63

* A trade mark of E.I. Dupont de Nemours & Co., Inc.

MATERIALS

BALL	BODY	RACE	LINER
440C STAINLESS STEEL OR 52100 STEEL HEAT TREATED R/C 56 MIN. HARD CHROME PLATED MANUFACTURER'S OPTION	4340 STEEL HEAT TREATED ZINC PLATED CHROMATE TREATED	17-4PH CRES STAINLESS STEEL HEAT TREATED	*TEFLON FABRIC

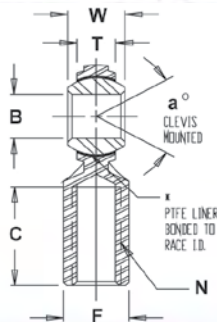
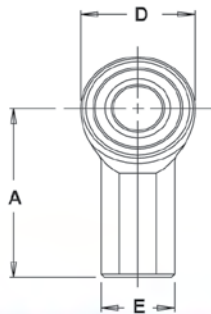




MATERIALS

BALL	BODY
440C STAINLESS STEEL HEAT TREATED	303 STAINLESS STEEL PASSIVATED
LINER	
*TEFLON FABRIC	

MALE ROD ENDS		B DIA.	D DIA.	W WIDTH	T WIDTH	BALL DIA.	A LGTH	N THD.	C LGTH	a° MIS. ANGLE	U.L.T. STATIC RADIAL LOAD (lbs.)	APPROX. WEIGHT (lbs.)
RIGHT HAND PART NO.	LEFT HAND PART NO.	+0.0025 -0.0005	+0.010 -0.010	+0.005 -0.005	REF.	REF.	+0.015 -0.015	UNF 3A	+0.062 -0.031	REF.		
SCM3T	SCML3T	.1900	.625	.312	.234	.437	1.250	10-32	.750	20	912	.03
SCM4T	SCML4T	.2500	.750	.375	.250	.500	1.562	1/4-28	1.000	27	1,370	.04
SCM5T	SCML5T	.3125	.875	.437	.312	.625	1.875	5/16-24	1.250	22	2,050	.07
SCM6T	SCML6T	.3750	1.000	.500	.359	.719	1.938	3/8-24	1.250	22	3,040	.11
SCM7T	SCML7T	.4375	1.125	.562	.406	.812	2.125	7/16-20	1.375	21	3,780	.15
SCM8T	SCML8T	.5000	1.312	.625	.453	.937	2.438	1/2-20	1.500	20	4,700	.24
SCM10T	SCML10T	.6250	1.500	.750	.484	1.125	2.625	5/8-18	1.625	26	5,860	.36
SCM12T	SCML12T	.7500	1.750	.875	.593	1.312	2.875	3/4-16	1.750	24	7,512	.57



MATERIALS

BALL	BODY
440C STAINLESS STEEL HEAT TREATED	303 STAINLESS STEEL PASSIVATED
LINER	
*TEFLON FABRIC	

FEMALE ROD ENDS		B DIA.	D DIA.	W WIDTH	T WIDTH	BALL DIA.	A LGTH	N THD.	C LGTH	E DIA.	F FLAT	a° MIS. ANG.	U.L.T. STATIC RADIAL LOAD (lbs.)	APPROX. WEIGHT (lbs.)
RIGHT HAND PART NO.	LEFT HAND PART NO.	+0.0025 -0.0005	+0.010 -0.010	+0.005 -0.005	REF.	REF.	+0.015 -0.015	UNF 2B	+0.062 -0.031	+0.010 -0.010	+0.010 -0.010	REF.		
SCF3T	SCFL3T	.1900	.625	.312	.234	.437	1.062	10-32	.500	.406	.312	20	930	.04
SCF4T	SCFL4T	.2500	.750	.375	.250	.500	1.312	1/4-28	.687	.468	.375	27	1,380	.05
SCF5T	SCFL5T	.3125	.875	.437	.312	.625	1.375	5/16-24	.687	.500	.437	22	2,100	.08
SCF6T	SCFL6T	.3750	1.000	.500	.359	.719	1.625	3/8-24	.812	.687	.562	22	3,080	.13
SCF7T	SCFL7T	.4375	1.125	.562	.406	.812	1.812	7/16-20	.937	.750	.625	21	3,790	.18
SCF8T	SCFL8T	.5000	1.312	.625	.453	.937	2.125	1/2-20	1.062	.875	.750	20	4,720	.29
SCF10T	SCFL10T	.6250	1.500	.750	.484	1.125	2.500	5/8-18	1.375	1.000	.875	26	5,870	.43
SCF12T	SCFL12T	.7500	1.750	.875	.593	1.312	2.875	3/4-16	1.562	1.125	1.000	24	7,520	.65

* A trade mark of E.I. Dupont de Nemours & Co., Inc.



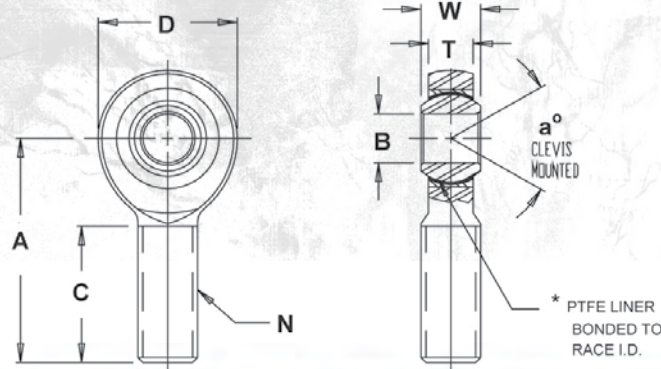
SJM-T/ SJF-T/SRSM-T

3-PIECE, PRECISION - STAINLESS STEEL, HIGH STRENGTH, SELF LUBRICATING

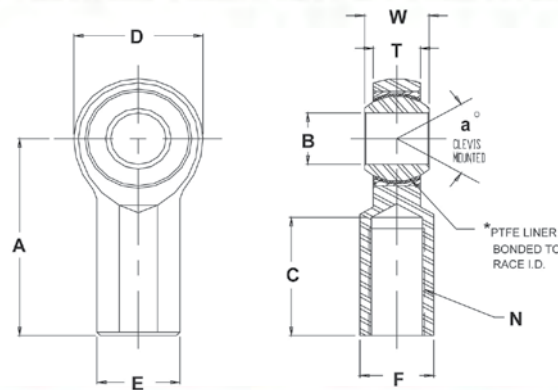


SJM-T/SJF-T/SRSM-T

- 3-Piece precision stainless steel, high strength, self lubricating rod end
- Ball is made of 440C CRES stainless steel and heat treated
- Race is 17-4PH CRES heat treated stainless steel
- Body composed of 17-4PH CRES heat treated stainless steel
- Comes standard with a Teflon® fabric liner bonded to race I.D.



MALE ROD ENDS		B DIA.	D DIA.	W WIDTH	T WIDTH	BALL DIA.	A LGTH	N THD.	C LGTH	α° MIS ANGLE	ULT. STATIC RADIAL LOAD (lbs.)	APPROX. WEIGHT (lbs.)
RIGHT HAND PART NO.	LEFT HAND PART NO.	+0.000 -0.005	+0.010 -0.010	+0.000 -0.005	+0.005 -0.005	REF.	+0.010 -0.010	UNF 3A	+0.031 -0.031	REF.		
SJM4T	SJML4T	.2500	.806	.437	.337	.531	1.562	1/4-28	.968	11	4,874	.072
SJM5T	SJML5T	.3125	.900	.437	.344	.625	1.875	5/16-24	1.187	11	7,196	.087
SJM6T	SJML6T	.3750	1.025	.500	.416	.687	1.938	3/8-24	1.187	11	8,580	.136
SRSM6T	SRSM6T	.3750	1.150	.500	.416	.687	2.125	7/16-20	1.375	11	17,610	.160
SJM7T	SJML7T	.4375	1.150	.562	.452	.781	2.125	7/16-20	1.281	13	12,000	.183
SRSM7T	SRSM7T	.4375	1.337	.562	.452	.781	2.438	1/2-20	1.500	13	23,470	.249
SJM8T	SJML8T	.5000	1.337	.625	.515	.875	2.438	1/2-20	1.468	11	19,520	.278
SRSM8T	SRSM8T	.5000	1.525	.625	.515	.875	2.625	5/8-18	1.625	11	33,172	.382
SJM10T	SJML10T	.6250	1.525	.750	.577	1.062	2.625	5/8-18	1.562	14	21,920	.424
SRSM10T	SRSM10T	.6250	1.775	.750	.577	1.062	2.875	3/4-16	1.750	14	40,507	.602
SJM12T	SJML12T	.7500	1.775	.875	.640	1.250	2.875	3/4-16	1.687	17	29,310	.639



FEMALE ROD ENDS		B DIA.	D DIA.	W WIDTH	T WIDTH	BALL DIA.	A LGTH	N THD.	C LGTH	E DIA.	F FLAT	α° MIS ANGLE	ULT. STATIC RADIAL LOAD (lbs.)	APPROX. WEIGHT (lbs.)
RIGHT HAND PART NO.	LEFT HAND PART NO.	+0.0015 -0.005	+0.010 -0.010	+0.000 -0.005	+0.005 -0.005	REF.	+0.015 -0.015	UNF 2B	+0.062 -0.031	+0.010 -0.010	+0.010 -0.010	REF.		
SJF4T	SJFL4T	.2500	.806	.375	.281	.500	1.312	1/4-28	.750	.469	.375	16	4,795	.059
SJF5T	SJFL5T	.3125	.900	.437	.344	.625	1.375	5/16-24	.750	.500	.437	14	5,929	.092
SJF6T	SJFL6T	.3750	1.025	.500	.406	.719	1.625	3/8-24	.937	.687	.562	12	7,363	.152
SJF7T	SJFL7T	.4375	1.150	.562	.437	.812	1.812	7/16-20	1.062	.750	.625	14	7,934	.198
SJF8T	SJFL8T	.5000	1.337	.625	.500	.937	2.125	1/2-20	1.187	.875	.750	12	12,527	.329
SJF10T	SJFL10T	.6250	1.525	.750	.562	1.125	2.500	5/8-18	1.500	1.000	.875	16	13,851	.477
SJF12T	SJFL12T	.7500	1.775	.875	.687	1.312	2.875	3/4-16	1.750	1.125	1.000	14	21,664	.723

MATERIALS

BALL	BODY	RACE	LINER
440C CRES STAINLESS STEEL HEAT TREATED	17-4PH CRES STAINLESS STEEL HEAT TREATED	17-4PH CRES STAINLESS STEEL HEAT TREATED	*TEFLON FABRIC

* A trade mark of E.I. DuPont de Nemours & Co., Inc.

COM

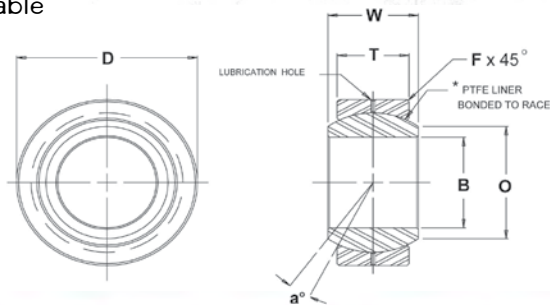
- Precision spherical bearing, narrow series
- Ball is 52100 heat treated steel with hard chrome plate
- Race is low carbon steel and oil coated
- Teflon® liners available

FKS

- Precision spherical bearing, narrow series
- Ball is 52100 heat treated steel with hard chrome plate
- Race is alloy steel, heat treated and oil coated
- Teflon® liners available

FKSSX

- Precision spherical bearing, narrow series
- Ball is made of 440C stainless steel and heat treated
- Race is 17-4PH heat treated stainless steel
- Teflon® liners available



BEARING PART NO.	B DIA.	D DIA.	W WIDTH	T WIDTH	O DIA.	BALL DIA.	F CHAMFER	α° MIS ANG.	ULT. STATIC RADIAL LOAD (LBS.)			APPROX. WEIGHT (lbs.)
	****	*****	*****	*****	REF.	REF.	REF.	REF.	COM	FKS	FKSSX	
3	.1900	.5625	.281	.218	.293	.406	.015	11	3,250	6,480	4,800	.014
4	.2500	.6562	.343	.250	.364	.500	.022	13.5	4,950	10,000	7,400	.022
5	.3125	.7500	.375	.281	.419	.562	.032	12	6,475	13,900	9,700	.030
6	.3750	.8125	.406	.312	.516	.656	.032	10	8,400	18,000	11,900	.038
7	.4375	.9062	.437	.343	.530	.687	.032	8	9,453	22,300	14,180	.047
8	.5000	1.0000	.500	.390	.600	.781	.032	9.5	13,250	26,900	17,900	.065
COM8-101	.5000	1.0000	1.000	.390	.600	.781	.032	9.5	13,250	-	-	.065
9	.5625	1.0937	.562	.437	.671	.875	.032	9.5	16,630	36,000	24,900	.086
10	.6250	1.1875	.625	.500	.739	.968	.032	8.5	21,280	48,000	31,900	.110
12	.7500	1.4375	.750	.593	.920	1.187	.044	9	31,920	78,000	47,850	.204
COM12T-3R**	.7500	1.4375	.750	.593	.920	1.187	.044	9	31,920	-	-	.204
14	.8750	1.5625	.875	.703	.980	1.312	.044	9.5	41,960	103,000	62,900	.263
16	1.0000	1.7500	1.000	.797	1.118	1.500	.044	10	55,200	125,000	82,800	.386
COMH16***	1.0000	2.0000	1.000	.781	1.360	1.687	.032	9	70,820	-	-	.553
COMH19***	1.1875	2.3750	1.187	.937	1.610	2.000	.032	8.5	100,730	-	-	.895
COMH20***	1.2500	2.3750	1.187	.937	1.610	2.000	.032	8.5	100,730	-	-	.895
COMH24***	1.5000	2.7500	1.375	1.094	1.860	2.312	.032	8.5	135,950	-	-	1.358
COMH28***	1.7500	3.1250	1.562	1.250	2.110	2.625	.044	8	176,370	-	-	1.948
COMH32***	2.0000	3.5000	1.750	1.375	2.360	2.937	.044	8.5	217,060	-	-	2.650

- * A trade mark of E.I. DuPont de Nemours & Co., Inc.
- ** BEARING COMES STANDARD WITH SNAP RING AND TEFLON LINER. CONTACT ENGINEERING FOR FURTHER INFORMATION.
- ***BORE TOLERANCE: +.0025/- .0005
- ****FKSSX SERIES BORE TOLERANCE "B": +.0000/- .0005
- *****COM SERIES "D" TOLERANCE IS: +.0000/- .0007

NOTE:
1. FOR *TEFLON LINER ADD "T" TO SUFFIX.
EXAMPLE: FKS10T

MATERIALS

	COM	FKS	FKSSX
RACE	LOW CARBON STEEL OIL COATED	ALLOY STEEL HEAT TREATED OIL COATED	17-4PH STAINLESS STEEL HEAT TREATED
BALL	52100 STEEL HEAT TREATED HARD CHROME PLATED	52100 STEEL HEAT TREATED HARD CHROME PLATED	440 C STAINLESS STEEL HEAT TREATED

WSSX-T/WSSX-TV

- Precision spherical bearing, wide series
- Ball is made of 440C stainless steel and heat treated
- Race is 17-4PH heat treated stainless steel
- Available plain or grooved
- Comes standard with a Teflon® fabric liner bonded to race I.D.

BEARING PART NO.		B DIA.	D DIA.	W WIDTH	T WIDTH	O SHOULDER DIA.	BALL DIA.	a° MIS. ANG.	LOAD RATINGS (lbs.)			APPROX. WEIGHT (lbs.)
PLAIN	GROOVED	+0.0000 -0.0005	+0.0000 -0.0005	+0.000 -0.002	+0.005 -0.005	REF.	REF.	MIN.	STATIC LIMIT		DYNAMIC OSCILLATING RADIAL LOAD	
									RADIAL (lbs.)	AXIAL (lbs.)		
WSSX3T	WSSX3TV	.1900	.6250	.437	.327	.301	.531	15	2,500	1,770	4,900	.031
WSSX4T	WSSX4TV	.2500	.6250	.437	.327	.301	.531	15	5,500	1,770	4,900	.031
WSSX5T	WSSX5TV	.3125	.6875	.437	.317	.360	.593	14	9,400	1,640	6,050	.035
WSSX6T	WSSX6TV	.3750	.8125	.500	.406	.466	.687	8	13,700	2,630	8,310	.060
WSSX7T	WSSX7TV	.4375	.9375	.562	.442	.537	.781	10	20,700	3,650	11,750	.080
WSSX8T	WSSX8TV	.5000	1.0000	.625	.505	.607	.875	9	21,400	4,970	14,950	.100
WSSX9T	WSSX9TV	.5625	1.1250	.687	.536	.721	1.000	10	26,600	5,370	18,100	.135
WSSX10T	WSSX10TV	.6250	1.1875	.750	.567	.747	1.062	12	29,000	6,130	20,250	.160
WSSX12T	WSSX12TV	.7500	1.3750	.875	.630	.845	1.250	13	37,000	7,730	26,200	.240
WSSX14T	WSSX14TV	.8750	1.6250	.875	.755	1.061	1.375	6	65,200	10,800	33,600	.350
WSSX16T	WSSX16TV	1.0000	2.1250	1.375	1.005	1.269	1.875	12	104,000	19,300	56,250	.970
WSSX24T**	WSSX24TV**	1.5000	2.9170	1.962	1.500	1.927	2.750	11	281,531	43,180	112,527	2.250

*A trade mark of E.I. Dupont de Nemours & Co., Inc.

** WSSX24T - "B" TOLERANCE IS +.0015/-0.0005 & "W" TOLERANCE IS +.000/-0.005

MATERIALS

BALL	RACE	LINER
440C STAINLESS STEEL HEAT TREATED	17-4 PH STAINLESS STEEL HEAT TREATED	*TEFLON FABRIC

NO LOAD BREAKAWAY TORQUE

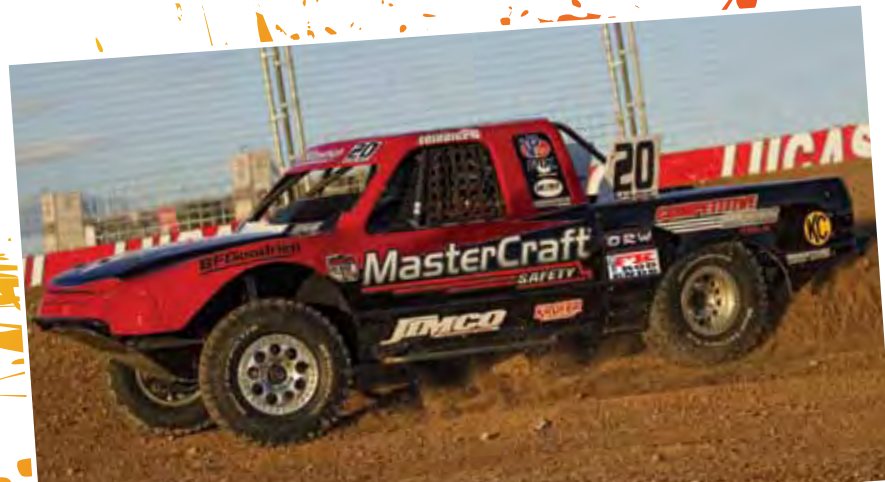
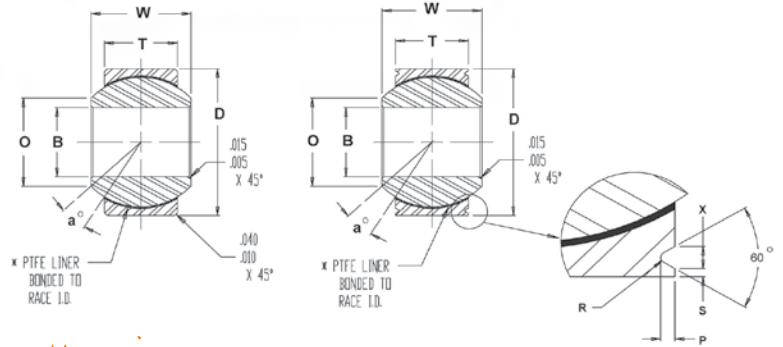
BORE SIZES	TORQUE
3	.5 to 5.0 in. lbs.
4 thru 12	1.0 to 5.0 in. lbs.
14 & 24	2.0 to 8.0 in. lbs.

STAKING GROOVE DATA

BORE SIZES	Σ	κ	R	P
	LAND	GROOVE	RAD.	DEPTH
3 thru 5	+0.000 -0.010	+0.000 -0.010	+0.000 -0.010	+0.000 -0.015
6 thru 10	.020	.045	.015	.030
12 thru 24	.030	.055	.020	.040

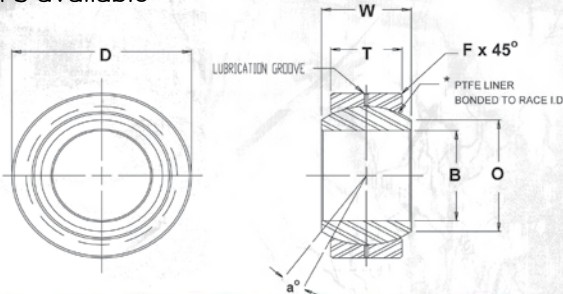
NOTES:

DIAMETER "B" AND "D" ARE CONCENTRIC WITHIN .005 T.L.R.



AIN

- Heavy duty precision spherical bearing
- Ball is 52100 heat treated steel (RC 56 min) with hard chrome plate
- Race is heat treated alloy steel and oil coated
- Teflon® liners available



RACE
ALLOY STEEL
HEAT TREATED
OIL COATED
BALL
52100 STEEL
Rc 56 MIN. HARD
HARD CHROME PLATED

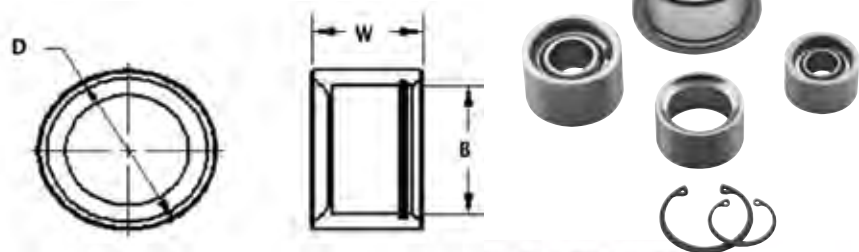
BEARING PART NO.	B DIA.	D DIA.	W WIDTH	T WIDTH	O DIA.	BALL DIA.	F CHAMFER	a' MIS ANG.	ULT. STATIC RADIAL LOAD (lbs.)	APPROX. WEIGHT (lbs.)
	+0.0015 -0.0005	+0.0000 -0.0007	+0.005 -0.005	+0.005 -0.005	REF.	REF.	REF.	REF.		
AIN3	.1900	.5312	.312	.250	.307	.437	.020	10.5	6,550	.016
AIN4	.2500	.6094	.375	.281	.331	.500	.020	14.5	8,427	.023
AIN5	.3125	.7500	.437	.344	.448	.625	.020	11.0	12,912	.039
AIN6	.3750	.8437	.500	.406	.516	.719	.020	9.5	17,512	.059
AIN7	.4375	1.0000	.562	.437	.587	.812	.020	11.0	21,290	.079
AIN8	.5000	1.0937	.625	.500	.699	.937	.020	9.5	28,110	.110
AIN10	.6250	1.3125	.750	.562	.839	1.125	.030	12.0	37,930	.165
AIN12	.7500	1.5000	.875	.687	.978	1.312	.030	10.0	48,675	.252
AIN14	.8750	1.5000	.875	.687	.978	1.312	.030	6.0	48,675	.248
AIN14T-770	.8750	1.6250	.875	.750	1.061	1.375	.035	6.0	58,650	.350
AIN16	1.0000	2.1250	1.375	1.000	1.275	1.875	.060	15.0	90,000	.788

All Parts are available with *Teflon Liners

* A trade mark of E.I. Dupont de Nemours & Co., Inc.

CP

Special high performance bearing cups. Made of 4130 Chrome Moly and includes a snap ring, these bearing cups make fabricating A-arms and chassis components a breeze. Available in seven sizes to fit most any race application.



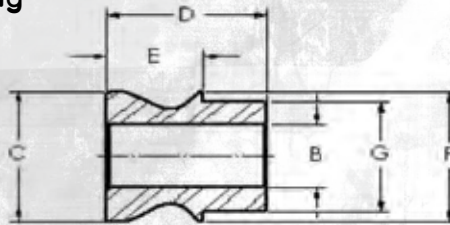
Precision manufactured from 4130 alloy steel and are complete with snap ring retainer. Fabrication of parts using these cups should be performed by a qualified welder. Cups come standard with a snap ring. Replacement snap rings are available.

PART NO.	B	W	D	BEARING CUPS WILL FIT THE FOLLOWING PART NUMBERS	SNAP RING PART NO.
CP8	1.0000	.750	1.250	COM8T, FKS8T, FKSSX8T	SR8
CP10	1.1875	.875	1.500	COM10T, FKS10T, FKSSX10T	SR10
CP12	1.4375	1.000	1.750	COM12T, FKS12T, FKSSX12T	SR12
CPW12	1.3750	1.000	1.750	WSSX12T	SRW12
CPW14	1.6250	1.250	2.000	AIN14T-770, WSSX14T	SRW14
CPW16	2.1250	1.500	2.625	AIN16T, WSSX16T	SRW16
CP20	2.375	1.500	2.875	COMH20T	SR20

High Misalignment Bushings/Center Finders



High Misalignment Bushing



NOTE:
This series will fit
AIN Series Spherical
Bearings
Excluding AIN14

PART NUMBER	B	C	D	E	F	G	BEARING SIZE
8-6HB	.3750	.645	.627	.342	.667	.499	8
10-8HB	.5000	.840	.900	.530	.795	.624	10
12-8HB	.5000	.995	.900	.475	.930	.749	12
12-10HB	.6250	.995	.900	.475	.930	.749	12
14-8HB	.5000	1.040	1.055	.625	1.035	.874	RSMX14T
14-10HB	.6250	1.050	1.055	.625	1.035	.874	JMX14T-770
14-12HB	.7500	1.050	1.242	.812	1.035	.874	KMX14
16-10HB	.6250	1.245	1.497	.817	1.225	.999	16
16-10HB-2	.6250	1.135	1.370	.690	1.225	.999	16
16-12HB	.7500	1.135	1.370	.690	1.225	.999	16

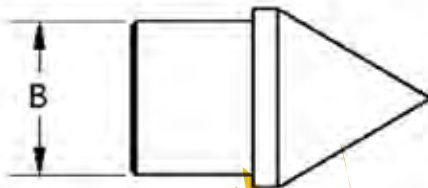
MATERIAL
17-4PH STAINLESS STEEL

NOTES:

1. ALL DIMENSIONS ARE IN INCHES.
2. MISALIGNMENT BUSHINGS INCREASE MISALIGNMENT ANGLE AND REDUCE HOLE SIZES IN ROD ENDS AND SPHERICAL BEARINGS.
3. ALL BUSHINGS ARE SOLD IN PAIRS.



Center Finders

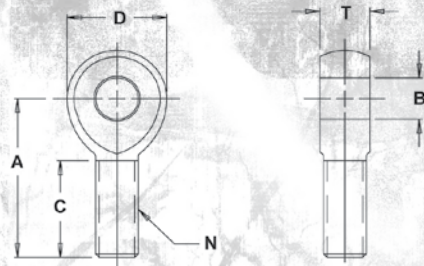


PART NUMBER	BEARING SIZE	B
CTR8	8	.500
CTR10	10	.625
CTR12	12	.750
CTR14	14	.875
CTR16	16	1.000

CENTER FINDERS ARE USED TO FIND THE LENGTH BETWEEN TWO CONNECTING RODS FOR EASE OF ASSEMBLY



Solid Rod Ends

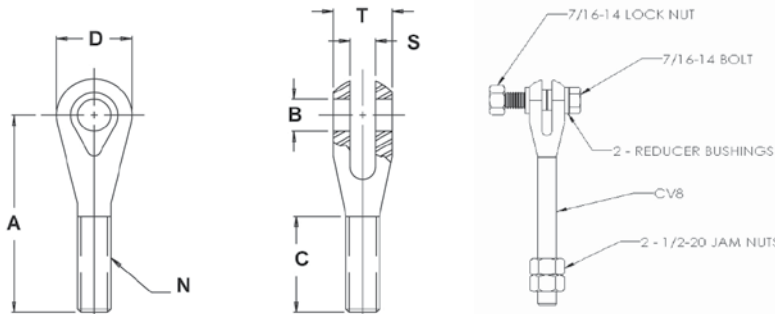


MATERIALS
LOW CARBON STEEL
ZINC PLATED



PART NO.	BORE x THD.	B DIA.	D DIA.	T WIDTH	A LGTH.	C LGTH.	N THD.	ULT. RADIAL STATIC LOAD (lbs.)
	REF.	+0025 -0005	+010 -010	+005 -005	+015 -015	+062 -031	UNF 3A	
RD1	5/8 x 5/8	.6250	1.500	.750	2.625	1.625	5/8-18	16,600
RD2	5/8 x 3/4	.6250	1.750	.875	2.875	1.750	3/4-16	18,500
RD3	3/4 x 3/4	.7500	1.750	.875	2.875	1.750	3/4-16	18,500
RD4	1/2 x 1/2	.5000	1.312	.625	2.437	1.500	1/2-20	12,100
RD5	1/2 x 3/4	.5000	1.750	.875	2.875	1.750	3/4-16	18,500
RD8	1/2 x 3/4	.5000	1.500	.750	2.625	1.625	3/4-16	18,500

Clevis



MATERIALS
LOW CARBON STEEL
ZINC PLATED, CHROMATE TREATED
NOTES:
1. 17-4 PH STAINLESS STEEL OFFERED
ON SIZES: 1 & 2
EXAMPLE: SCV1 & SCV2

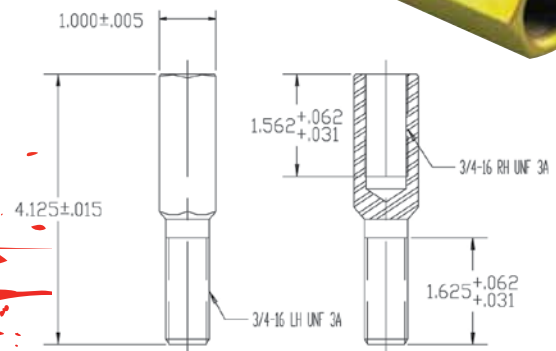


PART NO.	BORE x THD.	B DIA.	D DIA.	T WIDTH	A LGTH.	C LGTH.	S SLOT	N THD.
	REF.	+0025 -0005	+010 -010	+005 -005	+015 -015	+062 -031	+005 -005	UNF 3A
CV1	3/8 x 5/8	.3750	1.125	.825	3.375	2.000	.375	5/8-18
CV2	1/2 x 5/8	.5000	1.125	.825	3.375	2.000	.375	5/8-18
CV3	3/8 x 3/4	.3750	1.125	.825	3.375	2.000	.375	3/4-16
CV4	1/2 x 3/4	.5000	1.125	.825	3.375	2.000	.375	3/4-16
CV5	3/8 x 1/2	.3750	.875	.655	3.012	1.700	.250	1/2-20
CV8	9/16 x 1/2	.5625	1.125	.875	5.563	3.900	.250	1/2-20

PART NO.
CV8-ASM

Adjustable Ladder

Turn non-adjustable ladder bars into adjustable ladder bars. The Adjuster Ladder is made of low carbon steel and zinc plated for heavy duty performance.

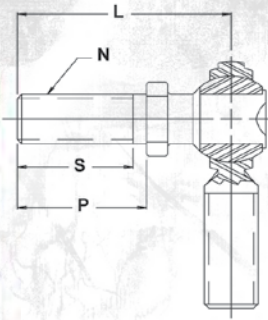


Studded Rod Ends/ Jam Nut/NAS Style Bolt



Studded Rod Ends

ROD END PART SIZE	L LGTH.	P LGTH.	S LGTH.	N THD.
3	+0.015 -0.015	REF.	MIN.	UNF 2A
4	1.031	.562	.500	1/4-28
5	1.219	.687	.593	5/16-24
6	1.562	.906	.812	3/8-24
7	1.750	1.062	.937	7/16-20
8	2.000	1.125	1.000	1/2-20
10	2.500	1.500	1.375	5/8-18
12	3.000	1.812	1.625	3/4-16



- NOTES:**
1. AVAILABLE ON ALL SERIES.
 2. STUD MATERIAL: LOW CARBON STEEL AND ALLOY STEEL (HEAT TREATED) - ZINC PLATED.
 3. STUD MISALIGNMENT APPROX. $\pm 25^\circ$ IN ANY DIRECTION.
 4. TO SPECIFY RIGHT HAND STUD, ADD SUFFIX "R" TO PART NUMBER.
EXAMPLE: CM5Y
 5. TO SPECIFY LEFT HAND STUD, ADD SUFFIX "YL" TO PART NUMBER.
EXAMPLE: CM5YL
 6. TO SPECIFY HEAT TREATED STUD, ADD SUFFIX "X" TO PART NUMBER.
EXAMPLE: CM5YX
 7. FOR LOAD RATINGS WITH STUDS, PLEASE CONTACT FK ENGINEERING DEPARTMENT.

Jam Nuts

INCH STEEL JAM NUTS

RIGHT HAND	LEFT HAND	THD. SIZE UNF-2B	HEX SIZE
SJNR03	SJNL03	10-32	3/8
SJNR04	SJNL04	1/4-28	7/16
SJNR05	SJNL05	5/16-24	1/2
SJNR06	SJNL06	3/8-24	9/16
SJNR07	SJNL07	7/16-20	11/16
SJNR08	SJNL08	1/2-20	3/4
SJNR10	SJNL10	5/8-18	15/16
SJNR10-1	SJNL10-1	5/8-18	3/4
SJNR12	SJNL12	3/4-16	1-1/8
SJNR14	SJNL14	7/8-14	1-9/32
SJNR16	SJNL16	1 1/4-12	1-13/16
SJNR16-1	SJNL16-1	1-14	1-3/8
SJNR16-2	SJNL16-2	1-12	1-3/8

INCH ALUMINUM JAM NUTS

RIGHT HAND	LEFT HAND	THD. SIZE UNF-2B	HEX SIZE
AJNR03	AJNL03	10-32	3/8
AJNR04	AJNL04	1/4-28	7/16
AJNR05	AJNL05	5/16-24	1/2
AJNR06	AJNL06	3/8-24	9/16
AJNR07	AJNL07	7/16-20	11/16
AJNR08	AJNL08	1/2-20	3/4
AJNR10	AJNL10	5/8-18	3/4
AJNR12	AJNL12	3/4-16	1-1/8

METRIC STEEL JAM NUTS

RIGHT HAND	LEFT HAND	THD. SIZE 6H	HEX SIZE
SJNR5M	SJNL5M	M5 X 0.8	3/8
SJNR6M	SJNL6M	M6 X 1.0	7/16
SJNR8M	SJNL8M	M8 X 1.25	1/2
SJNR10M	SJNL10M	M10 X 1.5	9/16
SJNR12M	SJNL12M	M12 X 1.75	11/16
SJNR14M	SJNL14M	M14 X 2.0	3/4
SJNR16M	SJNL16M	M16 X 2.0	15/16
SJNR18M	SJNL18M	M18 X 1.5	1 3/32
SJNR20M	SJNL20M	M20 X 1.5	1 3/32

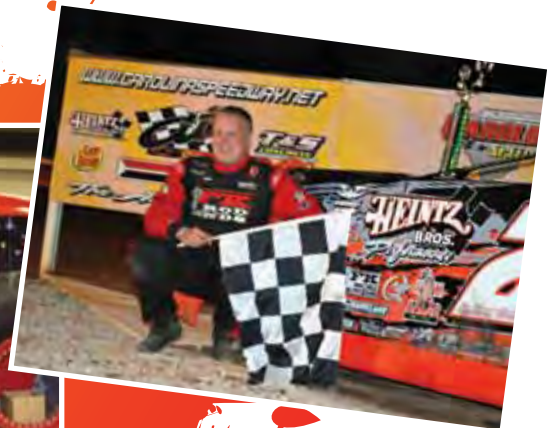
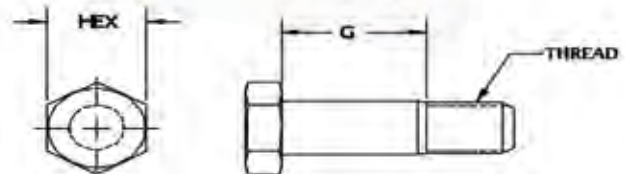


* HEX SIZE MAY VARY DEPENDING ON AVAILABILITY OF MATERIAL.



NAS Style Bolts

PART NO.	HEX SIZE	G GRIP	THREAD SIZE
	REF.	REF.	UNF-3A
6208-16	.750	1.100	1/2-20
6208-20	.750	1.250	1/2-20



Weldable Tube Ends

TUBE SIZE X WALL THICKNESS	10-32	1/4-28	5/16-24	3/8-24	7/16-20	1/2-20	5/8-18	3/4-16	7/8-14	1-14	1 1/4-12
3/8 X .058	1101										
1/2 X .058		1202	1203								
5/8 X .058			1303	1304	1305						
3/4 X .058			1403	1404	1405						
3/4 X .065			1503	1504	1505						
7/8 X .058				1604	1605	1606					
7/8 X .065				1704	1705	1706					
7/8 X .083				1804	1805	1806					
1" X .058				1904	1905	1906	1907				
1" X .065				2004	2005	2006	2007				
1" X .083				2104	2105	2106	2107				
1" X .095				2204	2205	2206	2207				
1 1/8 X .058						2306	2307				
1 1/8 X .065						2406	2407				
1 1/8 X .083						2506	2507	2508			
1 1/8 X .095						2606	2607	2608			
1 1/4 X .095							2707	2708			
1 1/4 X .120							2807	2808			
1 3/8 X .095							2907	2908			
1 3/8 X .120							3007	3008			
1 1/2 X .095							3057	3058			
1 1/2 X .120								3108	3109		
1 1/2 X .250								3208	3209		
1 3/4 X .120								3308	3309	3310	3311
1 3/4 X .250								3408	3409	3410	
2" X .250											3511

NOTE:

All tube ends are made from 4130 chromemoly. Left handed threaded parts have a distinctive mark around the outside diameter. F.K. Bearing makes no warranties, expressed or implied, as the suitability of our Tube Ends for any application. Tube Ends must be welded in place by a skilled welder, using good welding techniques.

Part numbers 2908L and 2708L are available with a hex. Please add H to end of part number. Example 2908L-H





WHEN RACING IS IN YOUR BLOOD...

*only the BEST hoses
and fittings will do!*

All hose ends may look alike, but Fragola Performance Systems has spent years researching, engineering, testing and re-testing to perfect their products. Made in America, Fragola Performance Systems hose ends are manufactured from aerospace quality aluminum and machined to mil spec tolerances making them the best on the market today.

Call toll-free (866) 337-2739 to find a dealer near you.

Fragola
Performance Systems 

866.337.2739

FragolaPerformanceSystems.com
sales@FragolaPerformanceSystems.com

MADE IN THE





FK Bearings, Inc.

865 West Queen Street

Southington, CT 06489

800-662-4003 860-276-0463 Fax

fkrodends.com sales@fkrodends.com